



The Avenue, London, W4 1HX

An immaculately presented lateral apartment on the ground floor of this attractive period property in an excellent location moments from Turnham Green Station with the added benefit of a private garden. The flat has been recently refurbished throughout with the accommodation of over 1000sqft comprising a fabulous 28'x15' dual aspect reception room with plenty of space for dining and living, a fully integrated modern kitchen, a lovely private garden with open aspect, a primary bedroom with ensuite shower room, fitted wardrobes and French doors onto the garden, second double bedroom with fitted wardrobes, main bathroom, study/cot room, utility room and entrance hall. Set within the Bedford Park conservation area, the apartment is conveniently located just a short stroll from Chiswick High Road's array of shops, cafés, and restaurants, whilst also providing excellent transport links, including Turnham Green Station (a 2-minute walk), local bus routes, and easy access to the A4/M4 for commuting to and from London. No onward chain.

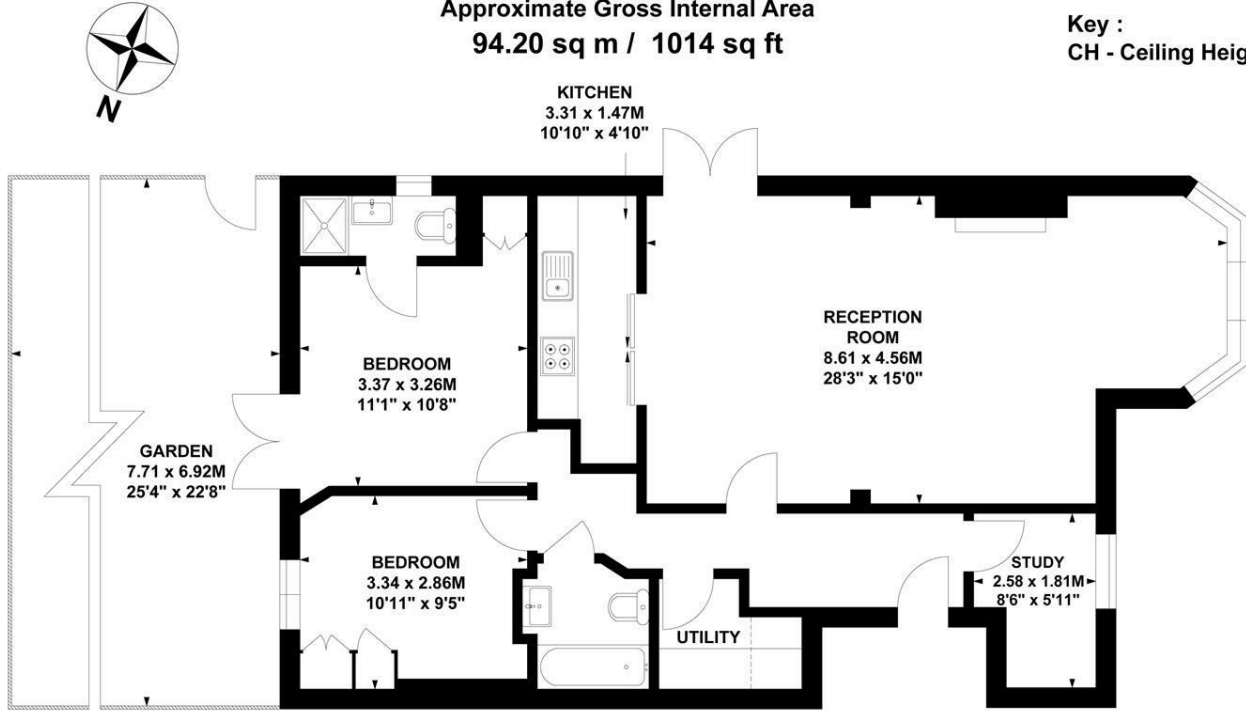
- Ground floor period conversion
- Sought after Bedford Park location
- Private garden
- Fabulous 28'x15' reception room
- Close to numerous amenities
- No onward chain

£1,095,000

The Lodge, W4

Approximate Gross Internal Area
94.20 sq m / 1014 sq ft

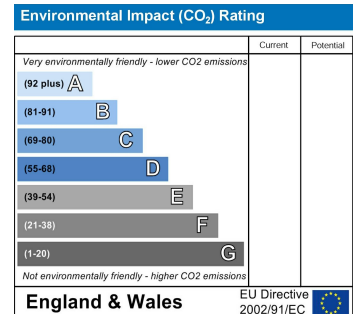
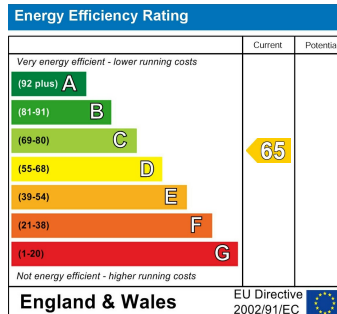
Key :
CH - Ceiling Height



Ground Floor

Not to scale, for guidance only and must not be relied upon as a statement of fact.
All measurements and areas are approximate only

Tenure - Leasehold
Lease length - 910 Years remaining
Ground Rent - Peppercorn
Service Charge - £2280 pa
Local Authority - Ealing
Council Tax - Band E



5-7 Turnham Green Terrace, Chiswick, London, W4 1RG

Tel 020 8747 8800

E-mail sales@whitmanandco.com

Website www.whitmanandco.com

MISREPRESENTATION ACT 1967

Whitman & Co. for themselves and for the vendors give notice that these particulars do not constitute any part of, an offer of contract. All statements contained in these particulars are made without responsibility on the part of Whitman & Co. or the vendor. None of the statements contained in these particulars is to be relied upon as statements or representations of facts. Any intending purchaser must satisfy himself by inspection or otherwise as to the correctness of each of the statements contained in these particulars. The vendor does not make or give, and neither Whitman & Co. or any person in their employment has any authority to make or give, any representation or warranty whatever in relation to the property.