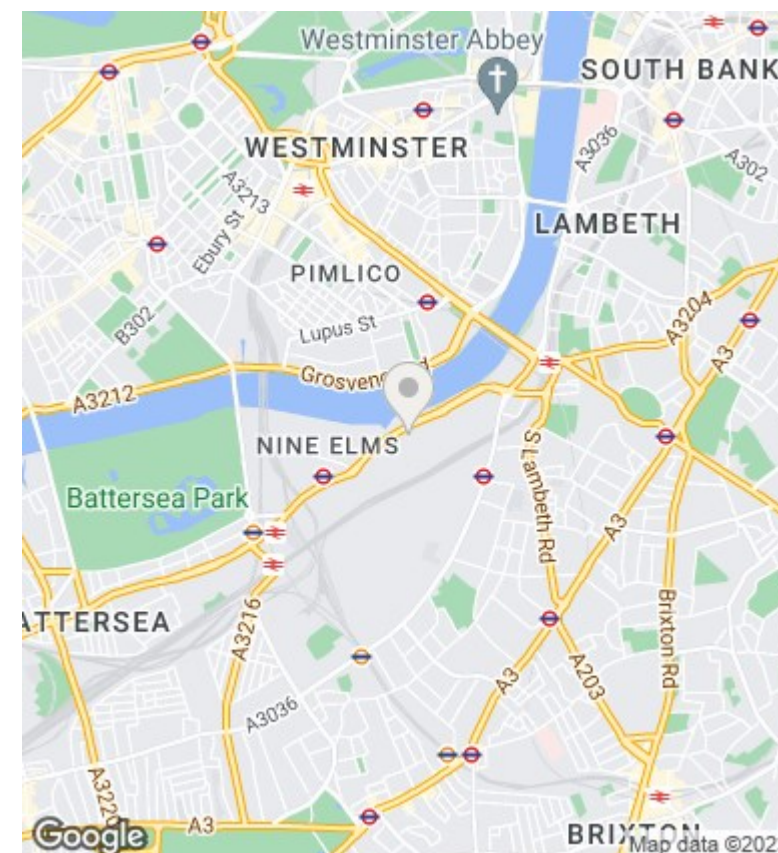
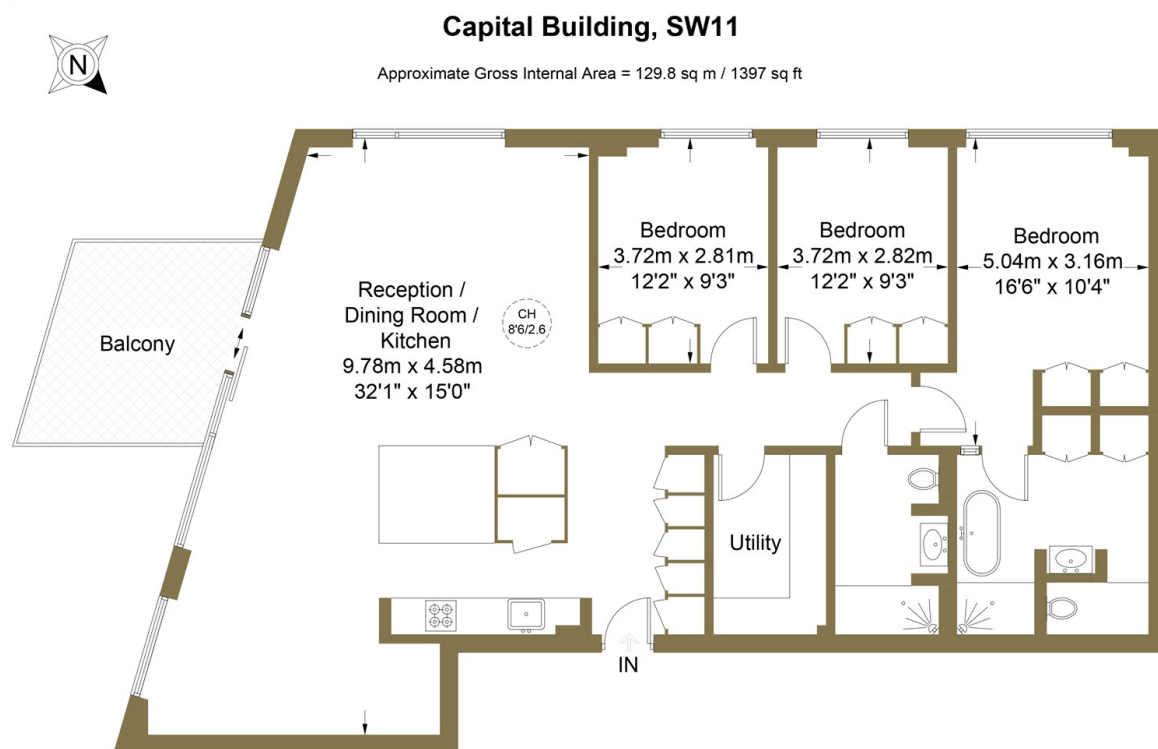




Capital Building, Embassy Gardens, London, SW11 SW11 7AR

£6,500 Per Month

- Fully Furnished
- 2 Bathrooms
- Gym & Fitness Center
- Walking distance to Nine Elms Station
- 24 hour concierge
- Available now
- Swimming Pool
- 3 Bedrooms
- Approx. 1397 sq foot
- Cinema (Screening room)



Energy Efficiency Rating		
	Current	Potential
Very energy efficient - lower running costs		
(92 plus) A		
(81-91) B		
(69-80) C		
(55-68) D		
(39-54) E		
(21-38) F		
(1-20) G		
Not energy efficient - higher running costs		
England & Wales	EU Directive 2002/91/EC	

Viewings

Viewings by arrangement only.
Call 02077225022 to make an appointment.

Council Tax Band

G

EPC Rating: