



Maberley Crescent, SE19 | Guide Price £285,000

02087029333

crystalpalace@pedderproperty.com

pedder
We live local



In General

- One bedroom
- Part of a Victorian lodge
- Separate kitchen
- No onward chain
- Close to Crystal Palace train station

In Detail

Guide Price £285,000-£300,000 A characterful one bedroom first floor period conversion tucked away on a quiet road nearby Crystal Palace station and the park.

This chain-free property forms part a Victorian lodge and is one of just four properties in the building. Brief highlights include a spacious entrance lobby, a separate kitchen, and a generous bathroom.

A 16ft reception has a large window allowing for plenty of natural light, and room for a dining table, whilst the bedroom is also well proportioned and allows for ample free-standing storage.

Maberley Crescent can be accessed from the popular Belvedere Road and is convenient for transport links to London Bridge, Victoria, and Canada Water.

Also, close proximity to Crystal Palace Park, amenities on Anerley Parade, and the vibrant Triangle at the centre of town.

No onward chain.

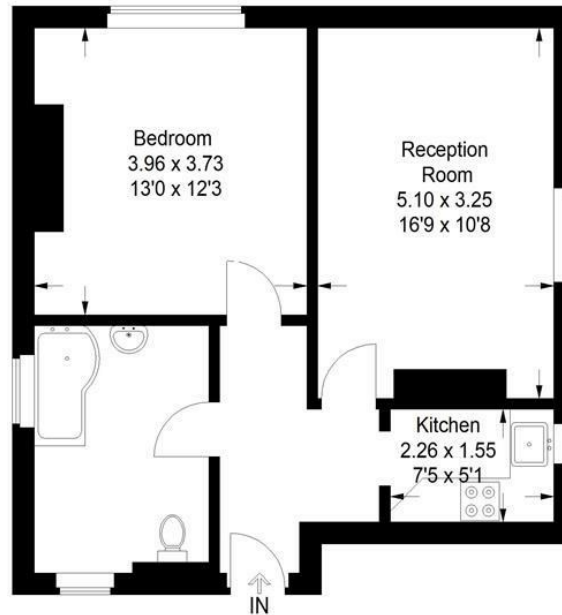
EPC: D | Council Tax: B | Lease: 95 years remaining | SC: £1,267.25 | GR: £250 | BI: Included in SC



Floorplan

Wallington Lodge, SE19

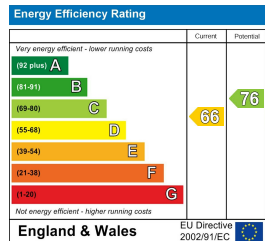
Approximate Gross Internal Area
51.5 sq m / 554 sq ft



First Floor

Copyright www.pedderproperty.com © 2023

These plans are for representation purposes only as defined by RICS - Code of Measuring Practice. Not drawn to Scale. Windows and door openings are approximate. Please check all dimensions, shapes and compass bearings before making any decisions reliant upon them.



Pedder Property Ltd trading as Pedder for themselves and for the vendor/landlord of this property whose agents they are, give notice that (1) these particulars do not constitute any part of an offer or contract, (2) all statements contained within these particulars are made without responsibility on the part of Pedder or the vendor/landlord, (3) whilst made in good faith, none of the statements contained within these particulars are to be relied upon as a statement of representation or fact, (4) any intending purchaser/tenant must satisfy him/herself by inspection or otherwise as to the correctness of each of the statements contained within these particulars, (5) the vendor/landlord does not make or give either Pedder or any person in their employment any authority to make or give representation or warranty whatsoever in relation to this property.