



## 6 Blenheim Drive, Swanton Morley

£395,000 Freehold

Introducing this exquisite newly built detached bungalow is located in a highly sought-after setting, offering breathtaking views of the surrounding open countryside fields. Immaculately presented, the property features premium fixtures and fittings, ensuring a living experience of both luxury and convenience. With its chain-free status, this exceptional home is ready for immediate occupation. Don't miss your chance to own this stunning property and enjoy the tranquil, picturesque lifestyle it offers.

Council Tax band: TBD

Tenure: Freehold

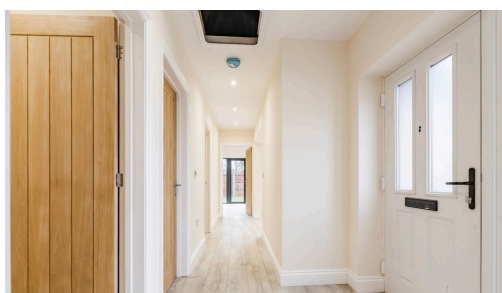
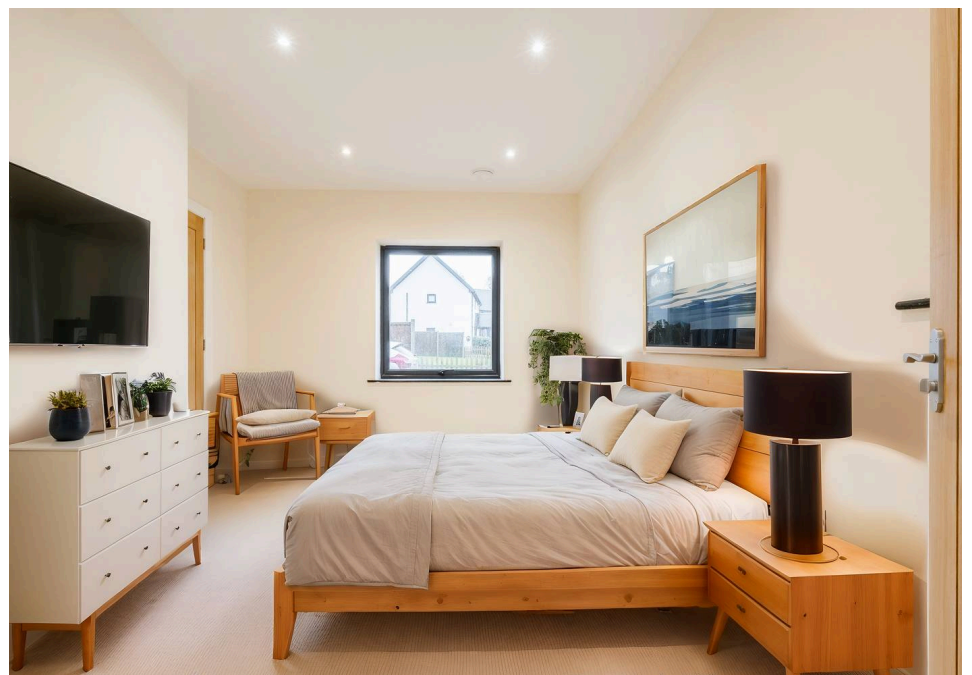
Introducing this exquisite newly built detached bungalow is located in a highly sought-after setting, offering breathtaking views of the surrounding open countryside fields. Immaculately presented, the property features premium fixtures and fittings, ensuring a living experience of both luxury and convenience. With its chain-free status, this exceptional home is ready for immediate occupation. Don't miss your chance to own this stunning property and enjoy the tranquil, picturesque lifestyle it offers.

## LOCATION

Swanton Morley is a village located in the county of Norfolk, England. It is situated approximately 4 miles northwest of the market town of Dereham and about 18 miles west of the city of Norwich. The village lies within the district of Breckland and is known for its rural character, with surrounding farmland and scenic landscapes. Swanton Morley has a rich history dating back to medieval times, and its name is believed to be derived from the Old English words "swanton" (meaning "swine" or "pig") and "Morley" (a reference to a



Introducing this exquisite newly built detached bungalow is located in a highly sought-after setting, offering breathtaking views of the surrounding open countryside fields. Immaculately presented, the property features premium fixtures and fittings, ensuring a living experience of both luxury and convenience. With its chain-free status, this exceptional home is ready for immediate occupation. Don't miss your chance to own this stunning property and enjoy the tranquil, picturesque lifestyle it offers.



Introducing this exquisite newly built detached bungalow is located in a highly sought-after setting, offering breathtaking views of the surrounding open countryside fields. Immaculately presented, the property features premium fixtures and fittings, ensuring a living experience of both luxury and convenience. With its chain-free status, this exceptional home is ready for immediate occupation. Don't miss your chance to own this stunning property and enjoy the tranquil, picturesque lifestyle it offers.

## LOCATION

Swanton Morley is a village located in the county of Norfolk, England. It is situated approximately 4 miles northwest of the market town of Dereham and about 18 miles west of the city of Norwich. The village lies within the district of Breckland and is known for its rural character, with surrounding farmland and scenic landscapes. Swanton Morley has a rich history dating back to medieval times, and its name is believed to be derived from the Old English words "swanton" (meaning "swine" or "pig") and "Morley" (a reference to a meadow or clearing). The village features a blend of traditional and modern housing, along with a church, a local pub, and other community amenities. It is well-connected by local roads, making it accessible to nearby towns and cities.

## BLLENHEIM DRIVE

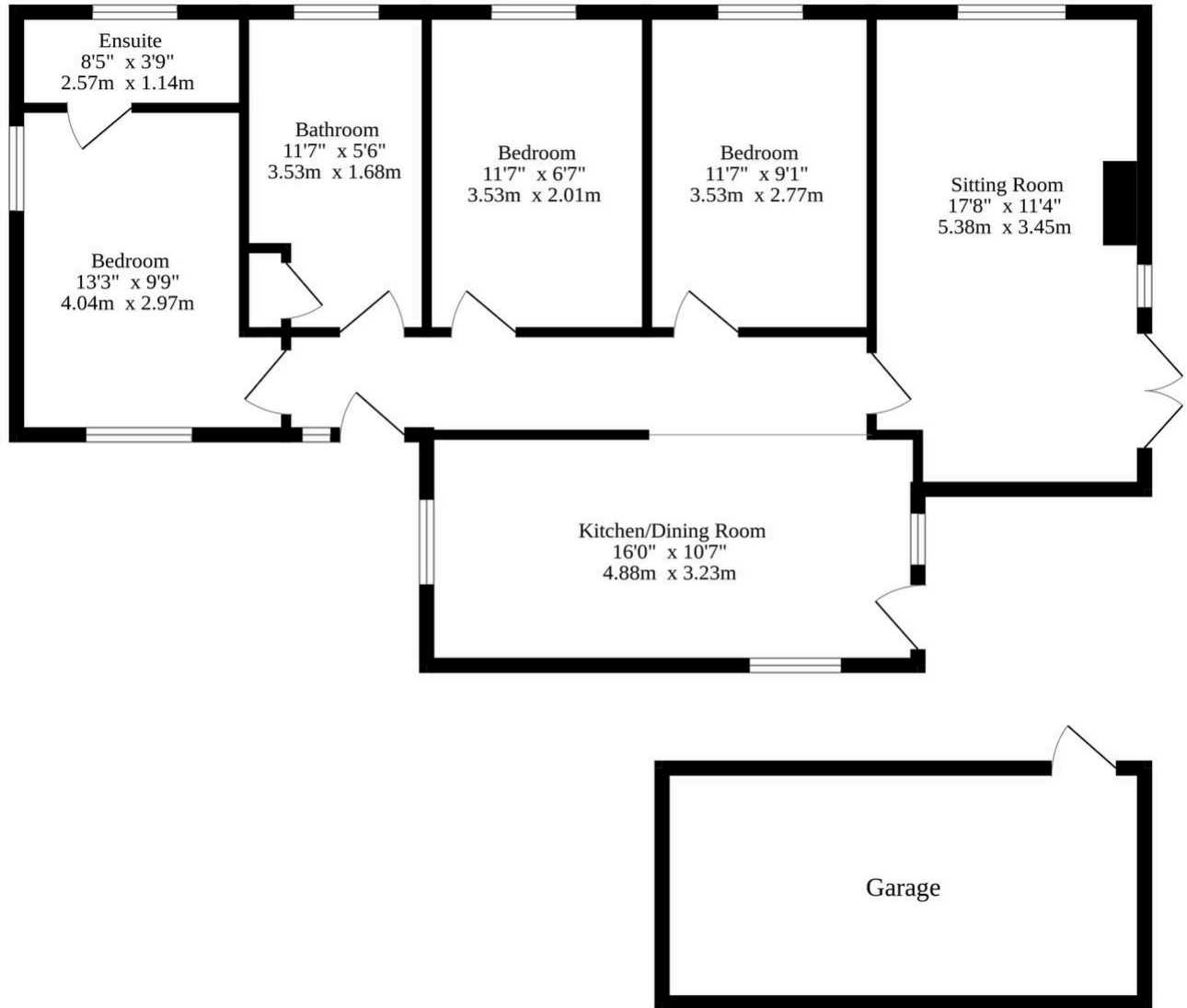
Welcome inside where you are greeted by an incredible open-plan kitchen/dining room that is as practical as it is stylish, showcasing a bespoke design that caters to modern living. With high-quality units and integrated appliances to enhance your cooking experience. The space is perfect for entertaining guests or enjoying family meals, with ample natural light flooding in to create a warm and inviting ambiance. The comfortable sitting room serves as the heart of the home, accentuated by a charming wood burner and French doors that lead out to the landscaped garden.

The bungalow features three double bedrooms, each thoughtfully designed to offer relaxation and privacy. The principal bedroom flaunts a private en-suite, adding a luxury yet convenient touch to your everyday routine, while the contemporary family bathroom accommodates the other bedrooms.

Outside, you'll discover a landscaped enclosed garden that offers endless possibilities for outdoor activities and enjoyment. Whether you enjoy gardening, hosting summer garden parties or simply relaxing in the afternoon sunshine,



## Ground Floor



Whilst every attempt has been made to ensure the accuracy of the floorplan contained here, measurements of doors, windows, rooms and any other items are approximate and no responsibility is taken for any error, omission or mis-statement. This plan is for illustrative purposes only and should be used as such by any prospective purchaser. The services, systems and appliances shown have not been tested and no guarantee as to their operability or efficiency can be given.  
Made with Metropix ©2024

You can include any text here. The text can be modified upon generating your brochure.

You can include any text here. The text can be modified upon generating your brochure.

