



Palmer & Partners



Palmer & Partners

Conifers, The Path, Great Bentley, CO7 8PN

Guide Price: £325,000

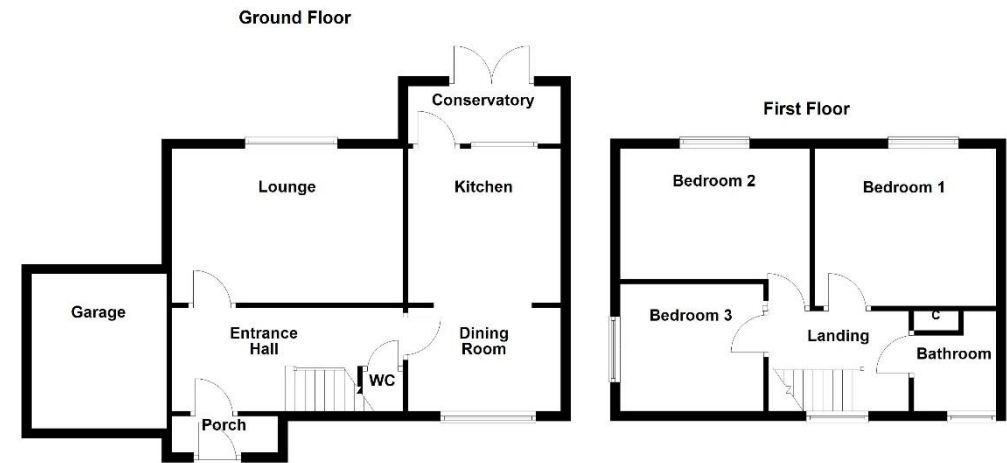
Conifers, The Path, Great Bentley, Colchester, Essex, CO7 8PN

GUIDE PRICE £325,000 - £350,000

This detached property is located in the picturesque village of Great Bentley and presents significant potential for development. Featuring three bedrooms, it includes two reception rooms, a ground floor cloakroom, and a family bathroom on the first floor. Additionally, there is a conservatory and off-road parking available. The house is positioned on a no-through road and overlooks the village Green.

Accommodation & Amenities

- Idyllic Village Location
- Three Bedrooms
- Detached House
- Two Reception Rooms
- Ground Floor Cloakroom
- First Floor Family Bathroom
- Conservatory
- Off Road Parking
- Situated On A No Through Road
- Overlooking Great Bentley Village Green
- Great Potential



Although every attempt has been made to ensure the accuracy of this floorplan measurements of doors, windows, rooms and any other items are approximate and no responsibility is taken for any error, omission or mis-statement. This plan is for illustrative purposes only.
Plan produced using PlanUp.

Measurements:

Entrance Hall

Lounge - 14' x 12'

Dining Room - 9'0 x 8'4

Kitchen - 12'2 x 10'9

Conservatory - 11'0 x 7'0

Ground Floor WC

Landing

Bedroom One - 12'0 x 11'0

Bedroom Two - 11'9 x 11'9

Bedroom Three - 9'2 x 7'9

Bathroom - 9'5 x 6'7

Garden



