



## DUNTSHILL ROAD, SW18 4QN

### Offers Over £525,000

We are delighted to present this larger-than-average ground floor period maisonette, offering exceptional living space and a private rear South facing garden. Boasting 667 square feet of well-arranged accommodation, this charming property is ideal for those seeking both comfort and style. The accommodation comprises of a spacious double bedroom, with built-in wardrobes providing ample storage and three sliding doors to open up the space. A reception room with plenty of additional storage, a smartly designed kitchen perfect for casual dining, a stylish and functional bathroom with underfloor heating and further 'hidden' storage, a utility area with extra storage and a versatile sun room/conservatory, adding valuable living space and a delightful 27ft garden, ideal for outdoor relaxation and entertaining. Situated in the heart of Earlsfield, this property enjoys close proximity to popular bars, restaurants, and bakeries. The convenience of an M&S Simply Food enhances your daily routine, and Earlsfield Mainline Station is just a short walk away, ensuring excellent connectivity. In addition, there is private secure bike storage in the front garden. Share of Freehold. EPC Rating: C. Council Tax Band: C. Please see the virtual tour provided: <https://my.matterport.com/show/?m=teGSKGH9rT2>.

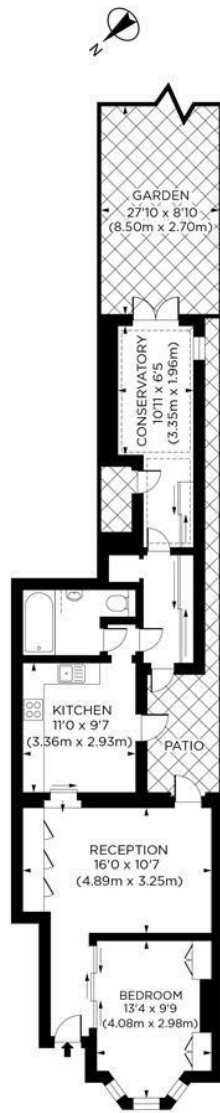


[www.maalems.co.uk](http://www.maalems.co.uk)

Earlsfield & Wandsworth Office  
344 Garratt Lane  
Earlsfield, London SW18 4EL  
T: 020 8875 9200  
[earlsfield@maalems.co.uk](mailto:earlsfield@maalems.co.uk)

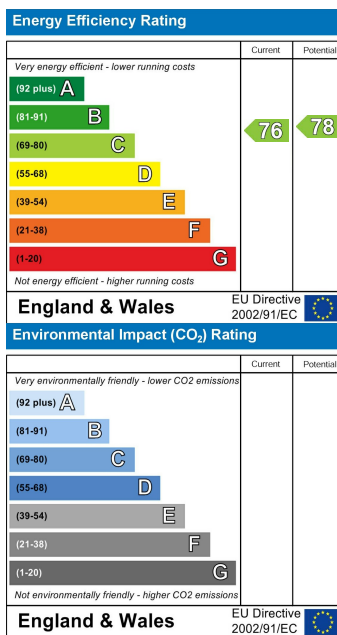
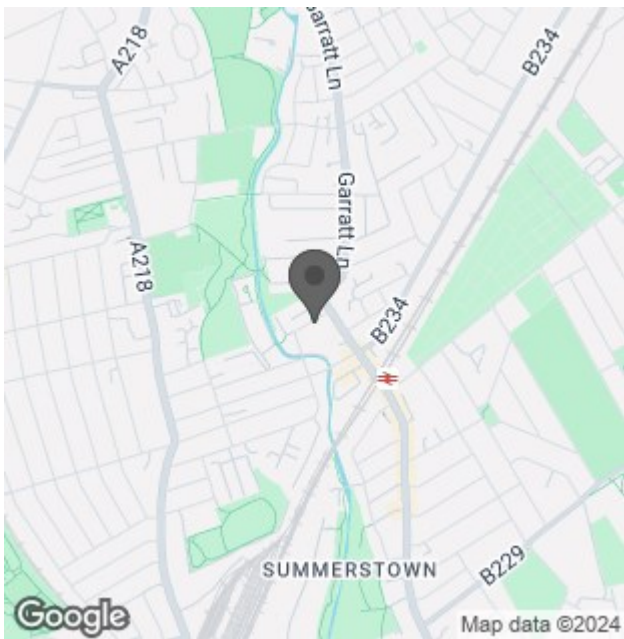
Registered in England & Wales No. 5585458





**GROUND FLOOR**

Duntshill Road, SW18  
 Gross Internal Area 667 sq ft/62 sq metres  
 ©photosandfloorplans.com



For an instant or face to face valuation, please scan the QR code:



[www.maalems.co.uk](http://www.maalems.co.uk)  
 Earlsfield & Wandsworth Office  
 344 Garratt Lane  
 Earlsfield, London SW18 4EL  
 T: 020 8875 9200  
 earlsfield@maalems.co.uk  
 Registered in England & Wales No. 5595458