



14 Mill Road, Mattishall

In Excess of £375,000

14 Mill Road

Mattishall, Dereham

This bungalow offers large proportions throughout, offering a spacious and comfortable living environment. Set in the peaceful village of Matishall, the property is perfectly designed for both family living and versatility. From the expansive sitting room with a cosy log burner to the generously sized bedrooms, every room offers ample space and a welcoming atmosphere. The flow between the living areas, including the dining room and conservatory, ensures ease of living, while the modern kitchen adds a sleek touch. The private garden, enclosed and not overlooked, further enhances the property's sense of privacy and space.

Council Tax band: C

Tenure: Freehold





14 Mill Road

Mattishall, Dereham

This bungalow offers large proportions throughout, offering a spacious and comfortable living environment. Set in the peaceful village of Matishall, the property is perfectly designed for both family living and versatility. From the expansive sitting room with a cosy log burner to the generously sized bedrooms, every room offers ample space and a welcoming atmosphere. The flow between the living areas, including the dining room and conservatory, ensures ease of living, while the modern kitchen adds a sleek touch. The private garden, enclosed and not overlooked, further enhances the property's sense of privacy and space.

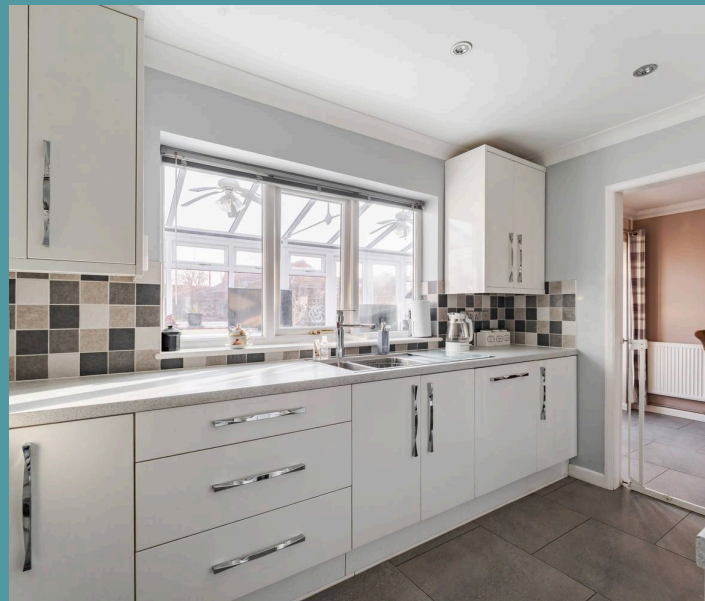
The Location

Situated in the sought-after village of Mattishall, this property benefits by being in walking distance of a school, local cafes, shops, a village hall and Church, as well as being easily accessible public transport to surrounding towns and villages.

Mattishall also boasts a Doctor's surgery and pharmacy, as well as lots of public footpath routes. Dereham is approximately 3 miles away whereby you will find more amenities, including schools for all ages, cinema and large leisure centre. The city of Norwich is located around 15 miles East of Mattishall and offers more shopping and eating opportunities.

Mill Road

This spacious bungalow, located in the peaceful village of Matishall, offers a wonderful combination of comfort and privacy. Approached



Ground Floor
1173 sq.ft. (109.0 sq.m.) approx.



Including Garage

TOTAL FLOOR AREA : 1173 sq.ft. (109.0 sq.m.) approx.

Whilst every attempt has been made to ensure the accuracy of the floorplan contained here, measurements of doors, windows, rooms and any other items are approximate and no responsibility is taken for any error, omission or mis-statement. This plan is for illustrative purposes only and should be used as such by any prospective purchaser. The services, systems and appliances shown have not been tested and no guarantee as to their operability or efficiency can be given.
Made with Metropix ©2025