



26 Strasbourg Way, Dereham

Offers in Region of £140,000

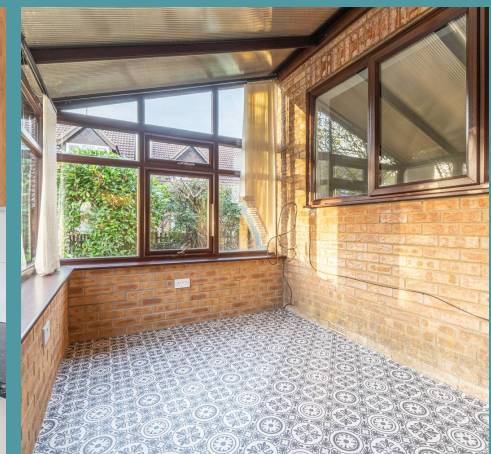
26 Strasbourg Way

Dereham, Dereham

This convenient one-bedroom house in Toftwood is an ideal choice for first-time buyers seeking a cosy home. It features a welcoming living room that seamlessly connects to a well-equipped kitchen and a versatile conservatory for extra storage. Upstairs, a comfortable double bedroom boasts an ensuite bathroom with a modern three-piece suite. With an enclosed front garden and allocated off-road parking, this property is perfectly located near local amenities and transport links.

The Location

Within a short distance to the town centre, this property is in a great location within Dereham. There are supermarkets and a pub close by, as well as having more amenities within the town centre, including more shops, pharmacies, doctor's surgery, dentists, cinema, bowling alley and leisure centre, as well as pubs and restaurants, and schools for all ages. There is easy access to the A47, and is on the edge of the town giving it a quieter feel whilst having amenities on your doorstep.





26 Strasbourg Way

Dereham, Dereham

Strasbourg Way

Discover this one-bedroom house in Toftwood, perfect for first-time buyers looking for a cosy and convenient home. The property features a welcoming living room that flows seamlessly into a well-appointed kitchen, complete with fitted units and space for essential appliances. The added benefit of a conservatory/porch creates a space to house additional belongings.

Upstairs, you'll find a comfortable double bedroom with ensuite bathroom offering a modern three-piece suite. With an easy and practical layout and homely touches, this property is designed for comfortable living.

Outside, the enclosed front garden offers pleasant views, while the allocated off-road parking space adds to the convenience. Situated in a friendly neighbourhood, this home is ideally positioned for local amenities and transport links.

Agents Note

Sold Freehold.

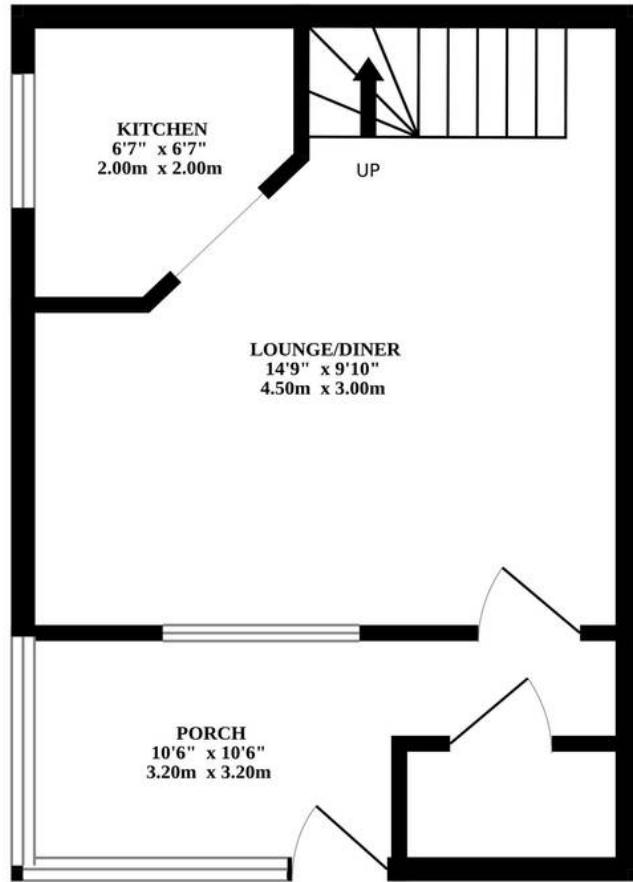
Maintenance: £235 p/a

Council Tax - A

New Heat Pump Installed



GROUND FLOOR



1ST FLOOR

