



A FOUR BEDROOM, TWO BATHROOM DETACHED FAMILY HOME

Crofters Road, Northwood, Middlesex HA6 3EB

ROBSONS

A FOUR BEDROOM, TWO BATHROOM DETACHED FAMILY HOME

Crofters Road, Northwood, Middlesex HA6 3EB

LIVING ROOM • DINING ROOM • STUDY • KITCHEN/BREAKFAST ROOM • UTILITY • FOUR BEDROOMS • TWO FAMILY BATHROOMS • 120FT REAR GARDEN • DRIVEWAY • GARAGE • NO UPPER CHAIN

Description

An opportunity to acquire this four bedroom, two bathroom detached family home, ideally located in the much sought after Eastbury Farm estate.

Built in the 1950's and later extended in the 1970's, the accommodation comprises an entrance hall with guest cloakroom, kitchen/breakfast room with utility, a spacious living room with double doors through to a separate dining room and a study with access to the garden and internal door to garage. To the first floor there are four double bedrooms, all with built-in cupboards, plus two separate family bathrooms. The interior could benefit from some modernisation and provides the perfect blank canvas to create a stunning family home.





Description continued..

Outside, the established rear garden extends to approximately 120 feet in length and benefits from a paved patio seating area, overlooking the lawn and an abundance of attractive mature shrubs and flowerbeds. The front garden has a driveway providing off street parking for two vehicles and access to the garage.

Location

Nearby Northwood and Moor Park provide a range of shopping facilities, supermarket, restaurants and the Metropolitan Line Station providing access to Baker Street and the city beyond. The area has a range of both private and state schools. Places of worship and recreational facilities are also well catered for in the surrounding area and motorway links to M25 and M1 are nearby.

Additional Information

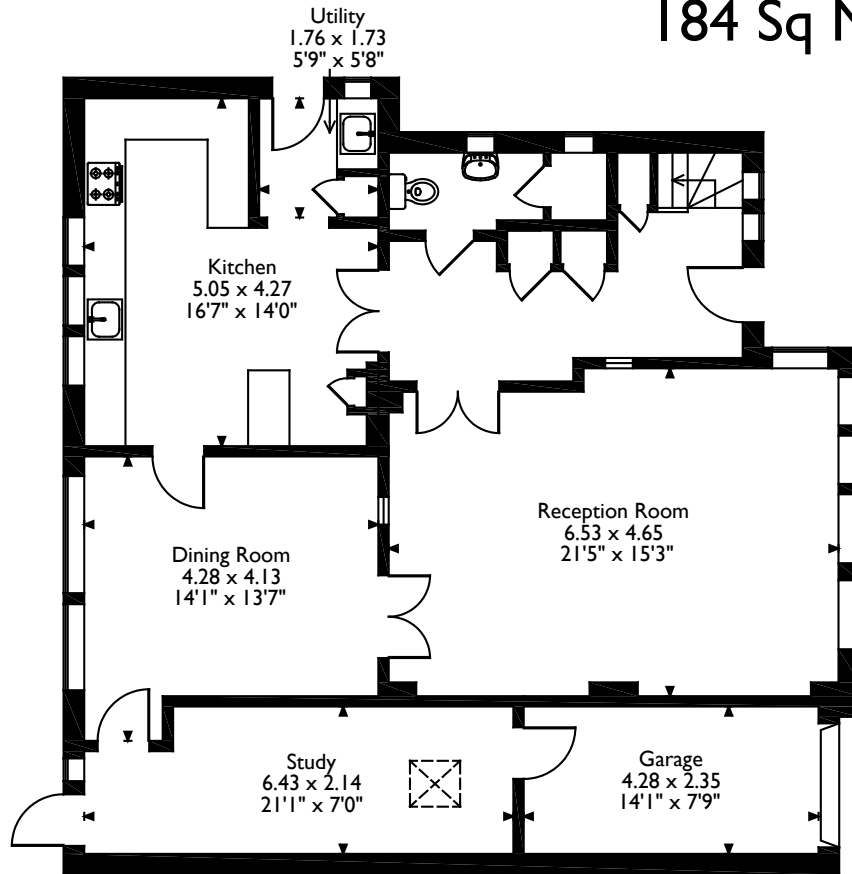
Tenure: Freehold
Council: Three Rivers District Council
Council Tax Band: G
Energy Efficiency Rating Band:



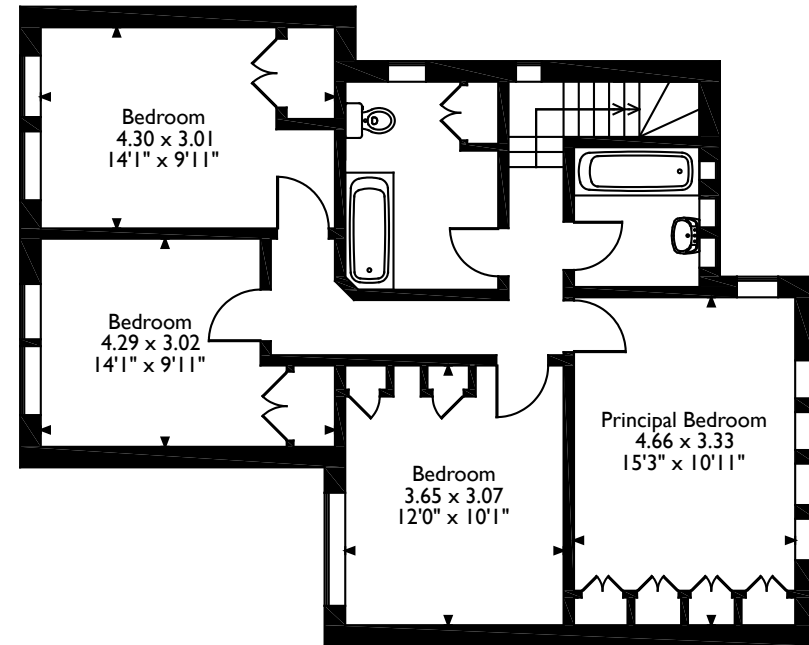
Crofters Road, Northwood, Middlesex

Approximate Gross Internal Area

184 Sq M/1981 Sq Ft



Ground Floor



First Floor

Please note that the location of doors, windows and other items are approximate and this floorplan is to be used for illustrative purposes only. Unauthorized reproduction is prohibited.

ROBSONS

The Estate Office, North Approach, Moor Park, Middlesex HA6 2JQ

Tel: 01923 820622 moorpark@robsonswb.com

www.robsonswb.com

Important notice: Robsons, their clients and any joint agents give notice that 1: They are not authorised to make or give any representations or warranties in relation to the property either here or elsewhere, either on their own behalf or on behalf of their client or otherwise. They assume no responsibility for any statement that may be made in these particulars. These particulars do not form part of any offer or contract and must not be relied upon as statements or representations of fact. 2: Any areas, measurements or distances are approximate. Plot sizes and dimensions are taken from Promap and are approximate. The text, photographs and plans are for guidance only and are not necessarily comprehensive. It should not be assumed that the property has all necessary planning, building regulation or other consents and Robsons have not tested any services, equipment or facilities. Purchasers must satisfy themselves by inspection or otherwise.