



The Meadows, Bacton Road, Alder Country Park
£80,000

The Meadows, Bacton Road

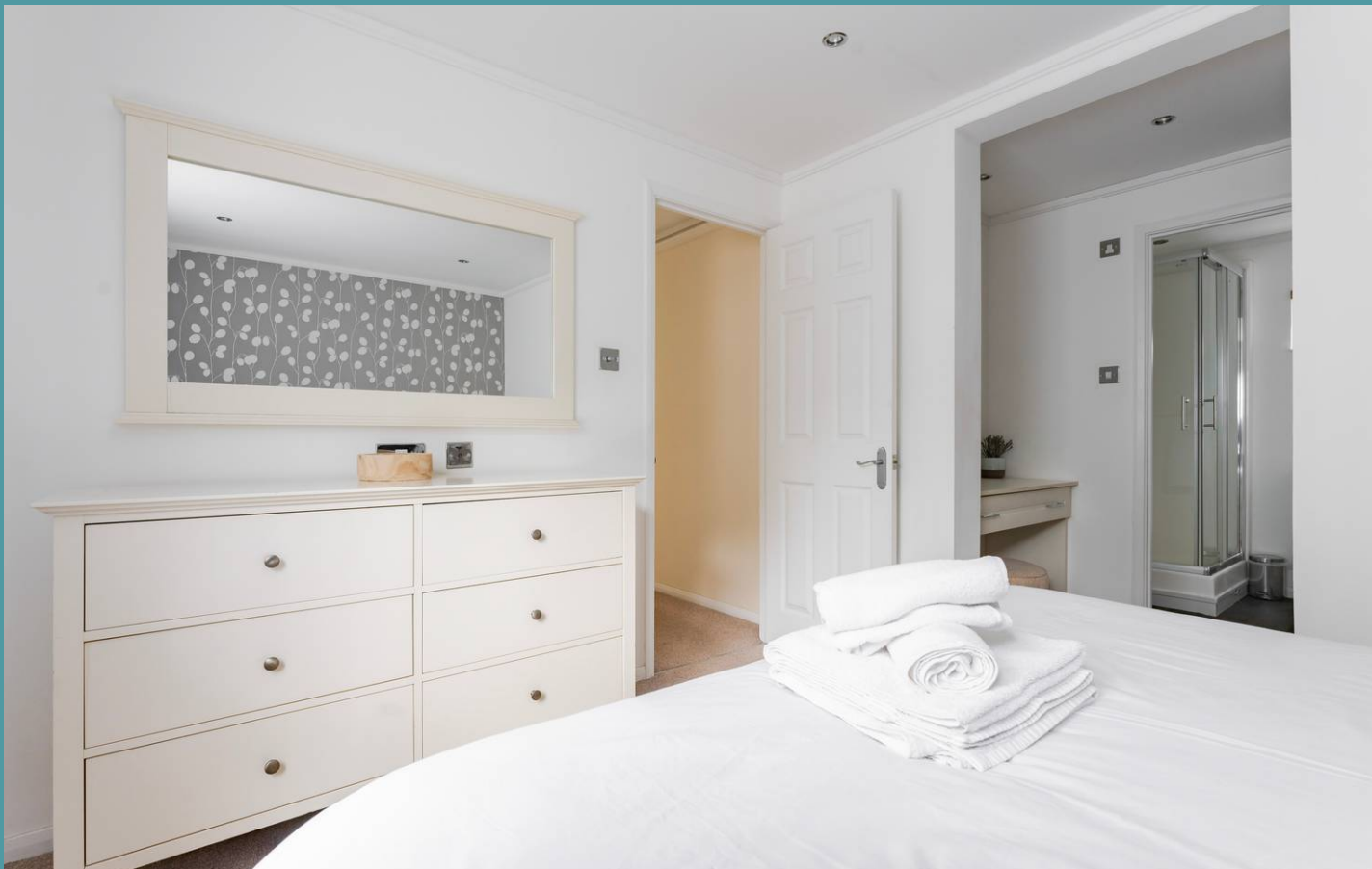
Alder Country Park, North Walsham

Welcome to this well-presented holiday let, where modern living seamlessly blends with comfort and style. The open-plan kitchen/living/dining area is adorned with contemporary furniture and features a well-equipped kitchen and utility with built-in appliances and a kitchen island, perfect for entertaining guests. The space is flooded with natural light, thanks to double doors leading to a balcony deck complete with a hot tub and BBQ area. Two generously sized bedrooms offer ample living space, with the main bedroom featuring an en-suite and walk-in wardrobe for added luxury. Additional amenities include allocated parking, communal green spaces, and double-glazed windows throughout, ensuring a bright and inviting atmosphere.

The Location

Located in the village of North Walsham, Bacton Road offers countryside living with modern conveniences. North Walsham is a charming market town with a rich history. It features a variety of local amenities, including traditional markets, independent shops, and cozy cafes. The town is home to St. Nicholas Church. Surrounded by natural beauty and outdoor recreational opportunities, this peaceful address provides easy access to local amenities, schools, and healthcare facilities making it an ideal place for families. The nearby Norfolk Broads and the stunning beaches of the Norfolk Coastline are perfect for weekend getaways and outdoor adventures.





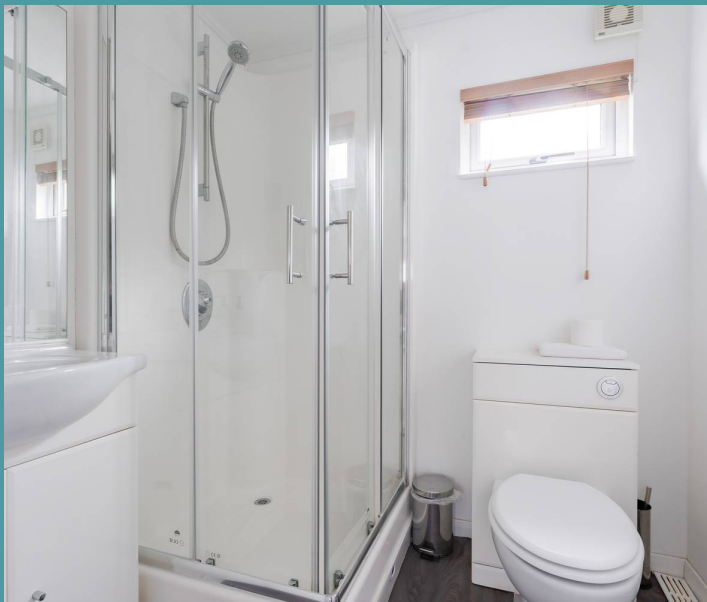
The Meadows, Bacton Road

Alder Country Park, North Walsham

The Meadows, Bacton Road

Welcome to this beautifully presented holiday let, where modern living meets comfort and style. Upon entering, you are greeted by an entrance hall featuring ample storage, setting the tone for the rest of the home. The open-plan kitchen/living/dining area is beautifully decorated with modern furniture and showcases the best fixtures, making it perfect for hosting guests.

The contemporary kitchen boasts built-in cupboards, integrated appliances, and a convenient kitchen island, complemented by a utility room that provides additional storage and laundry facilities.



Ample storage and countertop space ensure a functional flow, while the generously sized lounge area, featuring carpet flooring, creates a cosy ambiance. Two sets of double doors lead out to the balcony decking, flooding the space with natural light and offering seamless indoor-outdoor flow. This outdoor area is complete with a beautiful hot tub and BBQ, making it ideal for entertaining.



The Meadows, Bacton Road

Alder Country Park, North Walsham

This property includes two well-sized bedrooms that provide ample living space for guests. Each bedroom is thoughtfully designed with built-in cupboards for extra storage. The main bedroom is a standout feature, boasting an en-suite and a walk-in wardrobe, adding a touch of luxury to everyday living. The family bathroom offers a bathtub with a shower head and a half-glass panel, while the en-suite bathroom features a step-in shower, catering to the needs of both relaxation and convenience.

Guests will also enjoy the added benefit of one allocated parking spaces, ensuring convenience. The outside communal green spaces provide an inviting environment for relaxation and strolls. With all windows double glazed and lots of light throughout.

Agents Note

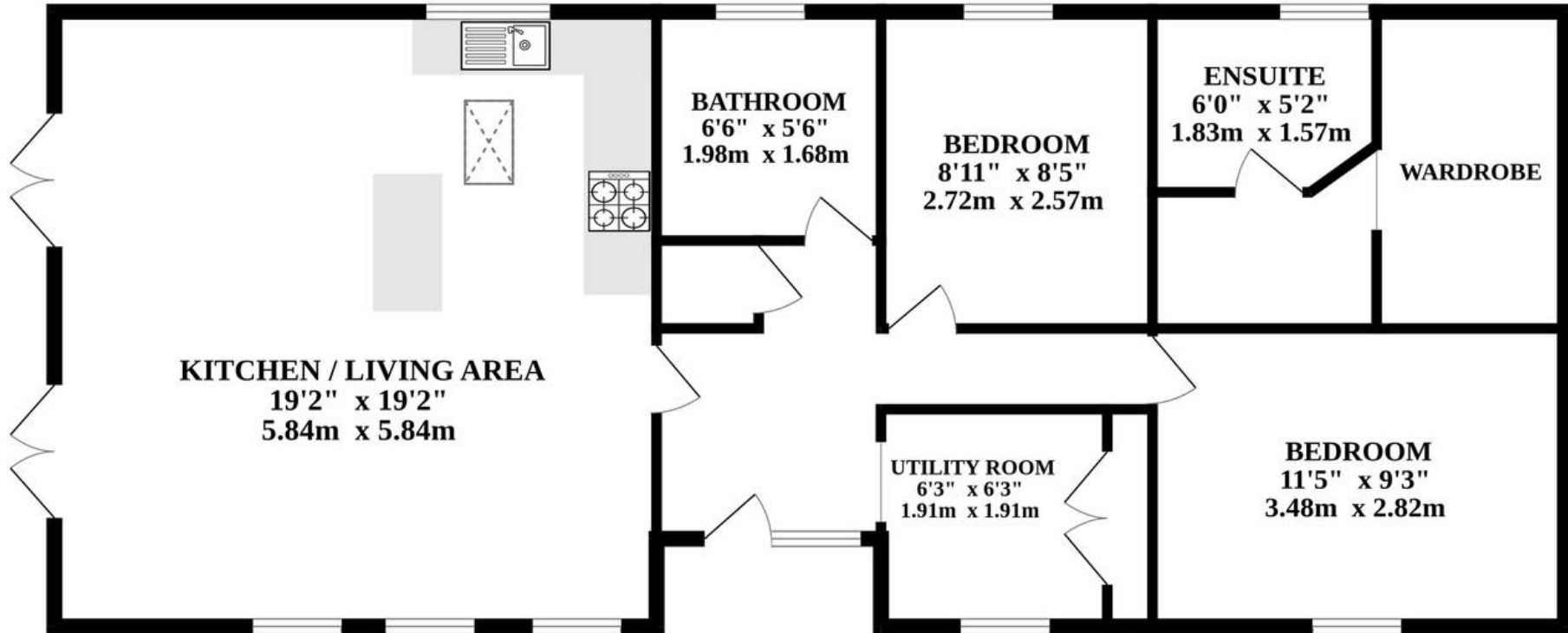
Sold Leasehold, connected to all mains services.

£8000p/a

Holiday Let Not Residential



GROUND FLOOR



Whilst every attempt has been made to ensure the accuracy of the floorplan contained here, measurements of doors, windows, rooms and any other items are approximate and no responsibility is taken for any error, omission or mis-statement. This plan is for illustrative purposes only and should be used as such by any prospective purchaser. The services, systems and appliances shown have not been tested and no guarantee as to their operability or efficiency can be given.
Made with Metropix ©2024