

The Courtyard, Gowan Avenue, SW6

Fulham, London

 LAWSONRUTTER





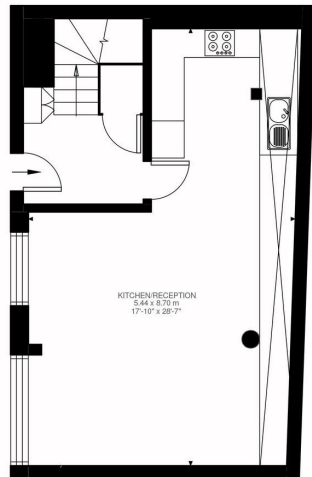
The Courtyard, Gowan Avenue
London SW6

£750,000
Freehold

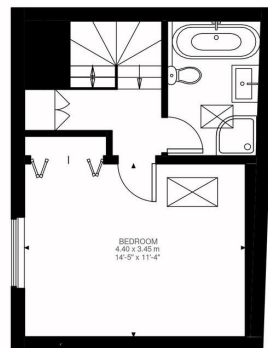


Tucked away within a secluded and private development with direct access from the ever popular and sought after Gowan Avenue. This is a delightful one bedroom house arranged over two floors providing very bright accommodation including a large open plan kitchen, living and dining room. Upstairs comprises a good sized double bedroom and bathroom including a separate shower.

The house benefits from secure gated access and allocated parking space the upkeep of which is covered by a modest service charge. The many shops, bars, and restaurants in and around "Munster Village" Fulham Road and Parsons Green are all within easy walking distance including Parsons Green Underground Station.



Ground Floor
518 ft²



First Floor
314 ft²

Gowan Avenue, SW6
Approximate Gross Internal Area
77.29 SQ.M / 832 SQ.FT

All viewings by appointment through our
Fulham Office:

T: 020 7731 3636

E: fulham@lawsonrutter.com

347 Fulham Palace Road, London
SW6 6TB

In accordance with the Property Misdescription Act 1991, we wish to emphasise that the information given in these particulars is intended to help you decide whether you wish to view this property. Whilst every care is taken to ensure the accuracy of these particulars please note that all measurements are approximate and we are, for the accuracy of other information, reliant on what the seller has provided. We strongly recommend that you rely on your own inspections and those of your advisors to establish the details of any aspects which are of particular importance. Please note that we have not undertaken any survey of the property or the appliances within it and the buyer must rely on their own



- * WELL PRESENTED ONE BEDROOM HOUSE *
- * SECLUDED AND PRIVATE DEVELOPMENT *
- * LARGE OPEN PLAN KITCHEN *
- * LIVING AND DINING ROOM * DOUBLE BEDROOM *
- * BATHROOM INCLUDING SEPERATE SHOWER * SECURE GATED ACCESS *
- * ALLOCATED PARKING SPACE * WALKING DISTANCE TO EXCELLENT LOCAL *
- * AMENITIES & THE UNDERGROUND AT PARSONS GREEN * FREEHOLD *