



Orchard Road, Highgate, N6

Weekly Rental Of £761



800 finchley road, hampstead garden suburb, london, nw11 7tj

telephone 020 8458 5000 facsimile 020 8209 2068

email sales@litchfields.com web litchfields.com

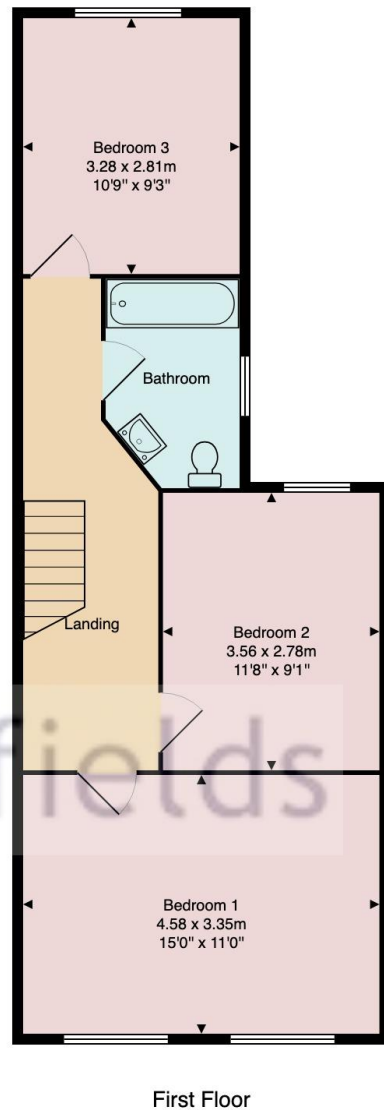
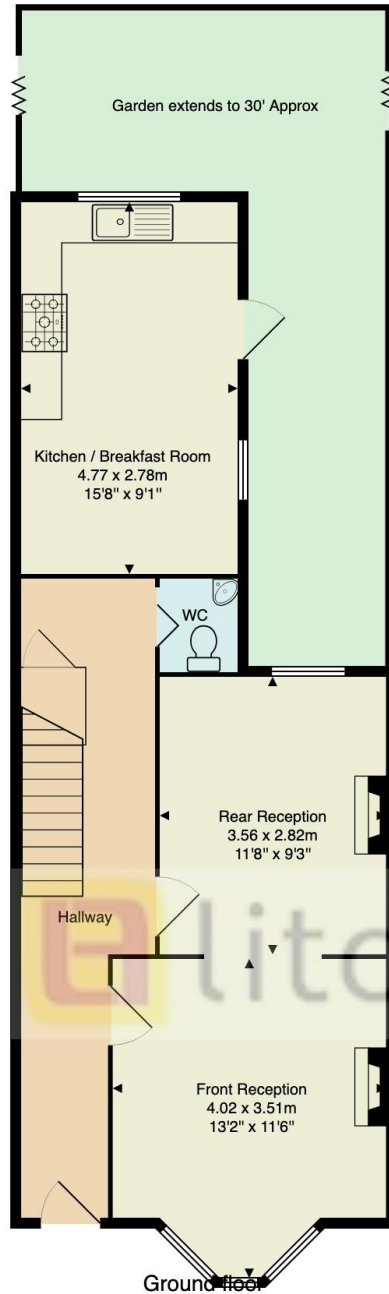
offices also in highgate

A newly decorated pretty character Three double bedroom terraced family home on this popular tree lined road, close to Parkland Walk, excellent local shops and Highgate Station on the Northern Line. Comprising entrance hall, guest cloakroom, lounge, dining room with door onto the rear garden, large kitchen/breakfast room also with garden access. 1st floor comprises three good size bedrooms with original polished wood floors and a lovely well appointed modern bathroom. New carpets have also been laid throughout the house. Pretty Two tier garden. Early viewing of this fantastic home is strongly recommended. Unfurnished.

Three Double Bedroom Family Home | Newly decorated and Carpeted | Two Receptions | Fully Fitted Kitchen/Breakfast Room | Guest Cloakroom | Family Bathroom | Approx. 7 Minute walk to Highgate Tube | Approx. 2 minute walk from local shops & Parkland Walk | Lovely rear garden and two patio areas | Unfurnished | EPC D



Orchard Road, Hornsey, London, N6 5TR



Approx. Gross Internal Area: 99.1 m² ... 1067 ft²

All measurements and areas are approximate only.
Dimensions are not to scale. This plan is for guidance only and must not be relied upon as a statement of fact.

