



53 Howard's Way, Bradwell

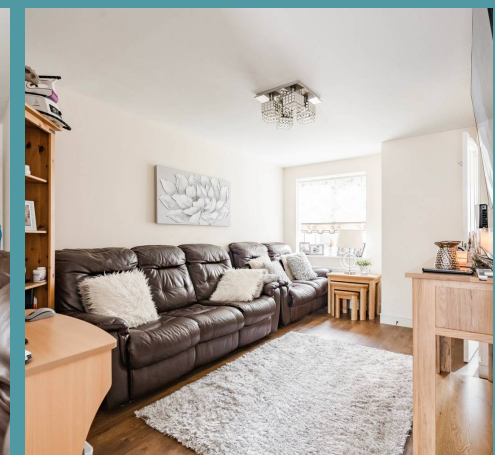
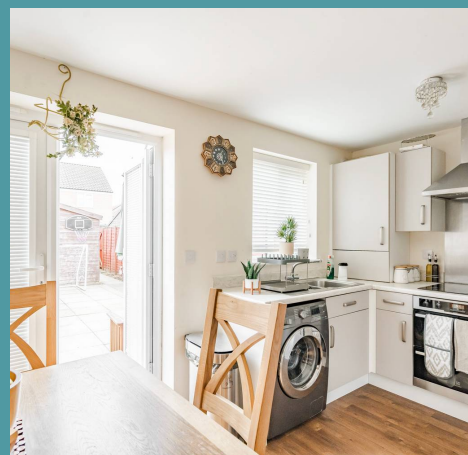
53 Howard's Way

Bradwell, Great Yarmouth

This delightful two bedroom mid-terraced house presents a prime opportunity for those seeking their perfect first home or a profitable investment purchase. The property boasts a comfortable and contemporary interior, offering a harmonious blend of style and functionality. With its versatile living spaces, quality finishes, and convenient location, this property is ready to welcome new owners into a lifestyle of ease and comfort.

LOCATION

Bradwell is a small village located in Norfolk, near Great Yarmouth, on the eastern coast of England. Positioned just a few miles inland from the popular seaside resort of Gorleston-on-Sea and Great Yarmouth itself, Bradwell offers a more tranquil setting compared to the bustling coastal areas. The village is primarily residential, with a mixture of modern and traditional houses, as well as local amenities like shops, schools, and parks. It is well-connected by road to nearby towns, making it a peaceful but accessible location. The surrounding Norfolk countryside adds to its charm, providing plenty of opportunities for walking and outdoor activities. With its proximity to the Broads National Park, the area also appeals to nature lovers and those seeking a quieter pace of life while still being near the coast.





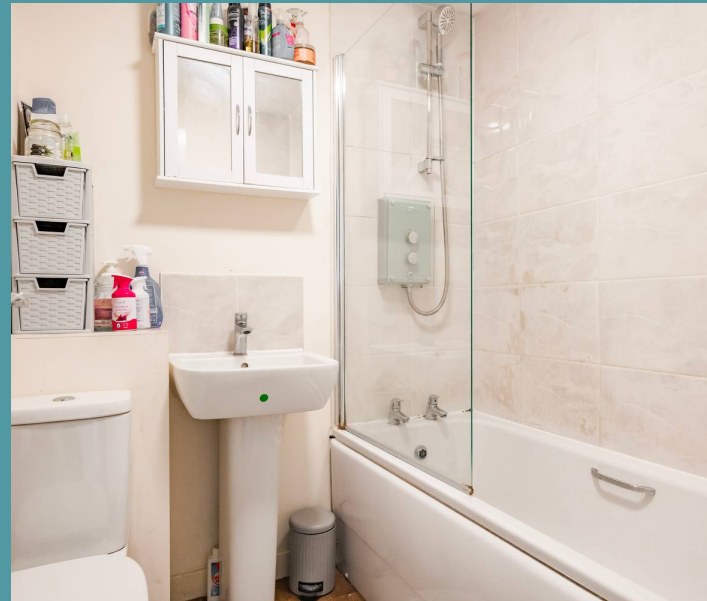
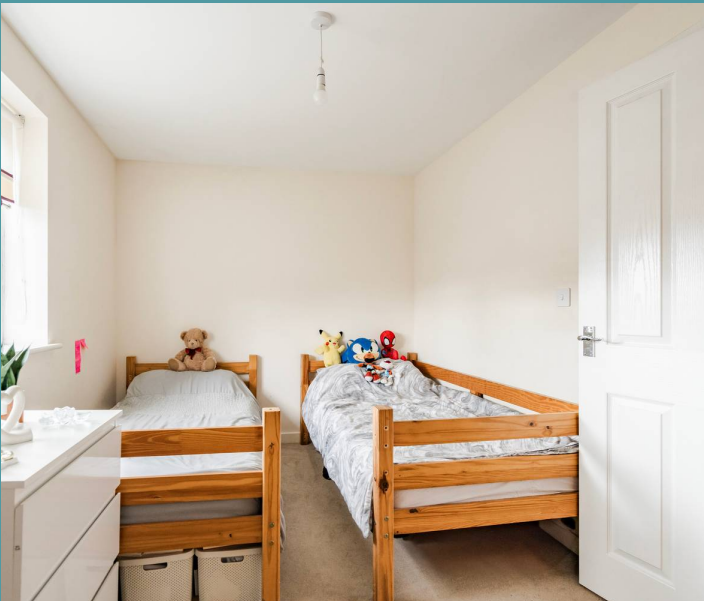
53 Howard's Way

Bradwell, Great Yarmouth

Step inside where you are greeted by a welcoming entrance hall. Positioned at the front of the residence is a comfortable sitting room, filled with an abundance of natural light, creating a wonderful space for relaxation and entertainment. The open-plan kitchen/dining room, ideal for modern family living, offers ample space for cooking, dining, and socialising, making it the heart of the home where cherished memories are made. It is fitted with units and appliances to be able to cook your favourite meals, offering ample amount of storage space and counter-top space for your meal preparation.

Ascend to the first floor where you will encounter two double bedrooms, providing ample space for a growing family or accommodating guests, along with a well-appointed bathroom offering functionality and style.

Furthermore, the low maintenance garden is primarily patio, fully enclosed for privacy and providing a secluded outdoor space for leisure and enjoyment. With the presence of a large wooden shed, suitable for storing your garden equipment. In addition, this property boasts a brick-weave driveway providing off-road parking for convenience.



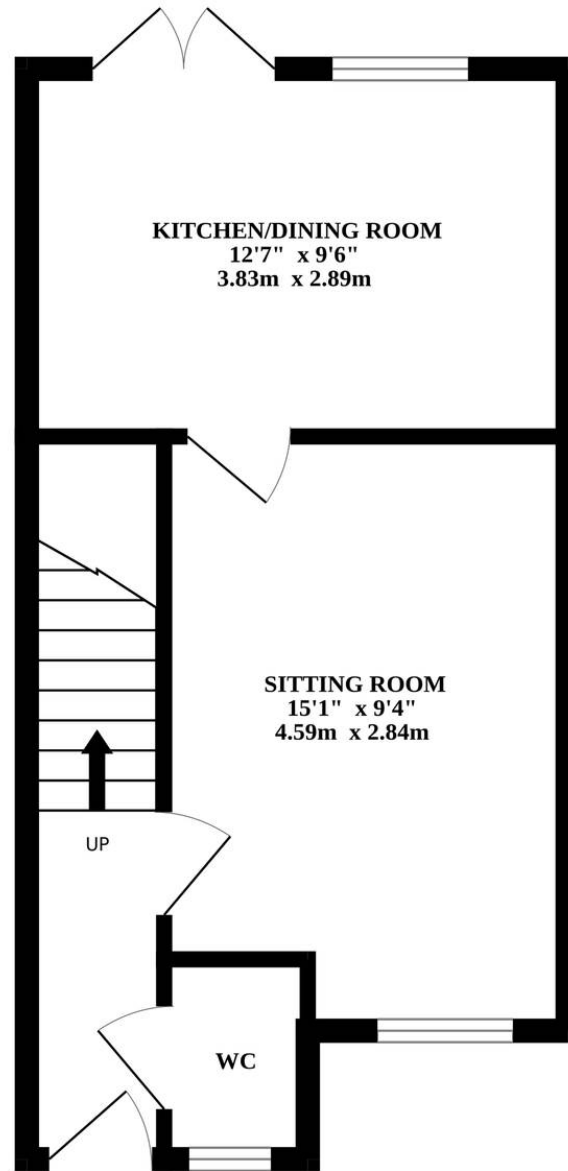
53 Howard's Way

Bradwell, Great Yarmouth

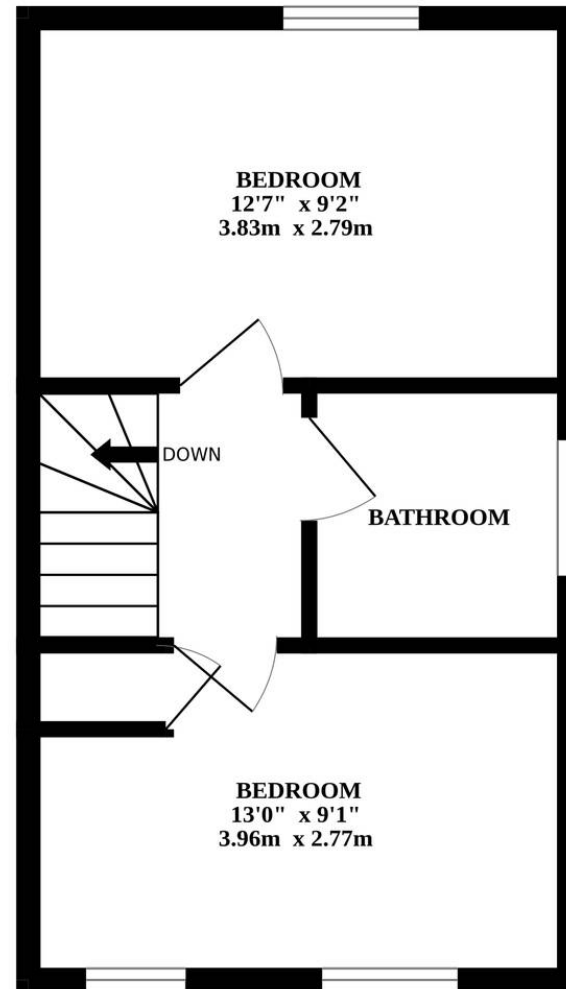
- MID-TERRACE RESIDENCE
- PERFECT FIRST HOME OR INVESTMENT PURCHASE
- COMFORTABLE AND CONTEMPORARY INTERIOR
- COMFORTABLE SITTING ROOM - FILLED WITH AN ABUNDANCE OF NATURAL LIGHT
- OPEN-PLAN KITCHEN/DINING ROOM - HIGH QUALITY FIXTURES AND FITTINGS
- TWO DOUBLE BEDROOMS & A BATHROOM
- LOW MAINTENANCE GARDEN - FULLY ENCLOSED FOR PRIVACY
- BRICK-WEAVE DRIVEWAY PROVIDING OFF-ROAD PARKING
- IN CLOSE PROXIMITY TO ALL LOCAL AMENITIES AND NATURAL SURROUNDINGS



GROUND FLOOR



1ST FLOOR



Whilst every attempt has been made to ensure the accuracy of the floorplan contained here, measurements of doors, windows, rooms and any other items are approximate and no responsibility is taken for any error, omission or mis-statement. This plan is for illustrative purposes only and should be used as such by any prospective purchaser. The services, systems and appliances shown have not been tested and no guarantee as to their operability or efficiency can be given.
Made with Metropix ©2024