



Three/ four bedroom bungalow in a semi-rural location

exclusive to

SAUNDERS

richardsaunders.co.uk

Tilley Lane Headley KT18

Leatherhead 5.9 miles
London by rail 45 minutes
M25 (Junction 9) 4.5 miles

All times and distances are approximate

Set within an impressive 1.75 acres of beautifully maintained grounds, this remarkable property originally a Victorian Gate House, seamlessly blends rural charm with the comforts of modern family living. This delightful home boasts three generously sized double bedrooms, including a well-appointed en-suite bathroom, alongside a family shower room ensuring ample space for relaxation and privacy.

Fibre Broadband Available

Gas, water, electricity, broadband and council tax utility bills are the tenants responsibility

We hold our deposits in a TDS scheme

The information is correct to the best of our knowledge on marketing this property



Available Now

Three/ Four Bedroom

Unfurnished

Rural Location

Short Drive To Leatherhead

Unfurnished

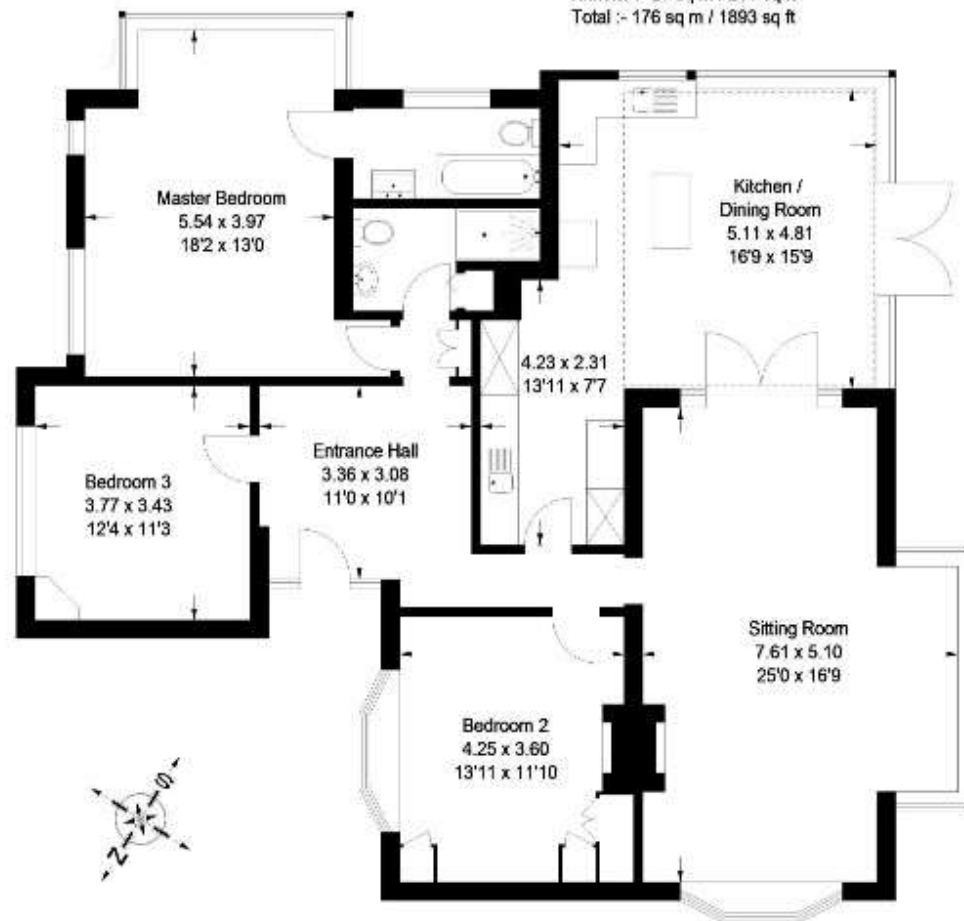
Price £3,500pcm





Cedars Lodge, Tilley Lane, Headley, Epsom, Surrey

Approximate Gross Internal Area :- 149 sq m / 1603 sq ft
 Annexe :- 27 sq m / 291 sq ft
 Total :- 176 sq m / 1893 sq ft

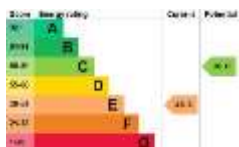


(Not Shown In Actual Location / Orientation)

Annexe



discover more at richardsaunders.co.uk



IMPORTANT NOTICE TO PURCHASERS: We endeavour to make our sales particulars accurate and reliable, however, they do not constitute or form part of an offer or any contract and none is to be relied upon as statements of representation or fact. The services, systems and appliances listed in this specification have not been tested by us and no guarantees as to their operating ability or efficiency are given. All measurements have been taken as guide to prospective buyers only, and are not precise. If you require clarification or further information on any points, please contact us, especially if you are travelling some distance to view.

Viewing
Please call us to arrange
a viewing appointment

1 Waterhouse Lane
Kingswood
01737 360000

2 High Street
Banstead
01737 363333

Residential Lettings
All Areas
01737 370700

