



Riverview Gardens, Apartment, Share of Freehold, SW13

RP
RANDALL PRICE



A Stunning three bedroom river facing Edwardian mansion apartment

Features

Three bedrooms
Two bathrooms
Spacious reception room

River views
Communal gardens
No onward chain

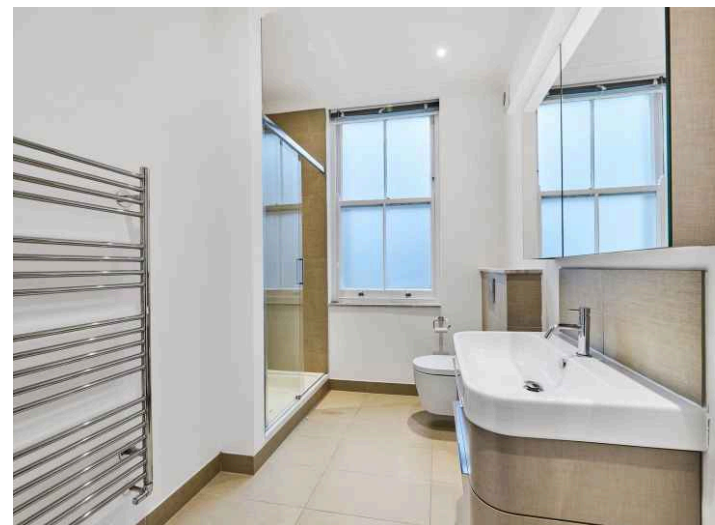
Property description

A beautiful three bedroom, spacious apartment of over 1300 sqft presented in excellent condition throughout. The property is located on the second floor of this Edwardian mansion block facing the river with incredible views.

The property is newly renovated and is turn key condition. The communal gardens are immaculately kept all year round and a wonderful shared outdoor space. This apartment come to the market with no forward chain.

Riverview Gardens enjoys a prime location parallel to the River Thames, just beside Hammersmith Bridge. The area offers a vibrant selection of pubs, restaurants, coffee shops, and independent boutiques in Barnes. It is also home to several outstanding schools, including St. Paul's, Colet Court, The Harrodian, and The Swedish School. Barnes benefits from National Rail connections to Clapham Junction and Waterloo, while a short walk across Hammersmith Bridge provides access to Hammersmith Broadway with its London Underground services.





Riverview Gardens

Approximate Gross Internal Area = 1339 sq ft / 124.4 sq m



This plan is not to scale and must be used as layout guidance only. All measurements and areas are approximate and should not be relied upon to provide accurate information. This plan must not be relied upon when making property valuations, design considerations or any other such relevant decisions. We accept no responsibility or liability (whether in contract, tort or otherwise) in relation to any loss whatsoever arising from or in connection with any use of this plan or the adequacy, accuracy or completeness of it or any information within it.



PLEASE UPLOAD
YOUR EPC



- 0208 087 3545
- info@randallprice.co.uk
- www.randallprice.co.uk
- Office 108, 20 Mortlake High Street, London, SW14 8JN

Brochure by fourwalls-group.com