

Marina Avenue Motspur Park, KT3 6NE

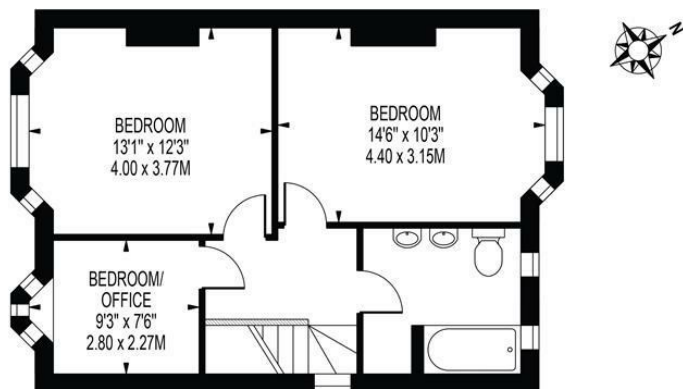
£695,000 Freehold



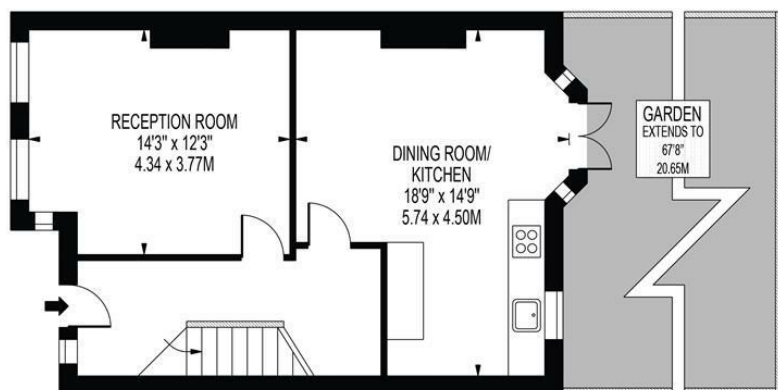
This charming three double bedroom, end of terrace 1930s house is located on one of Motspur Park's most desirable roads, only 0.1 Mile to both Motspur Park Station and the green space of The Sir Joseph Hood Memorial Playing Fields. There is a lovely 60 ft. rear garden with side access, off street parking to the front, a separate reception room, a spacious open plan kitchen/dining room, three double bedrooms and a modern family bathroom. Offering excellent potential to extend to the loft and rear S.T.P.P. Sold with no onward chain.

MARINA AVENUE

APPROXIMATE GROSS INTERNAL FLOOR AREA: 998 SQ FT - 92.70 SQ M



FIRST FLOOR

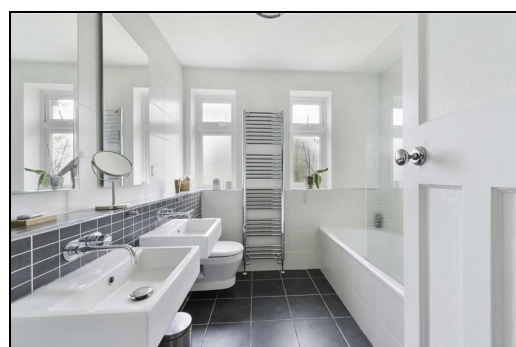


GROUND FLOOR

FOR ILLUSTRATION PURPOSES ONLY

THIS FLOOR PLAN SHOULD BE USED AS A GENERAL OUTLINE FOR GUIDANCE ONLY AND DOES NOT CONSTITUTE IN WHOLE OR IN PART AN OFFER OR CONTRACT. ANY INTENDING PURCHASER OR LESSEE SHOULD SATISFY THEMSELVES BY INSPECTION, SEARCHES, ENQUIRIES AND FULL SURVEY AS TO THE CORRECTNESS OF EACH STATEMENT. ANY AREAS, MEASUREMENTS OR DISTANCES QUOTED ARE APPROXIMATE AND SHOULD NOT BE USED TO VALUE A PROPERTY OR BE THE BASIS OF ANY SALE OR LET.

- Three Double Bedroom
- End Of Terrace 1930's House
- Off Street Parking
- 0.1 Miles To Motspur Park Station
- Separate Reception Room
- Open Plan Kitchen/Dining Room
- Potential To Extend S.T.P.P
- No Onward Chain
- EPC Rating - D
- Council Tax Band - E



Energy Efficiency Rating		
Very energy efficient - lower running costs	Current	Potential
A (91-100)		87
B (81-90)		
C (69-80)		64
D (55-68)		
E (39-54)		
F (21-38)		
G (1-20)		
Not energy efficient - higher running costs		
England & Wales		
EU Directive 2002/91/EC		

For Free Mortgage Quote and Best Mortgage Rates, call Ellisons Mortgage Advisor on 0208 944 9595



Although these particulars are believed to be correct, their accuracy is not guaranteed and they do not form part of any contract.

Celebrating 30 years
of successful Sales and
Lettings in Merton

