



This delightful two-bedroom semi-detached residence in Clacton-on-Sea is perfectly situated within a brief stroll to the beach, epitomizing coastal living. The home boasts a generous living area, a contemporary kitchen, and two inviting bedrooms. Additionally, it includes a garage and driveway for off-road parking, along with a south-facing garden that offers sea views.

## 5 Deal Close, Clacton-on-Sea, Essex, CO15 1NE

Offers in Excess of:

**£240,000**

EPC Rating: To be confirmed



**Accommodation:**

Lounge - 4.27m 3.96m (14'00" 13'00")

Dining Room - 3.48m 1.96m (11'5" 6'5")

Kitchen - 2.51m 1.85m (8'3" 6'1")

Conservatory - 3.53m 2.44m (11'7" 8'0")

Shower Room - 1.96m 1.73m (6'5" 5'8")

Bedroom Two - 3.00m 1.85m (9'10" 6'1")

Bedroom One - 3.40m 3.20m (11'2" 10'6")



For additional information and full photo gallery  
please visit [www.palmerpartners.com](http://www.palmerpartners.com)



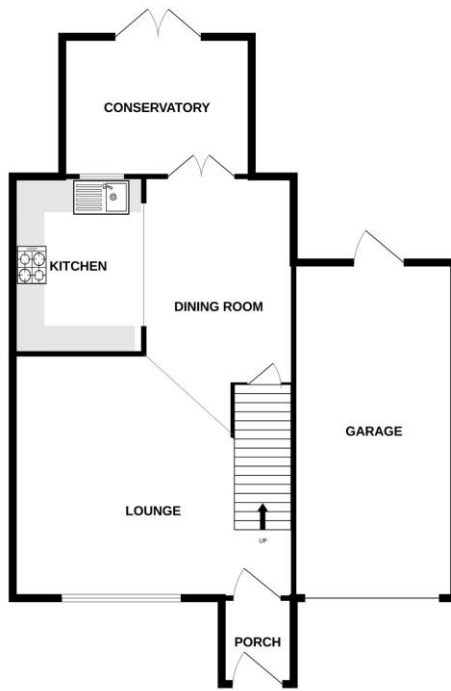
**Council Tax Band** - C

**Tenure** - Freehold

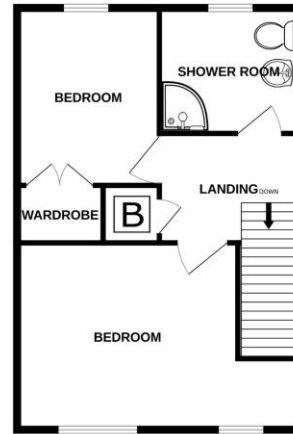
**Viewing** - By appointment through Palmer & Partners



GROUND FLOOR  
1124 sq.ft. (104.5 sq.m.) approx.



1ST FLOOR  
650 sq.ft. (60.4 sq.m.) approx.



TOTAL FLOOR AREA: 1774 sq.ft. (164.8 sq.m.) approx.

Whilst every attempt has been made to ensure the accuracy of the floorplan contained herein, measurements of doors, windows, rooms and any other items are approximate and no responsibility is taken for any error, omission or mis-statement. This plan is for illustrative purposes only and should be used as such by any prospective purchaser. The services, systems and appliances shown have not been tested and no guarantee as to their operability or efficiency can be given.  
Made with Metoska C3024

For additional information and full photo gallery please visit  
[www.palmerpartners.com](http://www.palmerpartners.com)

Every attempt has been made to ensure accuracy; however, these property particulars are approximate and for illustrative purposes only. They have been prepared in good faith and they are not intended to constitute part of an offer of contract. We have not carried out a structural survey and the services, appliances, and specific fittings have not been tested. All photographs, measurements, floor plans, and distances referred to are given as a guide only and should not be relied upon for the purchase of any fixture or fittings. Lease details, service charges and ground rent (where applicable) are given as a guide only and should be checked prior to agreeing a sale.