



Queens Ride, London SW13 0HX

---

**WAYNE  
& SILVER**



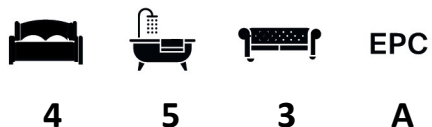
# Queens Ride, London SW13 0HX

A brand new four bedroom semi-detached family home located on Queens Ride, Barnes. This gorgeous family home has been finished to an exceptional standard and boasts over 3500sqft of internal living space. On the ground floor there is a front reception room complete with oak herringbone flooring and a stylish gel fireplace. To the rear of the property is a contemporary bespoke kitchen with oak units, Carrera marble worktops and a range of integrated appliances along with sliding doors leading to a south facing rear garden. The lower ground floor offers a flexible space with access to a patio garden, currently set up as a games room but could be utilised as a gym, cinema or perhaps even a play room. There is also a large double bedroom with en-suite bathroom and access to a private patio garden.

On the first floor there is an incredible principal bedroom with a walk-in dressing room, luxurious en-suite bathroom and a Juliette balcony. A second double bedroom also benefits from a walk-in wardrobe and modern en-suite shower room. The second floor hosts two further double bedrooms as well as a modern family bathroom. Additionally the property benefits from gated off-street parking for two cars, utility/plant room, underfloor heating, air conditioning and solar panels.

Queens Ride is located next to the beautiful open spaces of Barnes Common as well as being ideally positioned for the wonderful amenities on offer in Barnes Village. Residents can also enjoy Richmond Park, London's largest park spanning over 2500 acres as well as a number of health clubs located in the vicinity. Transport links including Barnes Station (0.1 miles) and Barnes Bridge Station (0.7 miles). Barnes offers an enviable selection of schooling options including Paddock School, Barnes Primary School, The Harrodian, St Paul's and The Swedish School.

Council: Richmond Upon Thames  
Tax Band: H



**Guide price:** £3,000,000

**Tenure:** Freehold

**Service Charge:** Add text here

**Local Authority:** Richmond Upon Thames

**Council Tax Band:** H











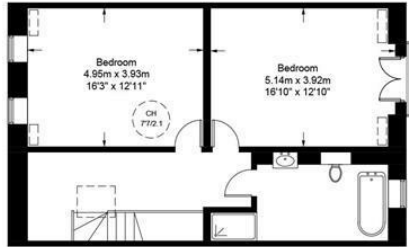




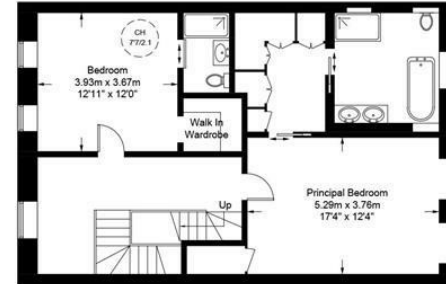


## Queens Ride, SW13

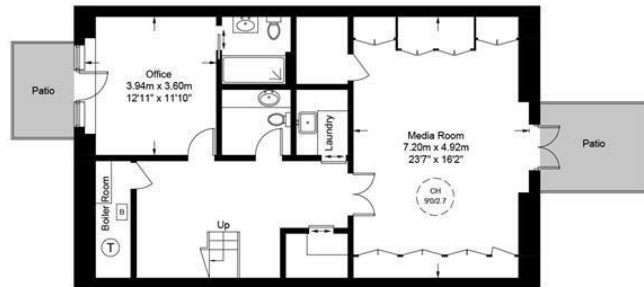
Approximate Gross Internal Area = 3560 sq ft / 330.8 sq m  
(Excluding Reduced Headroom)  
Reduced Headroom = 10 sq ft / 0.9 sq m  
Total = 3570 sq ft / 331.7 sq m



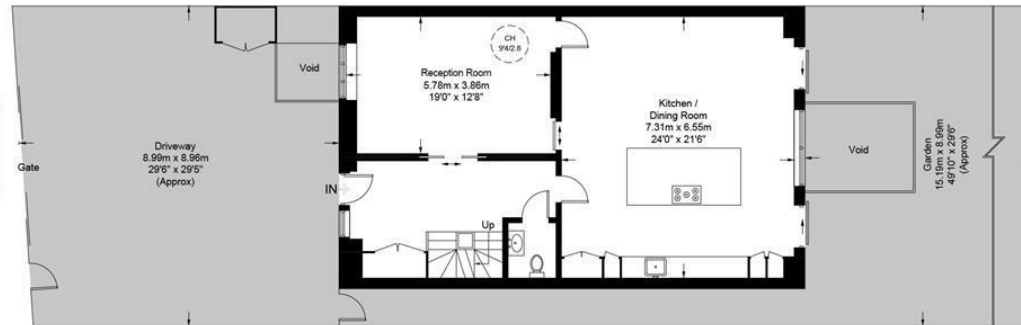
Second Floor



First Floor



Lower Ground Floor



Ground Floor



This plan is for layout guidance only. Not drawn to scale unless stated. Windows and door openings are approximate. Whilst every care is taken in the preparation of this plan, please check all dimensions, shapes and compass bearings before making any decisions reliant upon them. (ID894955)

41 Heath Street  
Hampstead  
London  
NW3 6UA

We would be delighted to tell you more  
020 7431 4488  
info@wayne-silver.com

**Important Notice:** Wayne & Silver, its clients and any joint agents give notice that 1: They are not authorised to make or give any representations or warranties in relation to the property either here or elsewhere, either on their own behalf or on behalf of their client or otherwise. They assume no responsibility for any statement that may be made in these particulars. These particulars do not form part of any offer or contract and must not be relied upon as statements or representations of fact. 2: Any areas, measurements or distances are approximate. The text, photographs and plans are for guidance only and are not necessarily comprehensive. It should not be assumed that the property has all necessary planning, building regulation or other consents and Wayne & Silver have not tested any services, equipment or facilities. Purchasers must satisfy themselves by inspection or otherwise.