



The Croft

Sheriff Hutton, YO60 6SQ

Asking Price £280,000



The Croft

Sheriff Hutton, YO60 6SQ

STYLE – Semi Detached Bungalow
HIGHLIGHTS - Desirable Village Location,
Updated Throughout, Large Garden
THREE WORDS – Move Straight In

Charming Bungalow in Desirable Village Setting

Welcome to 3 The Croft, Sheriff Hutton, YO60 – a beautifully renovated semi-detached bungalow nestled in the heart of the highly sought-after village of Sheriff Hutton. This delightful property offers a perfect blend of modern comfort and village charm, making it an ideal home for families or those seeking a peaceful retreat.

The property has undergone extensive renovations, including new wiring, sockets, lights, windows, and doors, ensuring a fresh and contemporary feel throughout.

Upon entering, you are greeted by the utility room ideal for leaving shoes and coats adding convenience to everyday living. The newly fitted kitchen is a chef's delight, boasting modern appliances and ample storage. Continue into a light and airy sitting room, featuring a newly installed Morso wood burner, perfect for cosy evenings. The room is spacious enough to accommodate both comfy seating and a dining table, creating a warm and inviting atmosphere for family gatherings or entertaining friends.

With three well-proportioned bedrooms, this bungalow offers flexibility for family living or the option to create a home office or guest room. The newly fitted smart bathroom adds a touch of luxury, providing a serene space to unwind after a long day.

Outside, the property sits on a generous plot



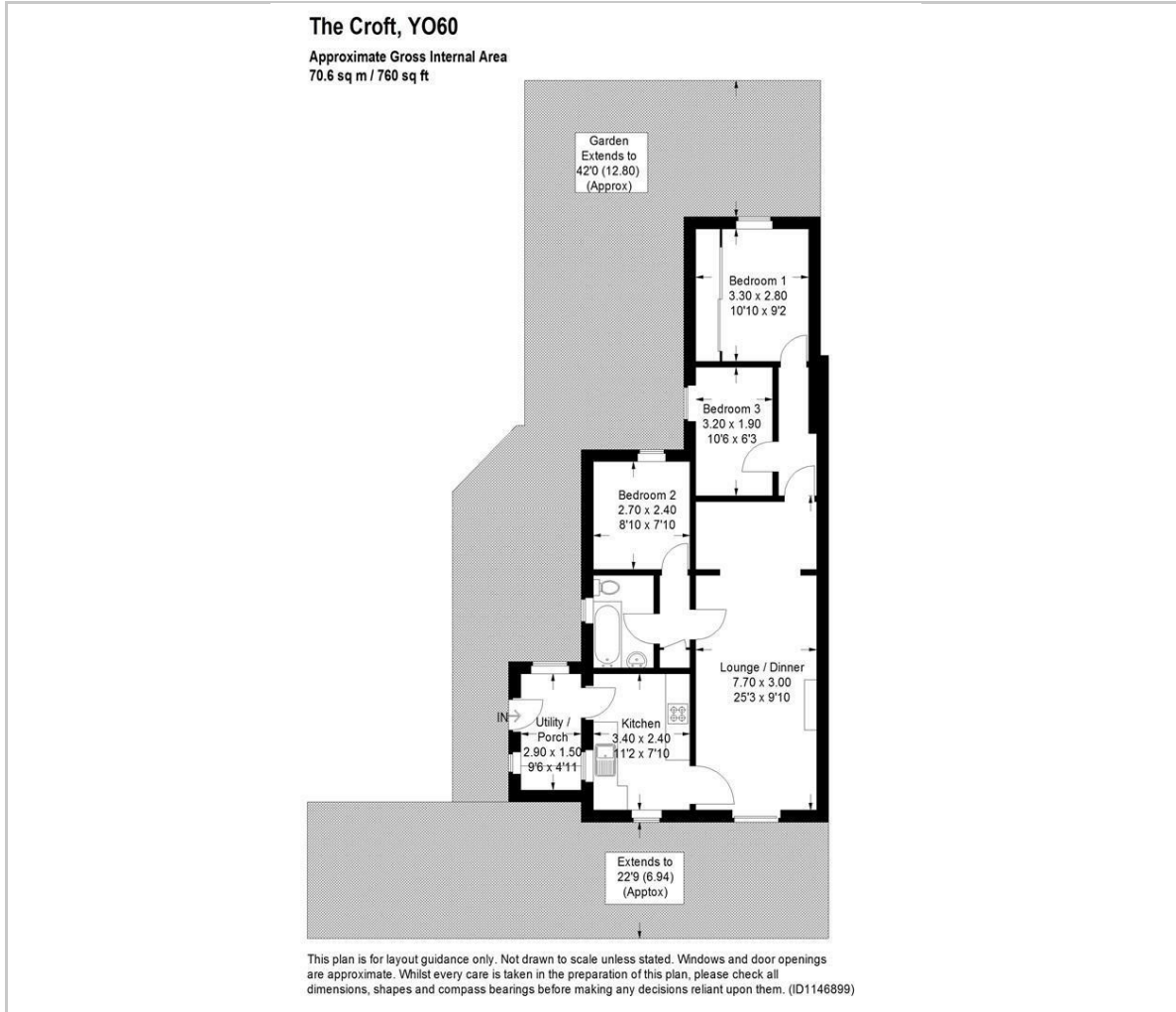


with a lovely private garden, perfect for outdoor activities or simply enjoying the tranquility of village life. The newly installed decking area, accessible via patio doors, is an ideal spot for alfresco dining or a morning coffee. The garden is enclosed with new fencing, ensuring privacy and security.

Practical features include generous off-street parking, a recently serviced oil boiler, and a new oil tank, providing efficient heating solutions. This charming bungalow is a rare find in a desirable location, offering a wonderful lifestyle opportunity in the heart of Sheriff Hutton. Don't miss the chance to make this delightful property your new home.



Floor Plan



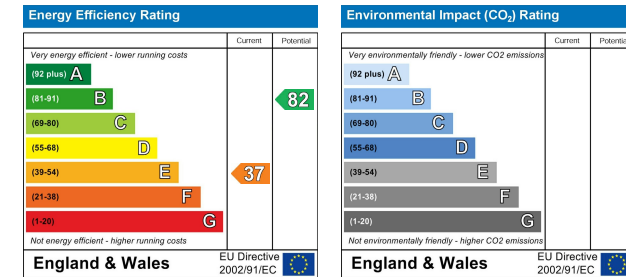
Viewing

Please contact our Emsley Mavor Estate Agents Office on 01347823579 if you wish to arrange a viewing appointment for this property or require further information.

Area Map



Energy Efficiency Graph



These particulars, whilst believed to be accurate are set out as a general outline only for guidance and do not constitute any part of an offer or contract. Intending purchasers should not rely on them as statements of representation of fact, but must satisfy themselves by inspection or otherwise as to their accuracy. No person in this firm's employment has the authority to make or give any representation or warranty in respect of the property.

1 Tollbooth Building Market Place, Easingwold, North Yorkshire, YO61 3AB
Tel: 01347823579 Email: info@emsleymavor.co.uk <http://emsleymavor.co.uk>