

Pantiles House Wimbledon, SW19 3AN

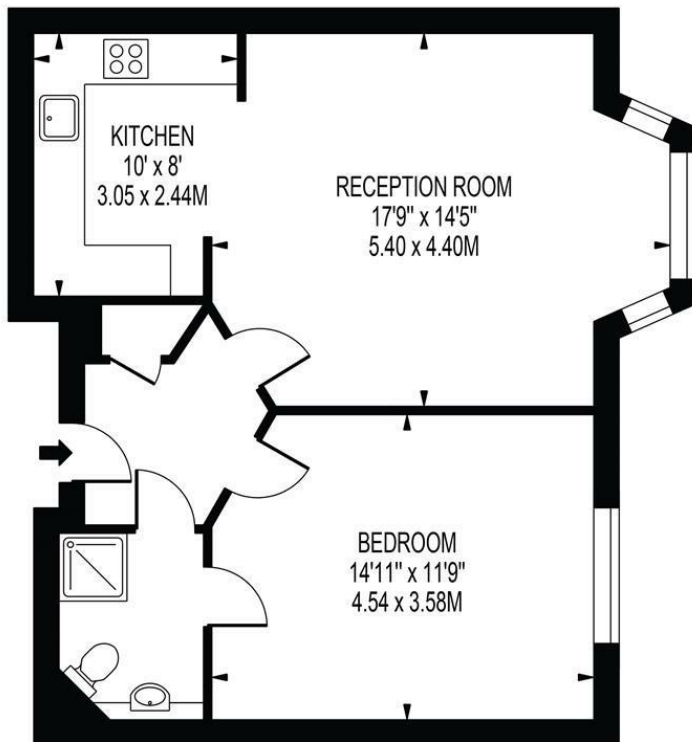
£199,950 Leasehold



75% OWNERSHIP SCHEME - OVER 55's ONLY - Offered to the market with no onward chain, a spacious one double bedroom first floor Retirement Apartment situated in a desirable cul-de-sac in Merton Park, Wimbledon. Built by Housing 21 for those aged 55 years and over, this enviable development is within close proximity to multiple transport links and the numerous amenities, restaurants and shopping facilities of Wimbledon Town Centre. This superb development offers a personal alarm system, the option of tailored 24 hour care, a full time on site Court Manager Service 7 days a week, lunchtime restaurant, communal lounge, guest accommodation, laundry facilities and a hairdressing salon, with parking at the rear.

PANTILES HOUSE

APPROXIMATE GROSS INTERNAL FLOOR AREA: 569 SQ FT - 52.83 SQ M



FIRST FLOOR

FOR ILLUSTRATION PURPOSES ONLY

THIS FLOOR PLAN SHOULD BE USED AS A GENERAL OUTLINE FOR GUIDANCE ONLY AND DOES NOT CONSTITUTE IN WHOLE OR IN PART AN OFFER OR CONTRACT. ANY INTENDING PURCHASER OR LESSEE SHOULD SATISFY THEMSELVES BY INSPECTION, SEARCHES, ENQUIRIES AND FULL SURVEY AS TO THE CORRECTNESS OF EACH STATEMENT. ANY AREAS, MEASUREMENTS OR DISTANCES QUOTED ARE APPROXIMATE AND SHOULD NOT BE USED TO VALUE A PROPERTY OR BE THE BASIS OF ANY SALE OR LET.

- One Double Bedroom Apartment
- First Floor
- Open-Plan Kitchen/Reception Room
- Communal Gardens and Numerous Amenities Provided in The Development
- Sought After Location in Merton Park
- No Onward Chain
- Leasehold
- Service Charges - £464 PCM, Ground Rent - N/A
- EPC Rating B
- Council Tax Band C



Energy Efficiency Rating		
	Current	Potential
Very energy efficient - lower running costs		
(92 plus) A		
(81-91) B	83	83
(69-80) C		
(55-68) D		
(39-54) E		
(21-38) F		
(1-20) G		
Not energy efficient - higher running costs		
England & Wales		
EU Directive 2002/91/EC		

For Free Mortgage Quote and Best Mortgage Rates, call an Ellisons Mortgage Advisor on 020 8944 9494



Although these particulars are believed to be correct, their accuracy is not guaranteed and they do not form part of any contract.

Celebrating 30 years of successful Sales and Lettings in Merton

