



CHASE APARTMENTS
LONDON



Fountain Park Way, White City Living, London, W12 W12 7JT

£3,467 Per Month

- 2 Double bedrooms
- Hyper Optic Internet
- Residents Lounge
- Business meeting rooms
- Fully Furnished
- Air cooling
- Swimming Pool
- 24 hour concierge
- Private Cinema
- Fitness Centre & Spa

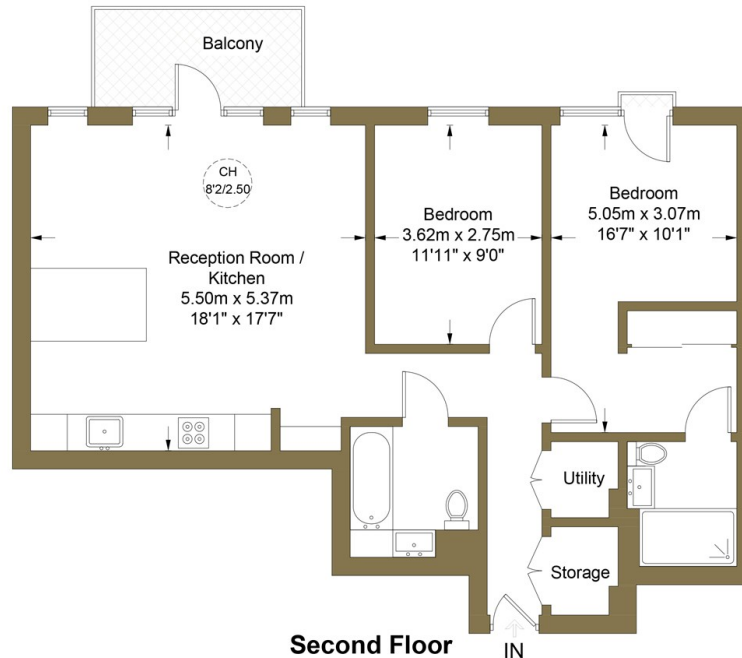
Grosvenor Waterside, 32 Gatliff Road, Belgravia, London, SW1W 8QN
02077225022

<http://www.chaseapartments.com/>



Belvedere Row Apartments, W12

Approximate Gross Internal Area = 76.6 sq m / 824 sq ft



This plan is for layout guidance only. Not drawn to scale unless stated. Windows and door openings are approximate. Whilst every care is taken in the preparation of this plan, please check all dimensions, shapes and compass bearings before making any decisions reliant upon them. (ID725458)



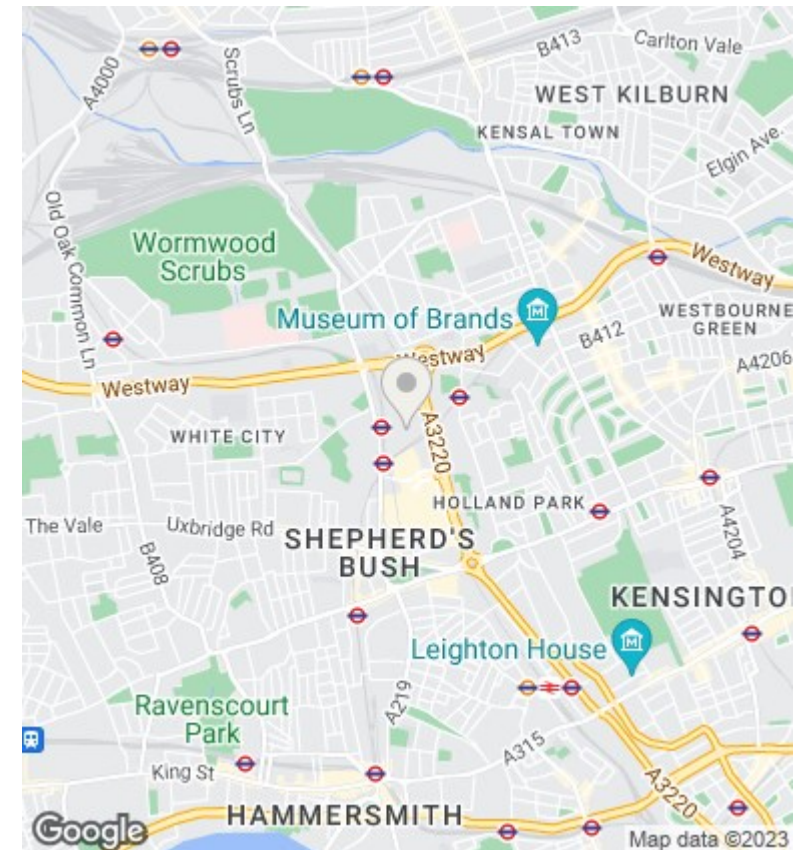
CHASE APARTMENTS
LONDON

Viewings

Viewings by arrangement only.
Call 02077225022 to make an appointment.

Council Tax Band

EPC Rating:



Energy Efficiency Rating		
	Current	Potential
Very energy efficient - lower running costs		
(92 plus) A		
(81-91) B		
(69-80) C		
(55-68) D		
(39-54) E		
(21-38) F		
(1-20) G		
Not energy efficient - higher running costs		
England & Wales	EU Directive 2002/91/EC	