



Church Lane, Northaw



- STUNNING COTTAGE
- FULL OF CHARACTER AND CHARM
- 3 RECEPTION ROOMS
- FABULOUS LOCATION
  
- 70FT GARDEN
- 2 BATHROOMS

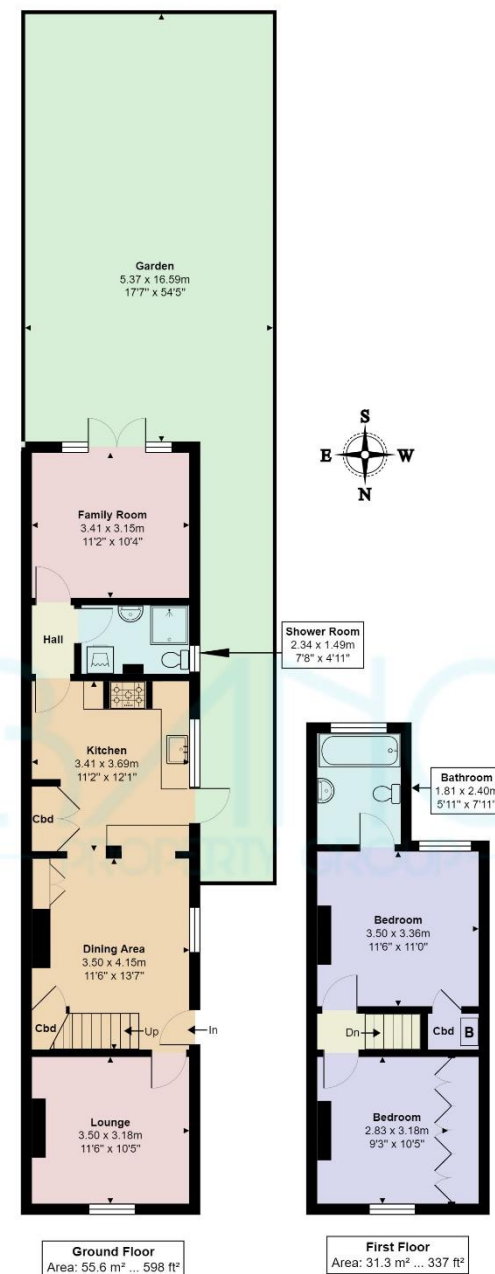
**Church Lane**  
Northaw EN6 4NX

A beautifully presented 2/3 bedroom semi-detached period cottage which is full of character and charm yet is spacious in design, particularly on the ground floor which boasts 3 reception rooms, ground floor shower room and a good sized kitchen. The first floor has 2 bedrooms and a spacious en-suite bathroom. The property has many original features including fireplaces, sash windows, exposed brickwork and a charming 70ft South facing rear garden with a full width patio, raised area of lawn and a variety of mature shrubs and trees and a good sized summerhouse to the rear.

Northaw is a pretty village situated between the towns of Cuffley and Potters Bar where direct rail links are available to London Moorgate via Finsbury Park and Highbury & Islington. There is a primary school a short walk from the property, a country pub and restaurant and plenty of rural walks. State and independent schooling nearby includes Dame Alice Owen, Stormont, Lochinver, Chancellors and Cuffley JMI.



Score	Energy rating	Current	Potential
92+	A		
81-91	B		82 B
69-80	C		
55-68	D	58 D	
39-54	E		
21-38	F		
1-20	G		



Church Lane, Northaw, Potters Bar, EN6 4NX

Total Area: 86.9 m<sup>2</sup> ... 936 ft<sup>2</sup> (excluding garden)  
All measurements are approximate and for display purposes only