



CHASE APARTMENTS
LONDON



The Madison, 203 Marsh Wall, Canary Wharf E14 9ZN

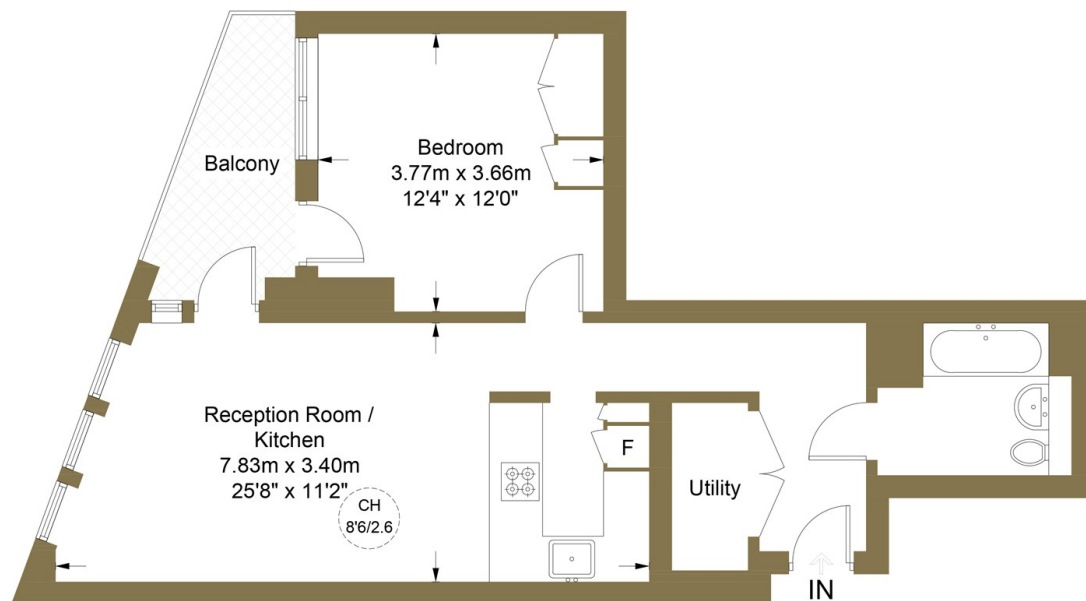
£600,000

- 24/7 concierge
- Residents lounge with bar
- Business meeting rooms
- Walking to distance to South Quay Station
- swimming pool
- Located on the 17th floor
- gym / spa



Amory Tower, E14

Approximate Gross Internal Area = 54.1 sq m / 582 sq ft



Seventeenth Floor

This plan is for layout guidance only. Not drawn to scale unless stated. Windows and door openings are approximate. Whilst every care is taken in the preparation of this plan, please check all dimensions, shapes and compass bearings before making any decisions reliant upon them. (ID788934)



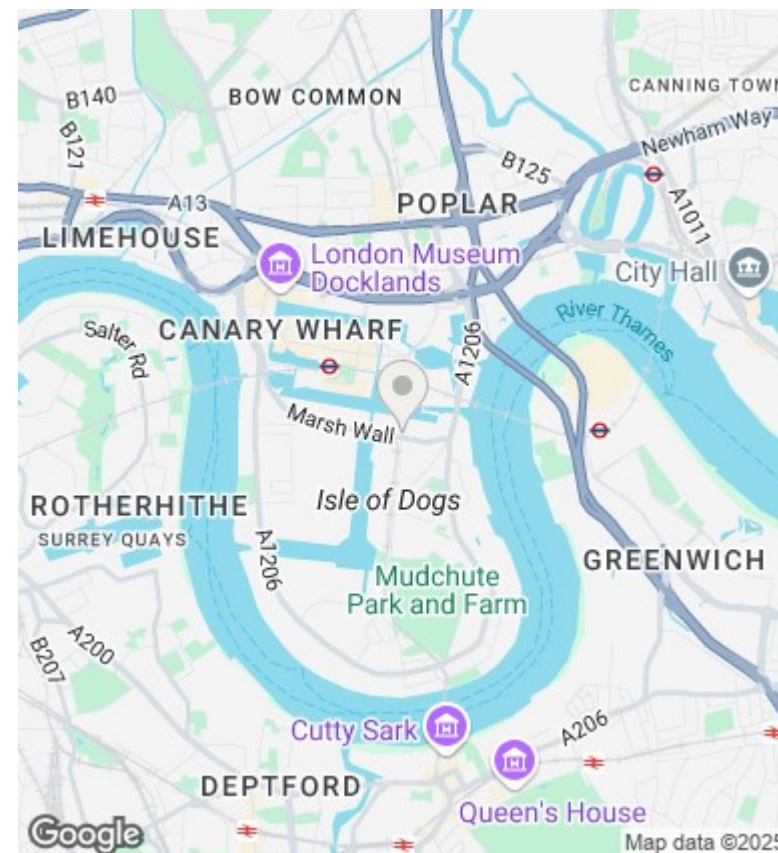
CHASE APARTMENTS
LONDON

Viewings

Viewings by arrangement only.
Call 02077225022 to make an appointment.

Council Tax Band

EPC Rating:



Energy Efficiency Rating		
	Current	Potential
Very energy efficient - lower running costs		
(92-plus) A		
(81-91) B		
(69-80) C		
(55-68) D		
(39-54) E		
(21-38) F		
(1-20) G		
Not energy efficient - higher running costs		
England & Wales	EU Directive 2002/91/EC	