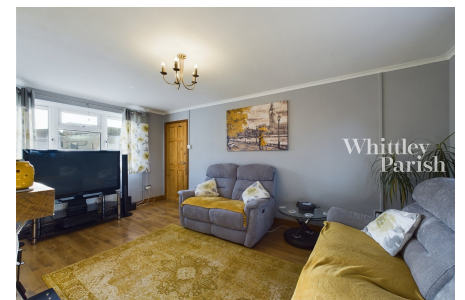


## Park View, Botesdale

Guide Price £285,000 - £300,000

3 1 2



A most spacious three bedroom house enjoying a pleasing end-of-close position and within walking distance of amenities and facilities. Benefitting from extensive off-road parking, large gardens and solar panelling.

## Key Features

- Guide Price £285,000 - £300,000
- Solar Panels
- Walking distance to amenities
- Council Tax Band B
- End of close position
- 2 reception rooms
- Extensive off-road parking
- Sought after village
- Freehold
- Drainage - Mains

