



Southfield Road, London, W4 1BB

Guide Price £550,000

**WHITMAN & CO.**

SALES · LETTINGS · COMMERCIAL

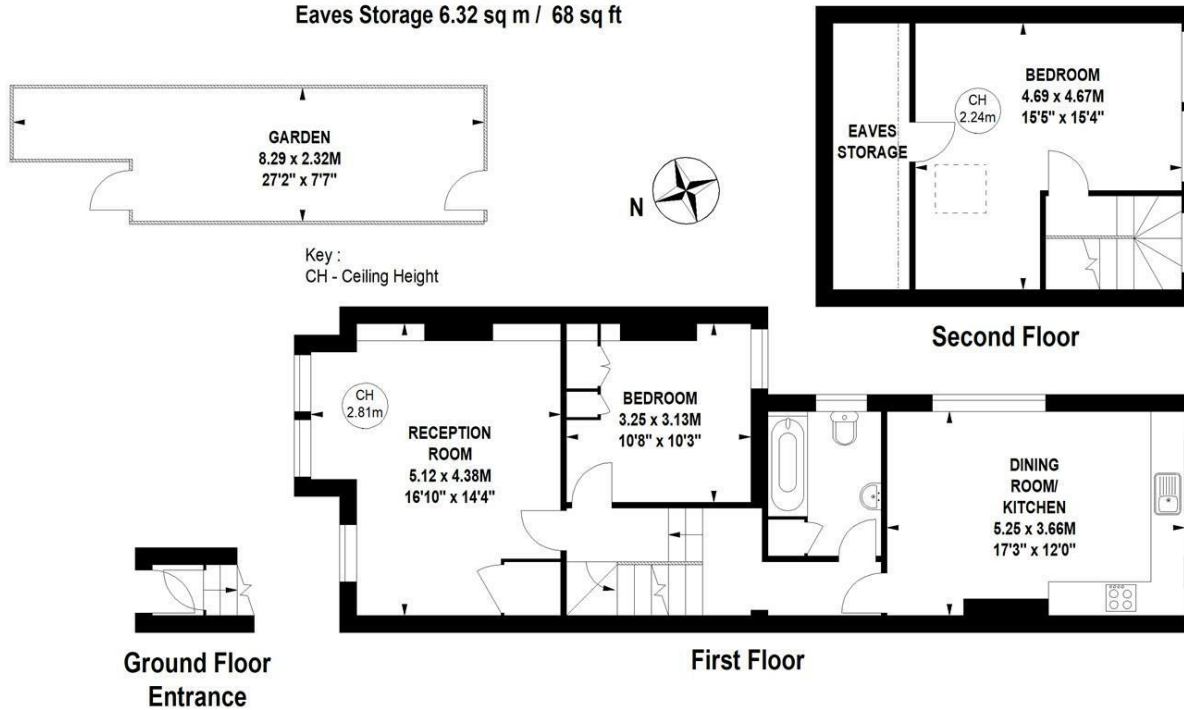
- Bright and spacious apartment
- Private south facing garden
- Excellent entertaining space
- 1028 sqft including eaves
- Split-level
- No onward chain

Tenure - Leasehold  
 Lease length - 71 Years remaining  
 Ground Rent - £150 pa  
 Service Charge - £450 pa  
 Local Authority - Ealing  
 Council Tax - Band E

## Southfield Road, W4

Approximate gross internal area  
**95.50 sq m / 1028 sq ft**  
 (Including Eaves Storage)

Eaves Storage 6.32 sq m / 68 sq ft

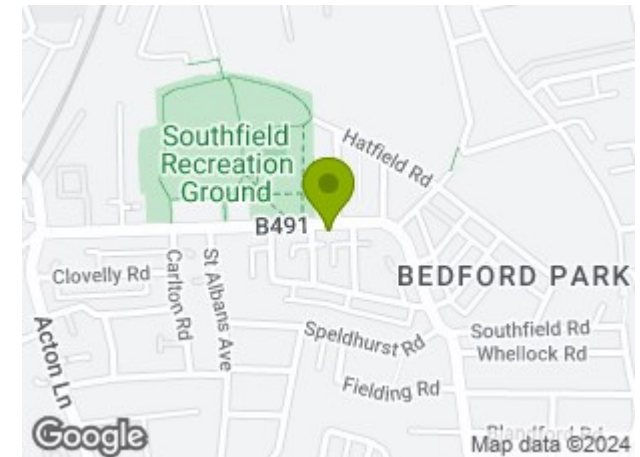


Not to scale, for guidance only and must not be relied upon as a statement of fact.  
 All measurements and areas are approximate only

## THE PROPERTY

A bright and spacious split level apartment with private garden totalling in excess of 1000sqft located within a short walk of Chiswick High Road and local parks. The accomodation comprises a private ground floor entrance, full width reception room with bay window, dual aspect kitchen/breakfast room with trap door to garden, two double bedrooms, bathroom, private garden with rear access, eaves storage. The flat is located within a short walk of Chiswick High Road's shops, cafes and restaurants and is very close to Southfield Park. Transport links include Turnham Green station, local bus routes and the A4/M4 for routes in and out of London. No onward chain.

## SITUATION



5-7 Turnham Green Terrace, Chiswick, London, W4 1RG

Tel 020 8747 8800

E-mail [sales@whitmanandco.com](mailto:sales@whitmanandco.com)

Website [www.whitmanandco.com](http://www.whitmanandco.com)