



Linden Gardens, London, W4 2EW

Guide Price £550,000

**WHITMAN & CO.**

SALES · LETTINGS · COMMERCIAL



- Stunning period conversion
- 16'5x16'4 Reception room
- Sought after central location
- Landscaped private garden
- Private entrance
- No onward chain

Tenure - Leasehold with share of freehold  
 Lease length - 89 years remaining  
 Ground rent - Peppercorn  
 Service charge - £1008 pa  
 Local authority - Hounslow  
 Council tax - Band E

## THE PROPERTY

An immaculately presented, recently refurbished period apartment with a private garden located in this central location a stone's throw from Chiswick High Road's shops, cafes and restaurants. The property offers spacious and light rooms with the accommodation comprising a stunning 16'6x16'4 reception room with a feature fireplace and large windows, a stylish fitted kitchen, a large double bedroom with fitted wardrobes and French doors onto the garden, a bathroom with full bath and shower over, lovely landscaped garden over two levels, utility/store room, wood floors throughout, private entrance and share in the freehold. The flat is in a superb location just off the High Road close to numerous shops, cafes and restaurants. Transport links include Turnham Green station, local bus routes and the A4/M4 for routes in and out of London. No chain.

## SITUATION



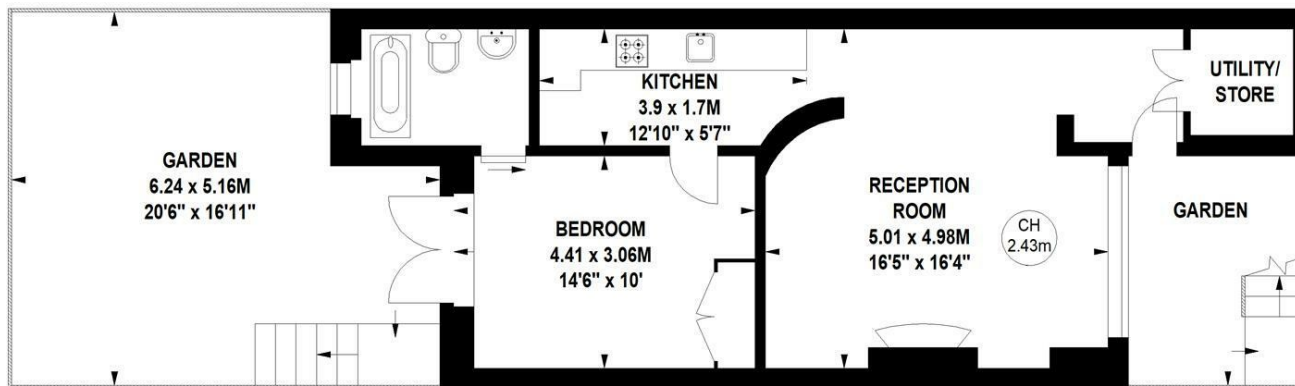
## Linden Gardens, W4

Approximate gross internal area

53.51 sq m / 576 sq ft



Key :  
CH - Ceiling Height



## Ground Floor

Not to scale, for guidance only and must not be relied upon as a statement of fact.  
 All measurements and areas are approximate only

5-7 Turnham Green Terrace, Chiswick, London, W4 1RG

Tel 020 8747 8800

E-mail [sales@whitmanandco.com](mailto:sales@whitmanandco.com)

Website [www.whitmanandco.com](http://www.whitmanandco.com)