



97a St Pauls Road, Islington, London, N1 2NA

£854 Per Week

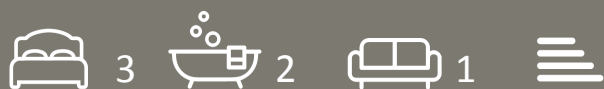
- 2 Mins Walk to Upper Street
- Close to public transport
- Private Terrace
- 3 Double Bedrooms
- Highbury & Islington Tube
- Shops and Amenities Nearby
- Close to Local Bars and Shops
- Over 560 sq ft
- Wood Flooring Throughout

97a St Pauls Road, Islington N1 2NA

Fantastic split level 3 bed apartment located a stones throw away from Highbury & Islington Station which also benefits from a roof terrace and an additional patio.

The property comprises of a bright a spacious living/dining area, bespoke fully fitted kitchen, 2 large double bedrooms situated on the top floor along with a modern bathroom as well as separate W/C. On the lower level is situated the third bedroom with its own en-suite bathroom.

The property is perfect for 3 professionals wanting easy access to the city and west end, Highbury and Islington Underground station is only a two minute walk from the property.



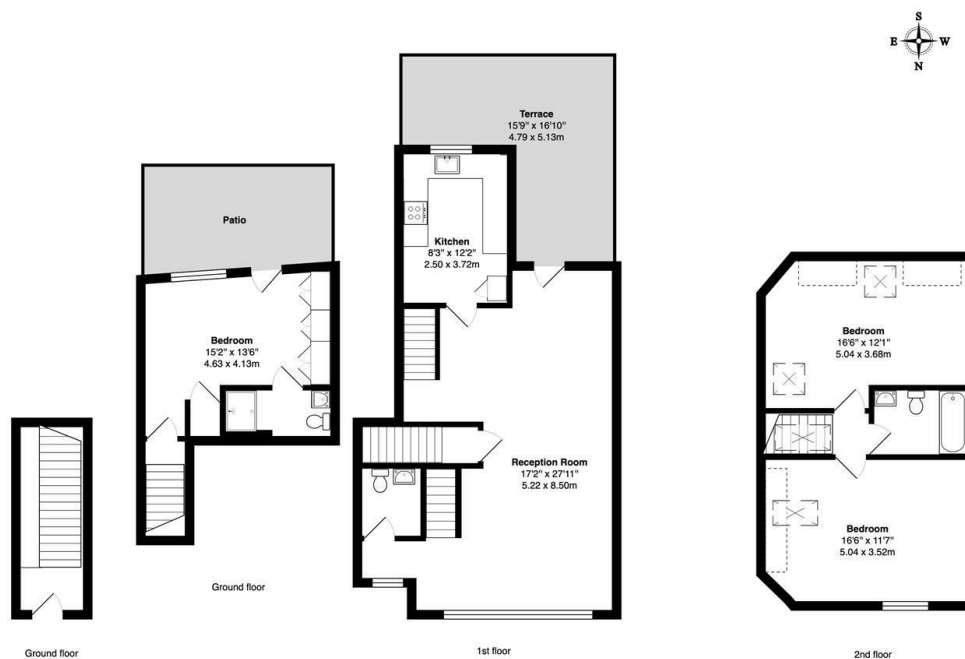
Council Tax Band: C



Full description







St Pauls Road, N1
Total Gross Area: 1355 ft² ... 125.9 m² (excluding terrace, patio)

All measurements are approximate and for identification guideline purposes only, not to scale.
Complain with the RICS code of measuring practice

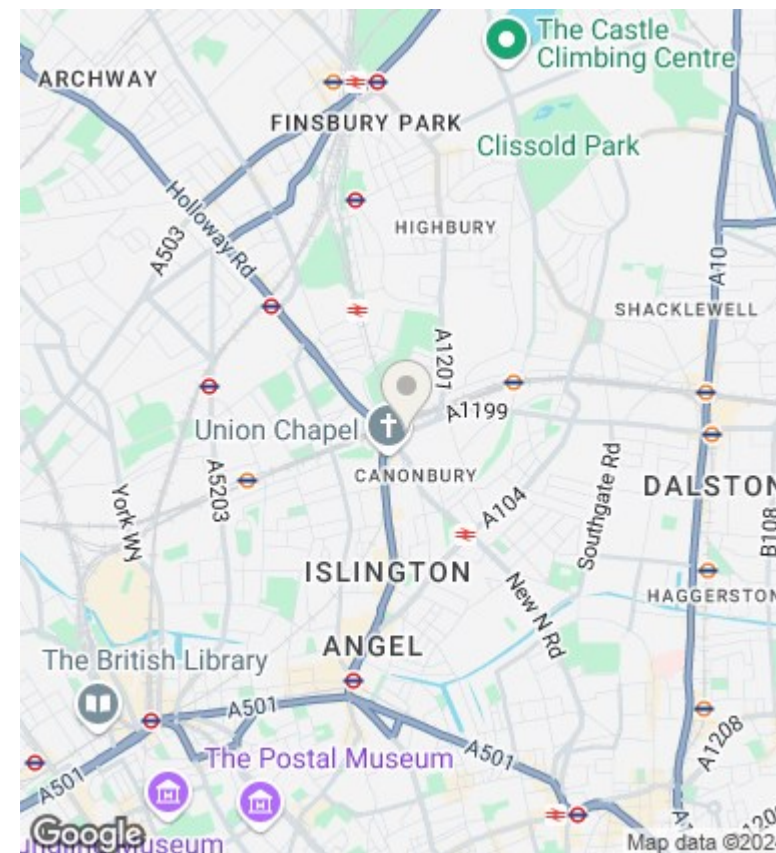
Directions

Viewings

Viewings by arrangement only. Call 02073593191 to make an appointment.

Council Tax Band

C



Energy Efficiency Rating		
	Current	Potential
Very energy efficient - lower running costs		
(92 plus) A		
(81-91) B		
(69-80) C		
(55-68) D		
(39-54) E		
(21-38) F		
(1-20) G		
Not energy efficient - higher running costs		
England & Wales		EU Directive 2002/91/EC