



5 Marshgate, North Walsham  
£500,000

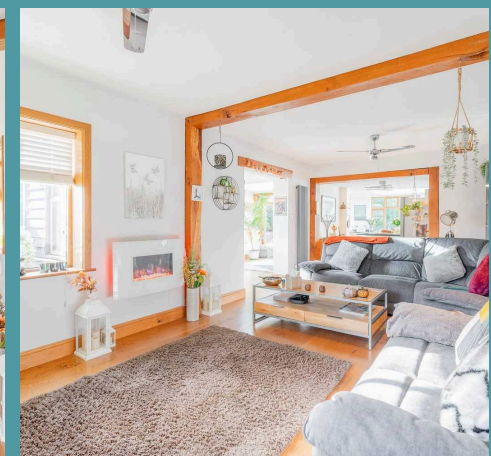
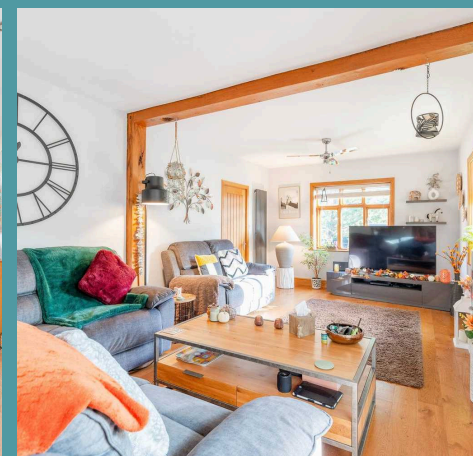
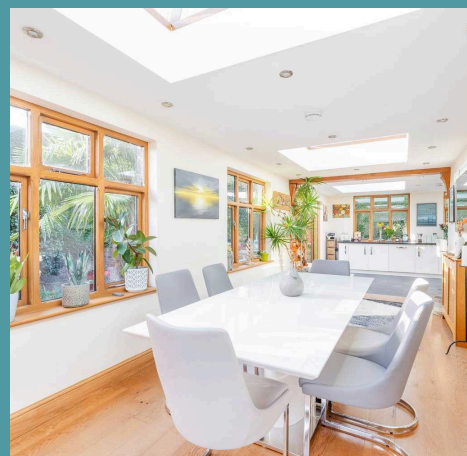
# 5 Marshgate

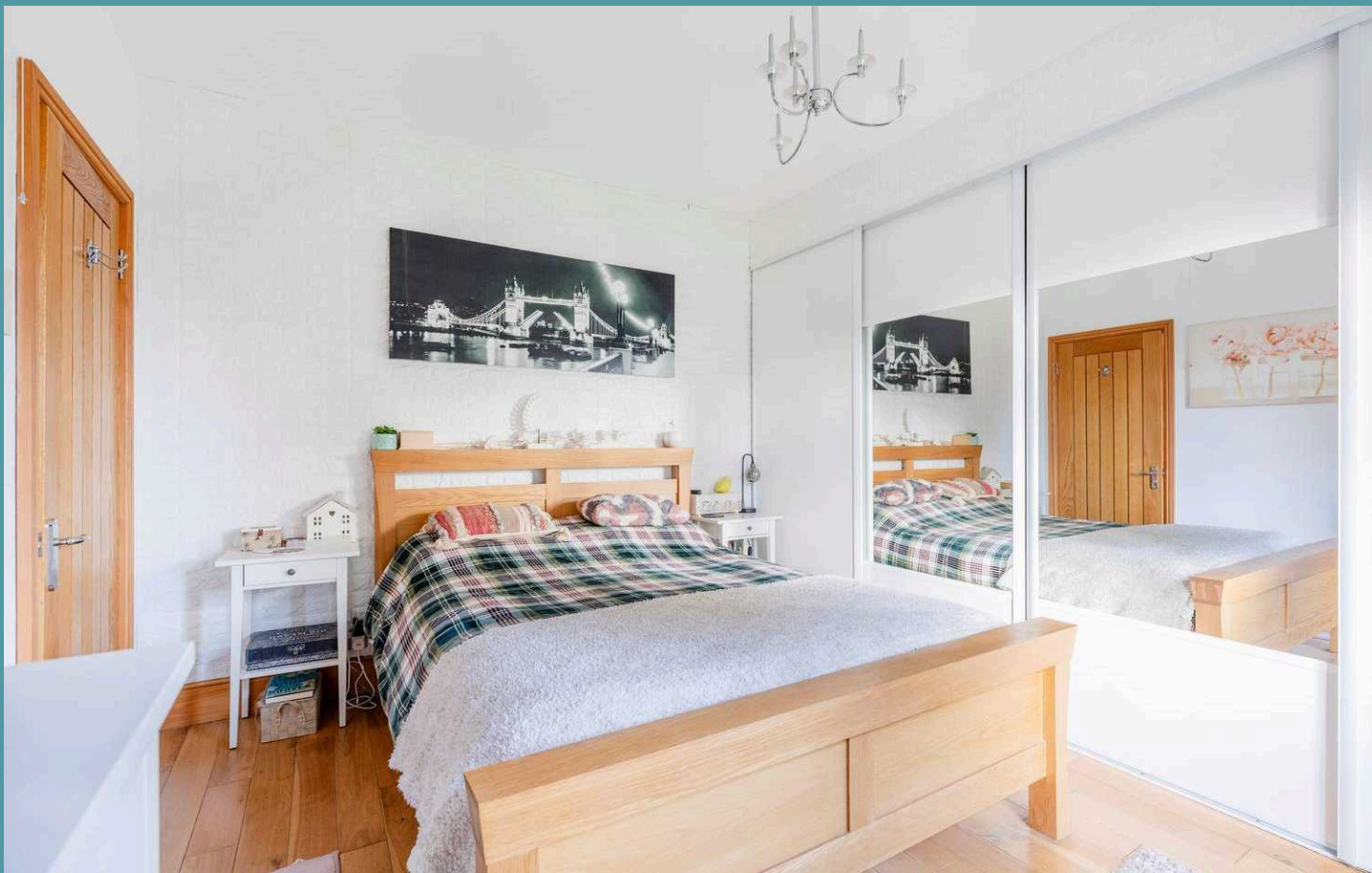
## North Walsham

This charming extended detached bungalow offers a unique opportunity to own a beautiful home with spacious and versatile accommodation. The property boasts a thoughtful layout with a perfect blend of traditional charm and modern convenience. With its spacious accommodation, high-quality finishes, and convenient annexe space, this property offers a unique opportunity to create a haven that you'll be proud to call home. Don't miss the chance to acquire this home and experience all it has to offer.

### LOCATION

North Walsham is a market town located in the county of Norfolk, in the East of England. Situated about 12 miles inland from the North Sea coast, it lies in the district of North Norfolk, offering easy access to both rural and coastal areas. The town is known for its rich history, dating back to medieval times, and features a mix of traditional architecture and modern amenities. North Walsham serves as a hub for surrounding villages, providing a range of services, shops, and schools. Its central position within the Norfolk Broads area also makes it a popular base for visitors exploring the scenic landscape, wildlife, and waterway routes. With good transport links, including a railway station that connects the town to Norwich and beyond, North Walsham combines the charm of rural life with the convenience of nearby urban centers.



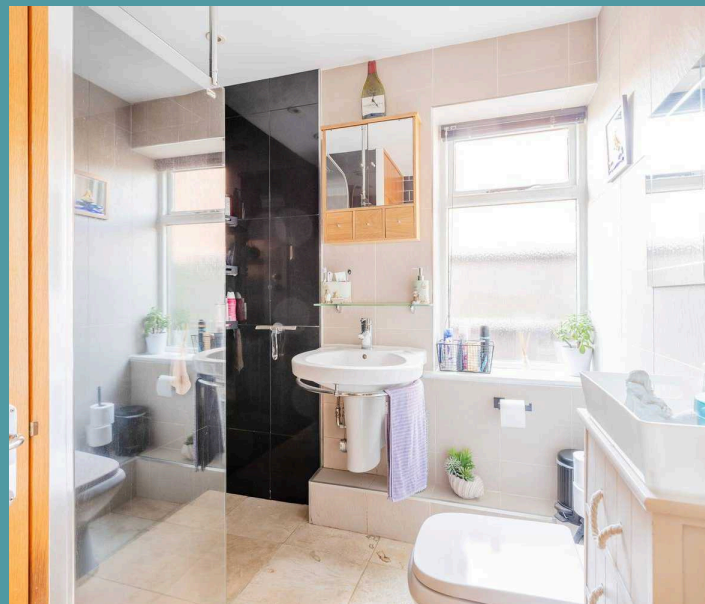
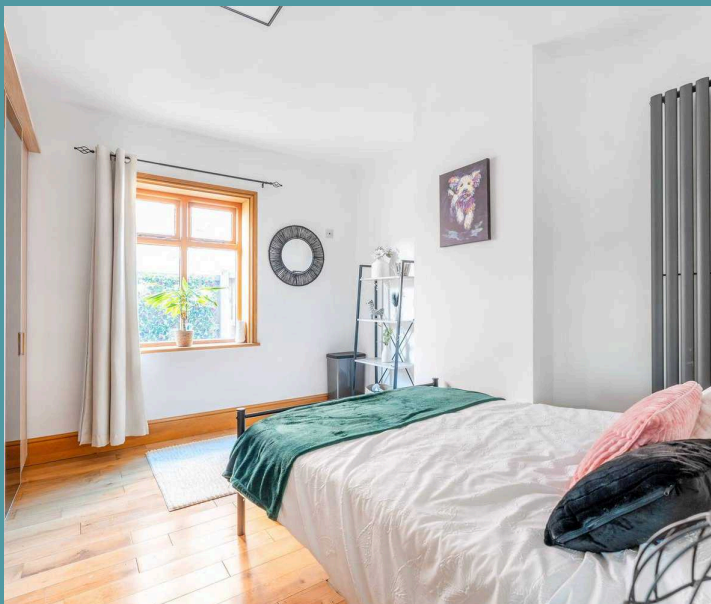


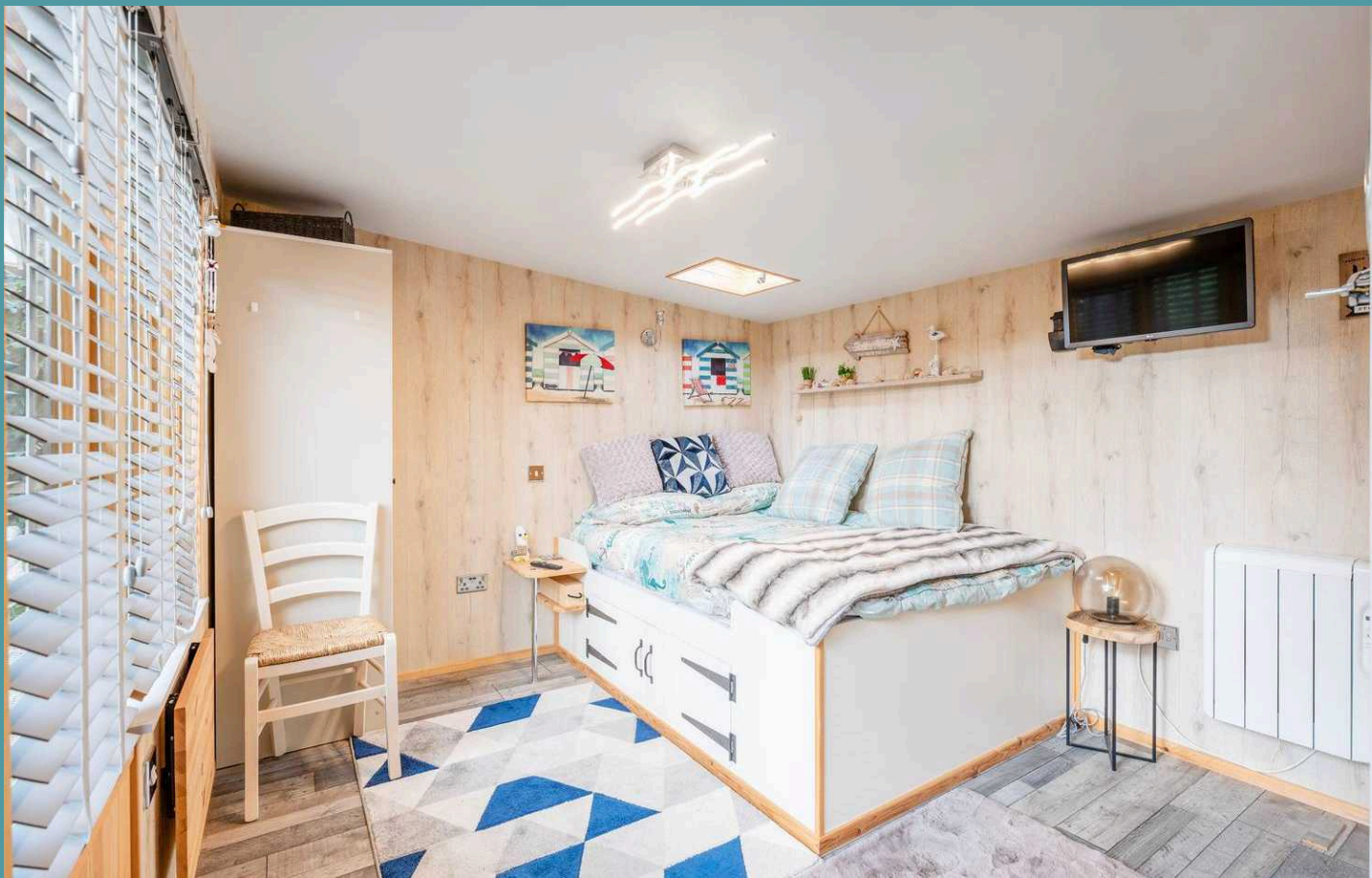
## 5 Marshgate

North Walsham

Upon entering, you are greeted by a bright and airy entrance hall, with Oak flooring and panelled Oak interior doors. Immediately capturing your attention with its warm and welcoming ambiance is the spacious sitting room, creating a cosy spot for relaxing in the evenings. At the heart of the home lies an incredible open-plan kitchen/breakfast room, opening into the dining area, ensuring effortless interaction when hosting occasions and everyday family living. It is well-equipped with high-quality units, integrated appliances and a central island to enhance your cooking experience. Offering plenty of storage and counter-top space for meal preparation. The presence of French doors and roof lantern not only draws in the natural light but also offers views of the exterior.

The property features two double bedrooms, each thoughtfully designed to offer relaxation and privacy. The front bedroom flaunts built-in wardrobes for your everyday essentials. The shower room comprises of a modern three piece, accommodating all residents in the household. The bungalow was originally configured to provide three bedrooms, and if desired the living room could be sub-divided to reinstate this third bedroom.





## 5 Marshgate

North Walsham

Adding to the allure of this property is an attached annexe, providing additional living space for guests or extended family members. The annexe includes an open-plan living/bedroom area, a kitchenette, and a shower room, offering a self-contained living space that is both practical and flexible.

Outside, the property boasts a sectioned garden, with a raised decked seating area and a laid to lawn at the front of the bungalow, bordered by planted beds and shrubbery. With the addition of a well-equipped log cabin. Overall, it is fully enclosed so you can enjoy in seclusion. A driveway provides off-road parking for residents and visitors, ensuring convenience for all.

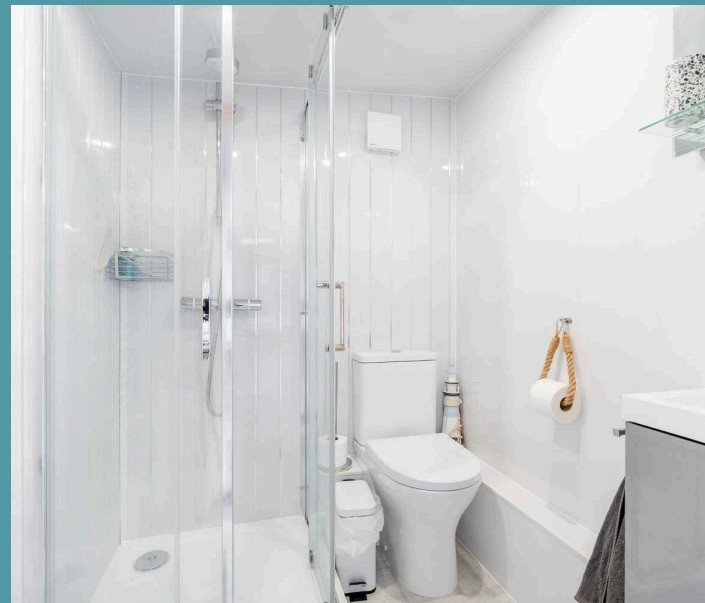
### AGENTS NOTES

We understand that this property is freehold.

Connected to mains water, electricity, gas and drainage.

Heating system - Gas central heating.

Council Tax Band: C

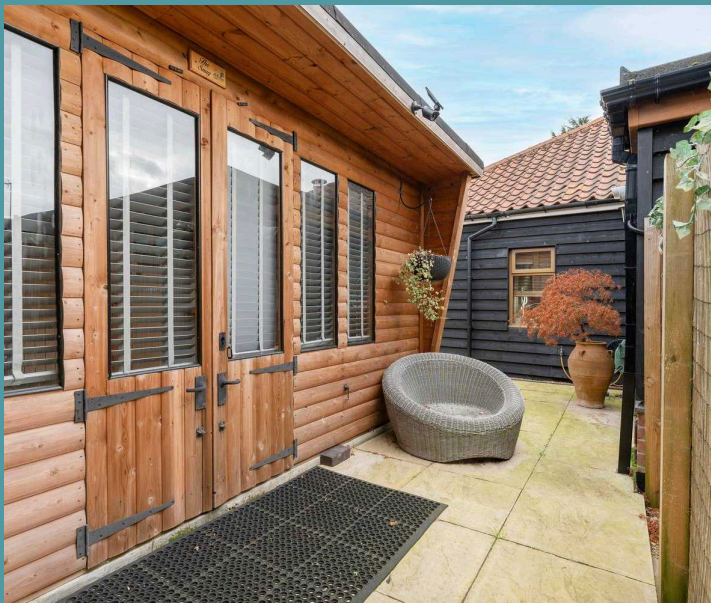




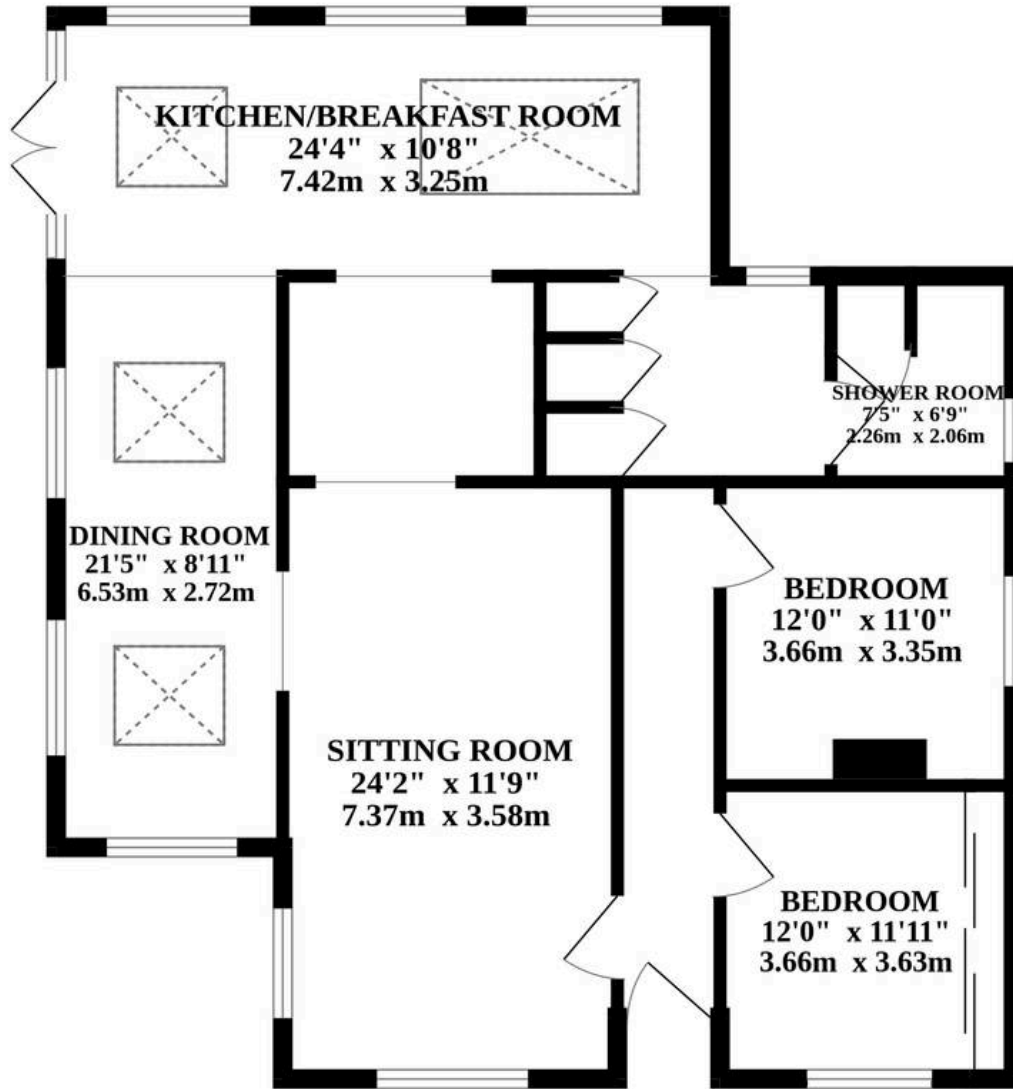
## 5 Marshgate

North Walsham

- Charming extended detached bungalow
- Beautiful home with spacious and versatile accommodation
- Incredible open-plan kitchen/breakfast room & a dining room - High quality fixtures and fittings
- Large sitting room filled with an abundance of natural light
- Two double bedrooms & a shower room
- Attached annex with an open-plan living/bedroom, kitchenette & a shower room
- Sectioned garden with a laid to lawn and a raised decked seating area
- Driveway providing off-road parking for residents and visitors
- Situated in the market town of North Walsham, within close proximity to all local amenities and natural surroundings



# GROUND FLOOR



Whilst every attempt has been made to ensure the accuracy of the floorplan contained here, measurements of doors, windows, rooms and any other items are approximate and no responsibility is taken for any error, omission or mis-statement. This plan is for illustrative purposes only and should be used as such by any prospective purchaser. The services, systems and appliances shown have not been tested and no guarantee as to their operability or efficiency can be given.  
Made with Metropix ©2024