



Gainsborough Road, London
Guide Price £1,750,000

WHITMAN & CO.

SALES · LETTINGS · COMMERCIAL



A bright and spacious four-bedroom period family home located in the sought-after Bedford Park conservation area, offering an excellent balance of living and entertaining space alongside a beautifully landscaped 53' garden.

The property features four generously sized double bedrooms, two modern bathrooms, a 26' through reception room, a bespoke 26' kitchen/breakfast room, a convenient cloakroom, and a cellar for additional storage.

Ideally situated on a tree-lined residential street, the house benefits from close proximity to Stamford Brook and Turnham Green stations, as well as the vibrant selection of shops, bars, and restaurants on Chiswick High Road and Turnham Green Terrace.



Gainsborough Road, W4

Approximate Gross Internal Area

169.99 sq m / 1830 sq ft

(Including Eaves Storage & Excluding Summer House)

Eaves Storage

6.33 sq m / 68 sq ft

Summer House

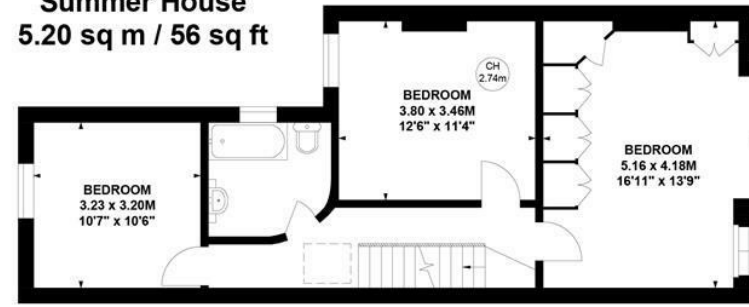
5.20 sq m / 56 sq ft

Key :

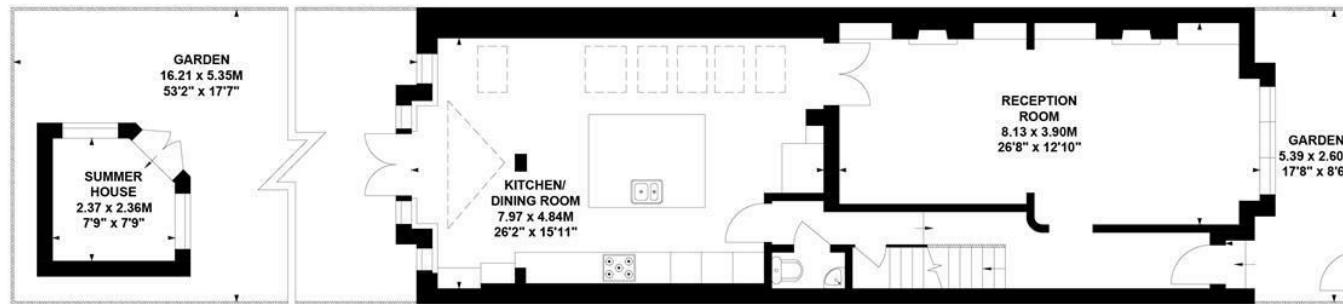
CH - Ceiling Height



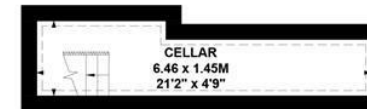
Second Floor



First Floor



Ground Floor



Lower Ground Floor

Not to scale, for guidance only and must not be relied upon as a statement of fact.

All measurements and areas are approximate only

- 53' landscaped garden
- Four double bedrooms/two bathrooms
- Well presented

- Bedford Park Conservation area
- Sought after tree-lined residential road
- Fantastic transport links

Tenure - Freehold
 Local Authority - Hounslow
 Council Tax - Band G

