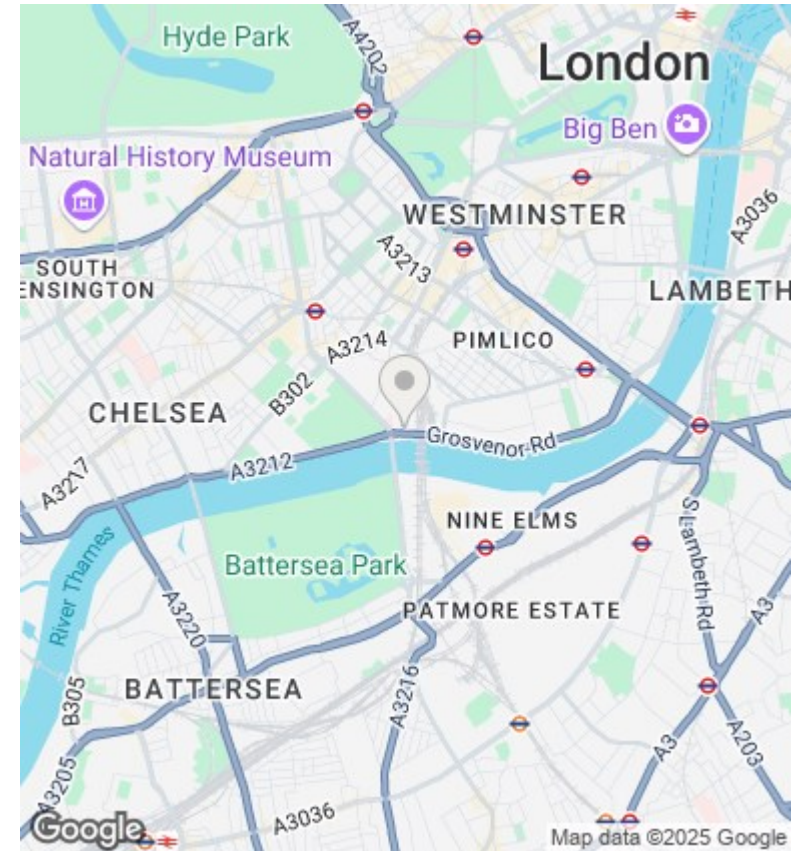
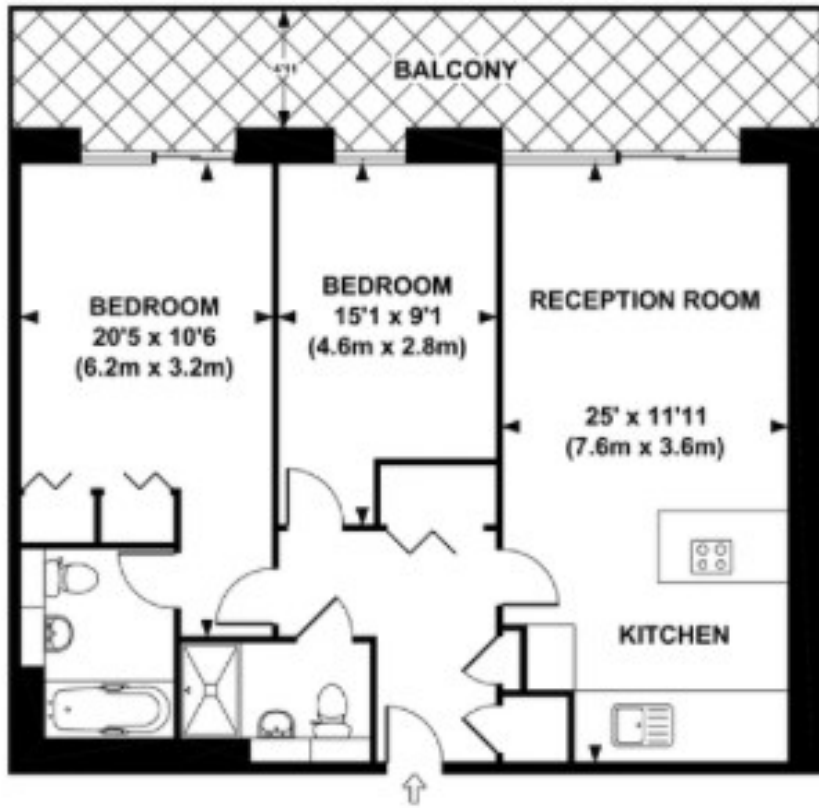




Bramah House , Gatliff Road , Grosvenor Waterside SW1W 8DQ

£4,333 Per Month

- 24 Hour concierge
- west facing
- views of Dock , River and Chelsea Bridge
- walking distance to Sloane Square and Victoria
- gym and spa
- private balcony
- on site food shop Sainsbury's
- laundry service
- under floor heating and air cooling
- on site restaurant



Viewings

Viewings by arrangement only.
Call 02077225022 to make an appointment.

Council Tax Band

C

EPC Rating:

Energy Efficiency Rating		
	Current	Potential
<i>Very energy efficient - lower running costs</i>		
(92 plus) A		
(81-91) B		
(69-80) C		
(55-68) D		
(39-54) E		
(21-38) F		
(1-20) G		
<i>Not energy efficient - higher running costs</i>		
England & Wales	EU Directive 2002/91/EC	