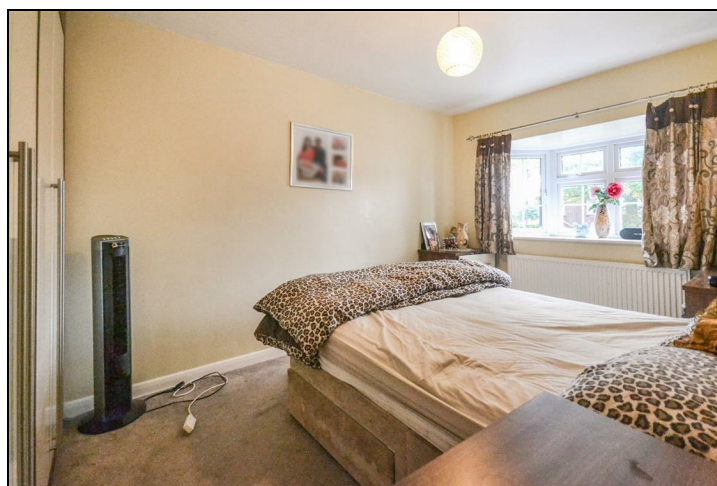


Grand Drive Raynes Park, SW20 9EB

£2,450 PCM



Well presented THREE bedroom house with a PRIVATE GARDEN, OFF STREET PARKING and GARAGE. Situated a 10 minute walk away from RAYNES PARK STATION (South West Trains) and with convenient bus links to both Wimbledon Station and Morden Station (Northern Line). It consists of a double sized reception /dining room with wood flooring leading onto a well-equipped kitchen with appliances including dishwasher, and downstairs W/C. Upstairs has two double bedrooms with ample storage, a further study/child's room and a smart family bathroom. EPC D. Council tax band E.



- Three Bedroom House
- Newly Decorated
- Private Garden
- Garage
- Downstairs W/C
- One Months Rent in Advance
- Five Weeks Security Deposit
- Holding Deposit = One Months Rent
- EPC Band D
- Council Tax Band E

