



Guide Price: £400,000-£425,000. This 4-bedroom house offers a well-designed and versatile living environment. With its convenient ground floor WC, kitchen and utility room, two reception rooms and garden room, the property provides ample space for comfortable living and entertaining. The four bedrooms, including a master with en suite, cater to the needs of a growing family or individuals seeking extra space. This property is a wonderful blank canvas ready to make your own!

LOCATION

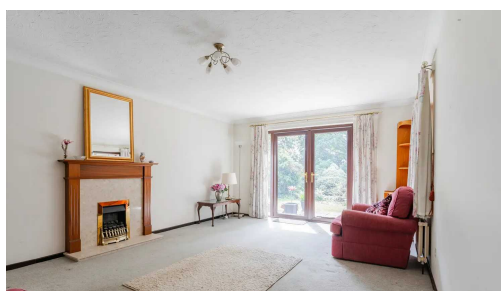
Taverham is a picturesque village situated in the county of Norfolk. Nestled in the beautiful countryside, Taverham offers a tranquil and idyllic setting for residents and visitors alike. With its charming blend of rural landscapes and modern amenities, the village provides a peaceful escape from the hustle and bustle of city life. The village centre features a range of local shops, including convenience stores, independent retailers, and quaint boutiques, catering to the daily needs of its residents. There are also cosy cafes, traditional pubs, and restaurants offering a variety of dining options and a warm community atmosphere. For families,



Guide Price: £400,000-£425,000. This 4-bedroom house offers a well-designed and versatile living environment. With its convenient ground floor WC, kitchen and utility room, two reception rooms and garden room, the property provides ample space for comfortable living and entertaining. The four bedrooms, including a master with en suite, cater to the needs of a growing family or individuals seeking extra space. This property is a wonderful blank canvas ready to make your own!

LOCATION

Taverham is a picturesque village situated in the county of Norfolk



Guide Price: £400,000-£425,000. This 4-bedroom house offers a well-designed and versatile living environment. With its convenient ground floor WC, kitchen and utility room, two reception rooms and garden room, the property provides ample space for comfortable living and entertaining. The four bedrooms, including a master with en suite, cater to the needs of a growing family or individuals seeking extra space. This property is a wonderful blank canvas ready to make your own!

LOCATION

Taverham is a picturesque village situated in the county of Norfolk. Nestled in the beautiful countryside, Taverham offers a tranquil and idyllic setting for residents and visitors alike. With its charming blend of rural landscapes and modern amenities, the village provides a peaceful escape from the hustle and bustle of city life. The village centre features a range of local shops, including convenience stores, independent retailers, and quaint boutiques, catering to the daily needs of its residents. There are also cosy cafes, traditional pubs, and restaurants offering a variety of dining options and a warm community atmosphere. For families, Taverham offers excellent educational facilities, including primary schools and a high school, ensuring convenient access to quality education. The village also benefits from community centers and recreational facilities, hosting various events and activities throughout the year. Taverham maintains good connectivity to nearby towns and cities. The village enjoys convenient transport links, with regular bus services connecting it to Norwich.

THE PROPERTY

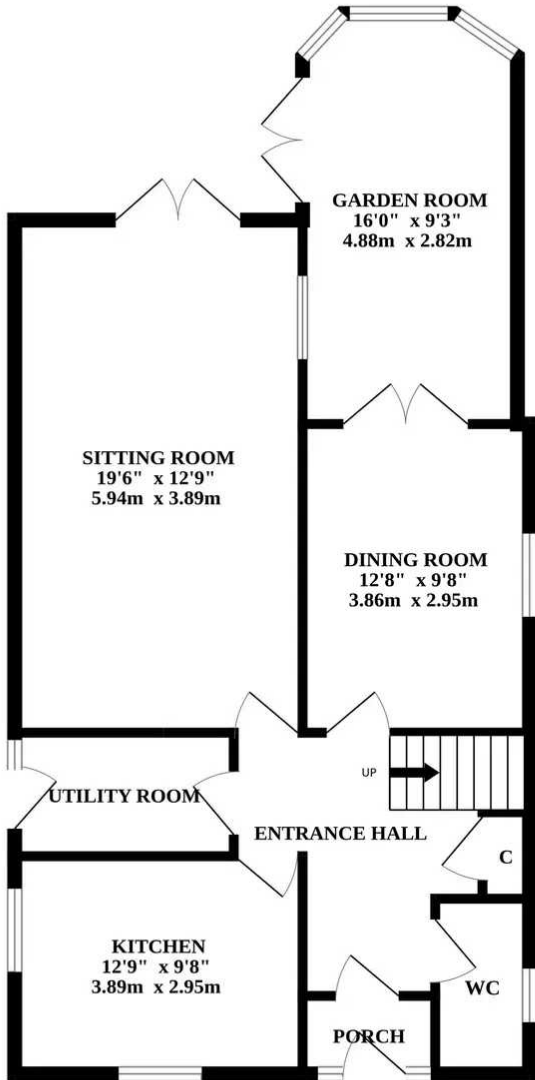
Welcome to this impressive 4-bedroom house, offering spacious and well-designed living spaces. As you enter, you are greeted by an inviting entrance hall that sets the tone for the rest of the property. The ground floor features a convenient WC, providing an additional bathroom facility for residents and guests.

The kitchen boasts lots of potential and provides a functional space with sufficient storage options. Adjacent to the kitchen is a utility room, offering practicality for laundry needs and additional storage. The sitting room provides a cosy and comfortable area for relaxation, while the dining room offers a formal space for entertaining guests. The garden room is a delightful addition, providing a bright and airy space to enjoy the surrounding outdoor views.

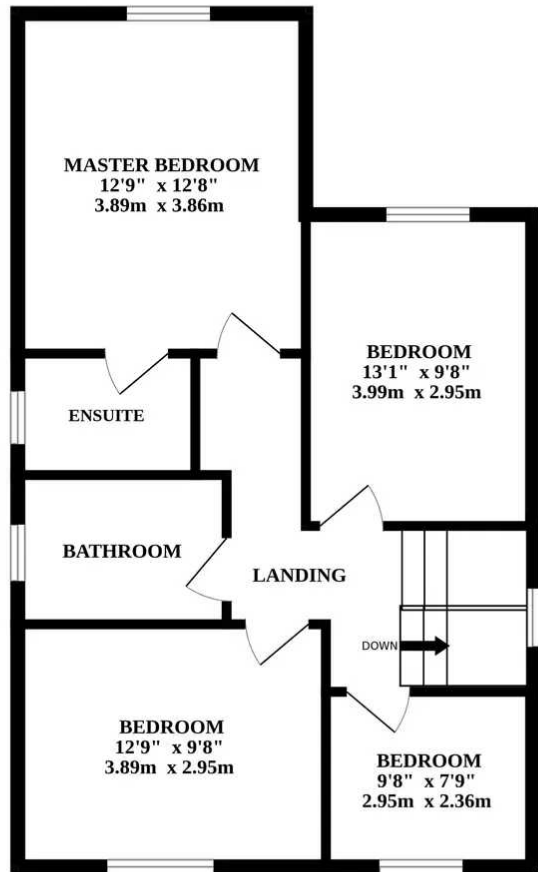
Upstairs, the house offers four well-proportioned bedrooms. The master bedroom features an en suite bathroom, providing a private and luxurious retreat. The remaining three bedrooms are spacious and versatile, offering plenty of room for rest and relaxation. The family bathroom is well-appointed with modern fixtures and fittings, ensuring convenience and style.



GROUND FLOOR



1ST FLOOR



Whilst every attempt has been made to ensure the accuracy of the floorplan contained here, measurements of doors, windows, rooms and any other items are approximate and no responsibility is taken for any error, omission or mis-statement. This plan is for illustrative purposes only and should be used as such by any prospective purchaser. The services, systems and appliances shown have not been tested and no guarantee as to their operability or efficiency can be given.
Made with Metropix ©2023

You can include any text here. The text can be modified upon generating your brochure.

You can include any text here. The text can be modified upon generating your brochure.

