



Hampstead Way, Hampstead Garden Suburb, NW11

Freehold

£1,585,000



800 finchley road, hampstead garden suburb, london, nw11 7tj

telephone 020 8458 5000 facsimile 020 8209 2068

email sales@litchfields.com web litchfields.com

offices also in crouch end & highgate

A pretty 5 bedroom Grade II Listed house placed overlooking a lawned communal square situated within close proximity to the shops and transport at Temple Fortune. The house was designed by Geoffrey Lucas and built in approximately 1909. The property is presented in excellent internal decorative condition and benefits from a lovely rear garden and use of a communal paddock.

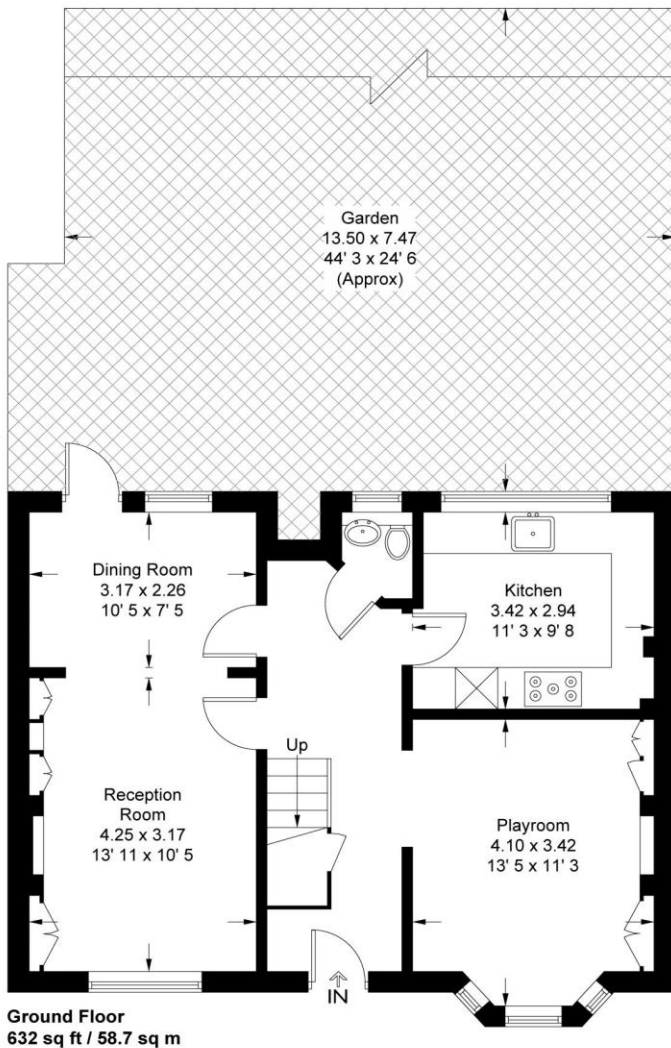
5 bedrooms | Lounge | Dining room | Family room | Kitchen | Family bathroom | En suite bathroom | Cloakroom | Rear garden



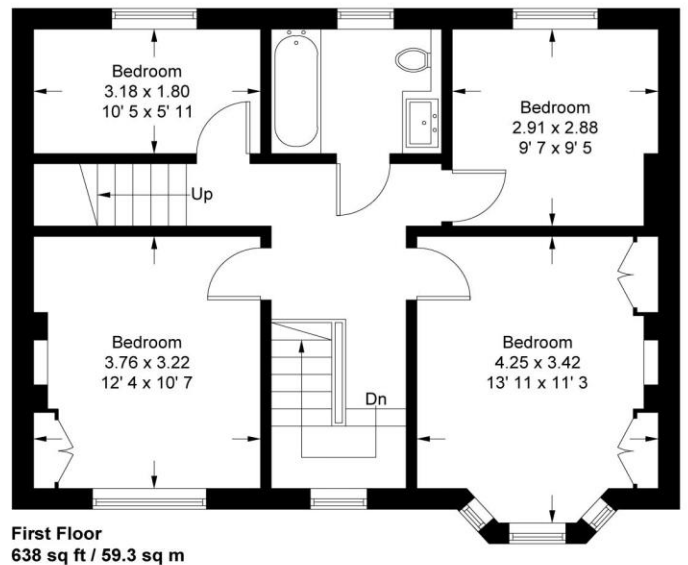
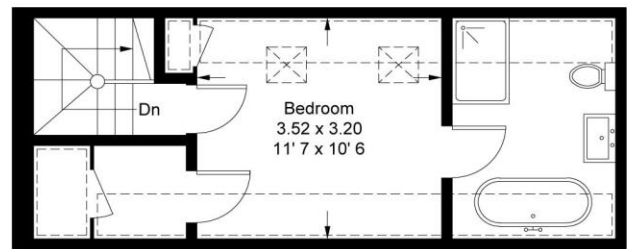


Hampstead Way

Approximate Gross Internal Area = 1456 sq ft / 135.3 sq m
 (Excluding Reduced Headroom)
 Reduced Headroom = 96 sq ft / 8.9 sq m
 Total = 1552 sq ft / 144.2 sq m



= Reduced headroom below 1.5m / 5'0



This plan is not to scale and must be used as layout guidance only. All measurements and areas are approximate and should not be relied upon to provide accurate information. This plan must not be relied upon when making property valuations, design considerations or any other such relevant decisions. We accept no responsibility or liability (whether in contract, tort or otherwise) in relation to any loss whatsoever arising from or in connection with any use of this plan or the adequacy, accuracy or completeness of it or any information within it.

Whilst every effort is made to ensure these details are accurate, all measurements given are approximate and for guidance only. We are unable to comment on the structure of the building or services and any investigations should be carried out by a qualified surveyor. We strongly advise you to ensure that all legal aspects are fully investigated by your solicitor prior to a purchase. We have not applied tests to any appliances or equipment and therefore cannot verify these are in good working order. We understand from the vendor that the fixtures and fittings listed are to be included in the sale price but these may be subject to negotiation.