

Margravine Gardens

Hammersmith, London, W6

 LAWSONRUTTER





Margravine Gardens

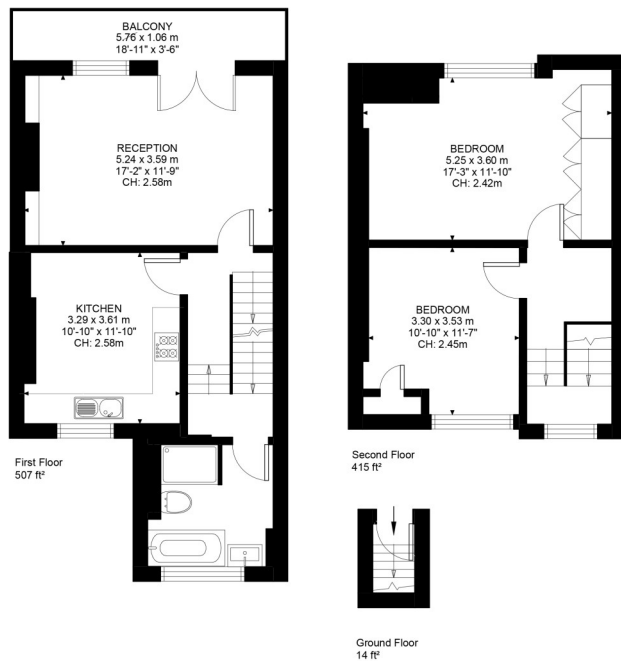
Hammersmith, London, W6

Price Guide: O.I.E.O. £725,000

A superb two double bedroom split-level period conversion flat with a spacious private 18'11 x 3'6 balcony located on a highly sought after road within a 2 – 3 minute walk to Barons Court underground station.

The flat which is well presented throughout benefits from a well fitted 11'10 x 10'10 eat in kitchen breakfast room, a larger than average 17'2 x 11'9 reception room, a stylish recently fitted bathroom suite with separate shower cubicle and two generous double bedrooms.

Margravine Gardens is considered one of the best roads in the Hammersmith/Barons Court area and offers excellent access to local transport links as well as a variety of local shops, bars and restaurants. No onward chain.



Margravine Gardens, W6
Approximate Gross Internal Area
86.98 SQ.M / 936 SQ.FT

Illustration for identification purposes only. Not to scale.
Floor Plan Drawn According To RIGS Guidelines.

All viewings by appointment through our **Hammersmith Office**:

T: 020 7385 7000
E: hammersmith@lawsonrutter.com

192 Fulham Palace Road, London W6 9PA

Superb two double bedroom split-level period conversion flat

Highly sought after road | Larger than average reception room | Eat-in kitchen/breakfast room

Spacious private balcony | Stylishly fitted bathroom | No onward chain

Close to transport & amenities | 936 Sq. Ft. (86.98 Sq. M.) Leasehold

Full Energy Performance Certificate available on

In accordance with the Property Misdescription Act 1991, we wish to emphasise that the information given in these particulars is intended to help you decide whether you wish to view this property. Whilst every care is taken to ensure the accuracy of these particulars please note that all measurements are approximate and we are, for the accuracy of other information, reliant on what the seller has provided. We strongly recommend that you rely on your own inspections and those of your advisors to establish the details of any aspects which are of particular importance. Please note that we have not undertaken any survey of the property or the appliances within it and the buyer must rely on their own investigations prior to exchange of contracts.

