

Location:

Local transport links include Acton Town tube station (Piccadilly and District Lines), Acton Central (Overground) and Acton Mainline (Elizabeth Line) as well as excellent bus services to nearby Shepherds Bush, Chiswick, and Hammersmith. The M4 and M40 motorway routes are also easily accessible.

Key points:

- One bedroom apartment
- Ground floor
- Historic building
- Access to communal gardens
- High ceilings throughout
- Long lease

Do Better:

Acton
sales@astonrowe.co.uk

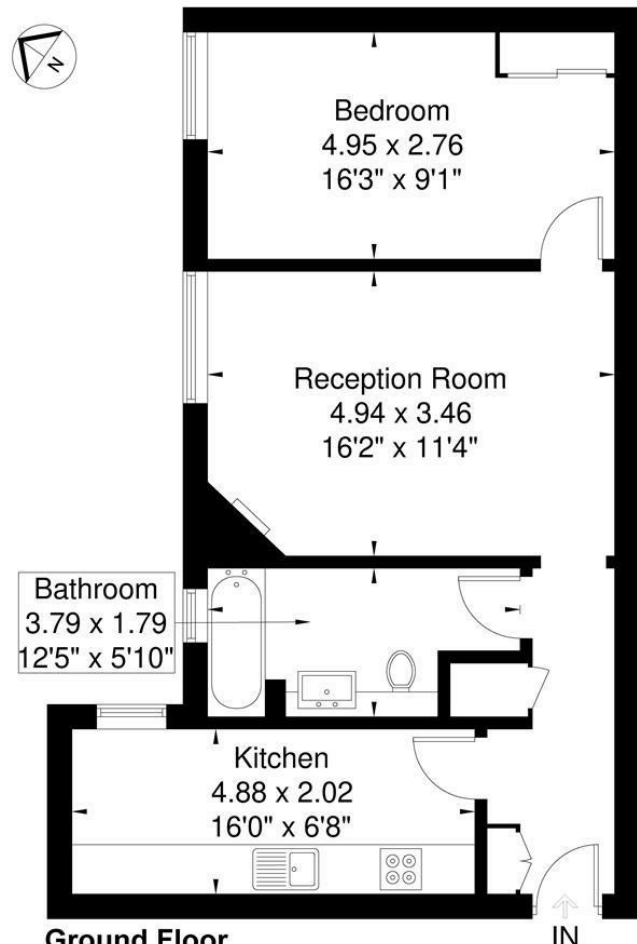
57-59 Churchfield Road,
Acton, London, W3 6AY

020 8992 3600

Aston Rowe



Acton Town Hall
Approximate Gross Internal Area = 55.0 sq m / 592 sq ft



Ground Floor
Although every attempt has been made to ensure accuracy, all measurements are approximate. The floorplan is for illustrative purposes only and not to scale.
© www.perspective.co.uk

Offers Over £375,000

Winchester Street, London W3 8UH

Energy Efficiency Rating		Current	Potential
Very energy efficient - lower running costs			
(92 plus) A			
(81-91) B			
(69-80) C			
(55-68) D			
(39-54) E			
(21-38) F			
(1-20) G			
Not energy efficient - higher running costs			
England & Wales		72	72
EU Directive 2002/91/EC			

Environmental Impact (CO ₂) Rating		Current	Potential
Very environmentally friendly - lower CO ₂ emissions			
(92 plus) A			
(81-91) B			
(69-80) C			
(55-68) D			
(39-54) E			
(21-38) F			
(1-20) G			
Not environmentally friendly - higher CO ₂ emissions			
England & Wales			
EU Directive 2002/91/EC			

- 1 Reception Rooms
- 1 Bedrooms
- 1 Bathrooms



The current owner says:

The property is in a fantastic location for the local shops, parks, schools and transport links.

A beautifully presented one-bedroom apartment, circa 592 sq.ft, set within the iconic Old Town Hall development in Acton.

The property is made up of an eat-in-kitchen and separate living area, with large sash windows. The bedroom is well proportioned and fitted with spacious wardrobes. The property offers access to communal gardens.

Acton Town Hall Apartments is moments away from the wide array of shops and restaurants Acton has to offer on the High Street and Churchfield Road.

Local transport links include Acton Town tube station (Piccadilly and District Lines), Acton Central (Overground) and Acton Mainline (Elizabeth Line) as well as excellent bus services to nearby Shepherds Bush, Chiswick, and Hammersmith. The M4 and M40 motorway routes are also easily accessible.

What's better:

A beautifully presented one-bedroom apartment, circa 592 sq.ft, set within the iconic Old Town Hall development in Acton.

