

**SW19**

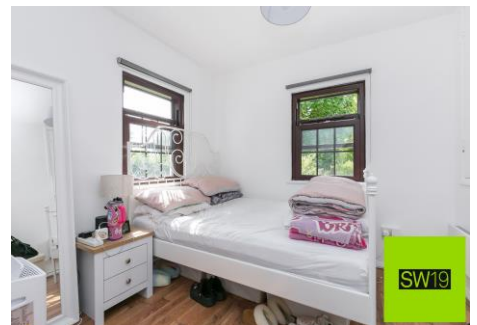
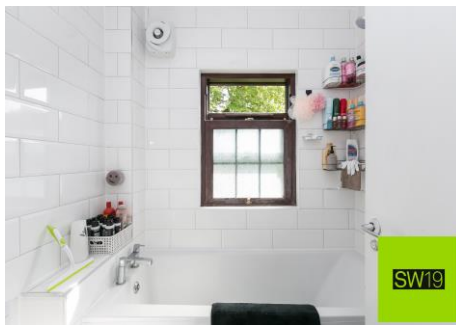
*'it's all in the postcode...'*



## High Street Colliers Wood

**£295,000**

- First Floor One Double Bedroom
- In the heart of Colliers Wood
- Allocated parking
- Close to local transport
- Close to all amenities



020 8544 2828

Wimbledon: Wimbledon Park: Colliers Wood

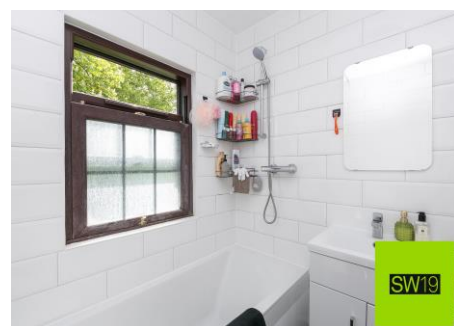
[www.SW19.com](http://www.SW19.com)

SW19 Estate Agents Ltd. Is registered in England & Wales No. 05508737

*'it's all in the postcode...'*



SW19 is proud to present this one bedroom first floor apartment right in the heart of Colliers Wood. Tucked away behind the trees and next to Wandle park this property also benefits from allocated parking and a long lease. A perfect first home or a rental investment.



020 8544 2828

Wimbledon: Wimbledon Park: Colliers Wood

[www.SW19.com](http://www.SW19.com)

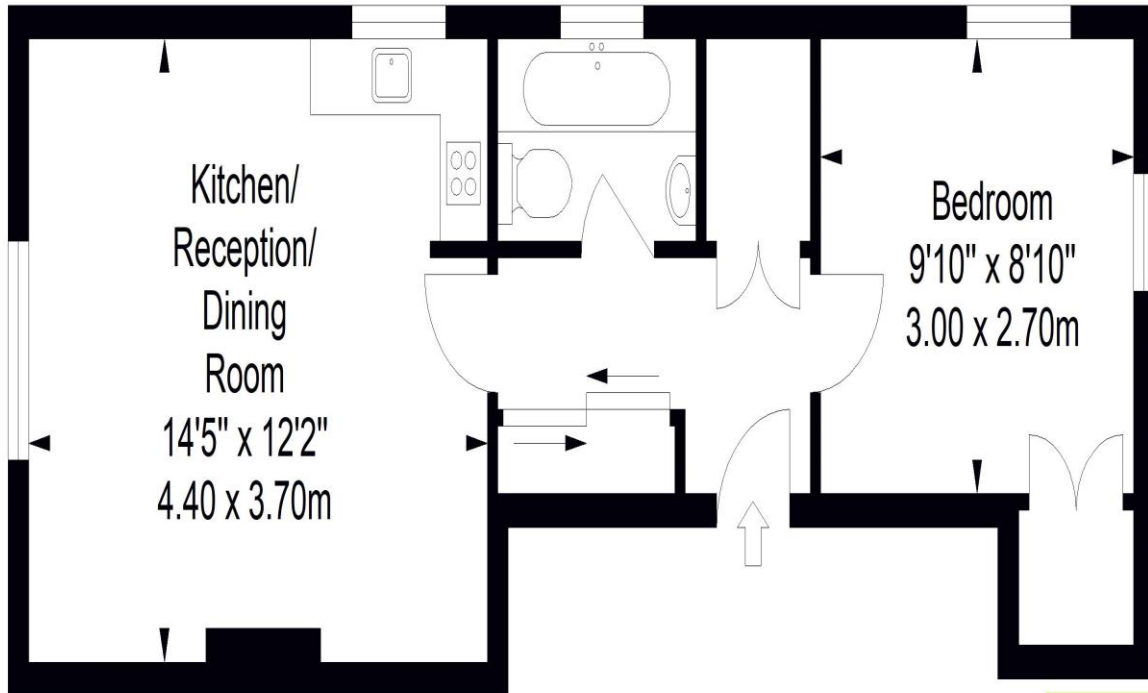
SW19 Estate Agents Ltd. Is registered in England & Wales No. 05508737

*'it's all in the postcode...'*

# Millers Mead

Approximate Gross Internal Area

366 sq ft / 34.01sq m



First Floor

SW19

ILLUSTRATION FOR IDENTIFICATION PURPOSES ONLY

ALL MEASUREMENTS ARE MAXIMUM, AND INCLUDE WINDOW BAYS AND WARDROBES WHERE APPLICABLE  
THIS PLAN MUST NOT BE REPRODUCED BY ANY OTHER PERSON WITHOUT PERMISSION

These particulars are for guidance only and should not be relied upon as a statement or representation of fact. All measurements given are approximate only and should not be relied upon for ordering carpets, equipment etc. Purchasers should satisfy themselves by inspection or otherwise as to the accuracy of the statements contained within. Neither SW19 estate agents ltd or related companies or their employees can confirm structural conditions of the property or that any appliances or other facilities are in working order. Purchasers are strongly recommended to arrange their own survey.

020 8544 2828

Wimbledon: Wimbledon Park: Colliers Wood

[www.SW19.com](http://www.SW19.com)

SW19 Estate Agents Ltd. Is registered in England & Wales No. 05508737

*'it's all in the postcode...'*