



58 Northfields, Norwich

£230,000 - £240,000 Leasehold

Set within a prime location, well-connected to the University, Hospital and city centre. A charming three bedroom maisonette offering a private garden, permit parking, spacious lounge, well-equipped kitchen and much more. Situated close to amenities, schools, parks, shops and close to public transport links. Ideal for first-time buyers.

The popular postcode of NR4 is extremely sought-after for its range of amenities available such as a range of supermarkets, shops, pubs, parks, garden centres and a great catchment area for schooling. Only a short drive into the city centre and well connected to main routes such as the A140 and A146. Families will find great schooling options nearby, making this address a well-rounded choice for all.



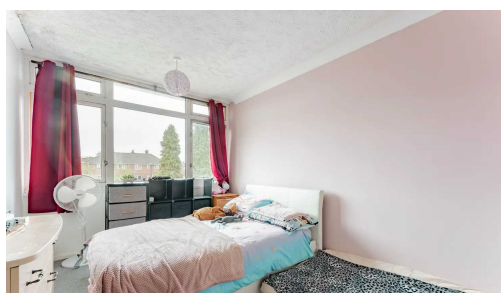
AGENTS NOTE

We understand the property will be sold leasehold and connected to all mains services.

Ground rent - £10 P/A.

Maintenance fee - £335.

Council Tax band: A

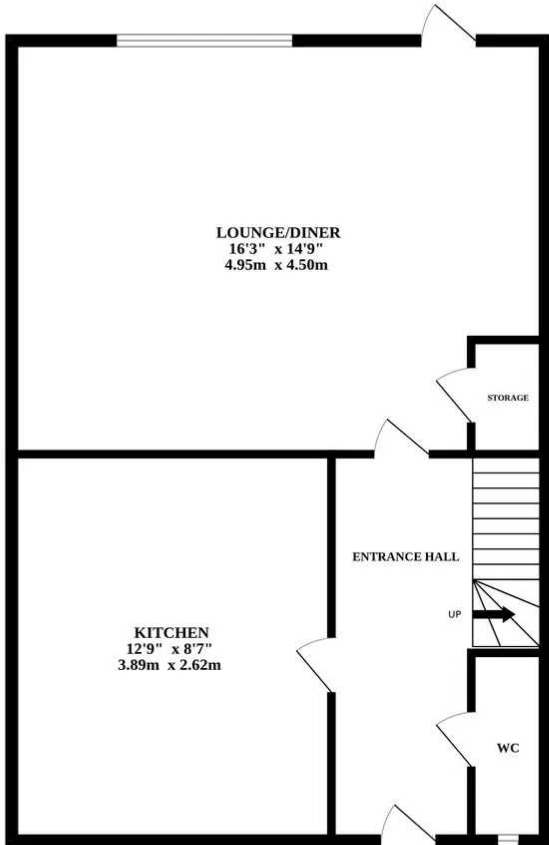


Presenting this charming three bedroom maisonette, a perfect opportunity for first-time buyers seeking a comfortable home in the highly sought-after area of Eaton. Boasting a private garden and residents permit parking, this residence offers both convenience and tranquillity.

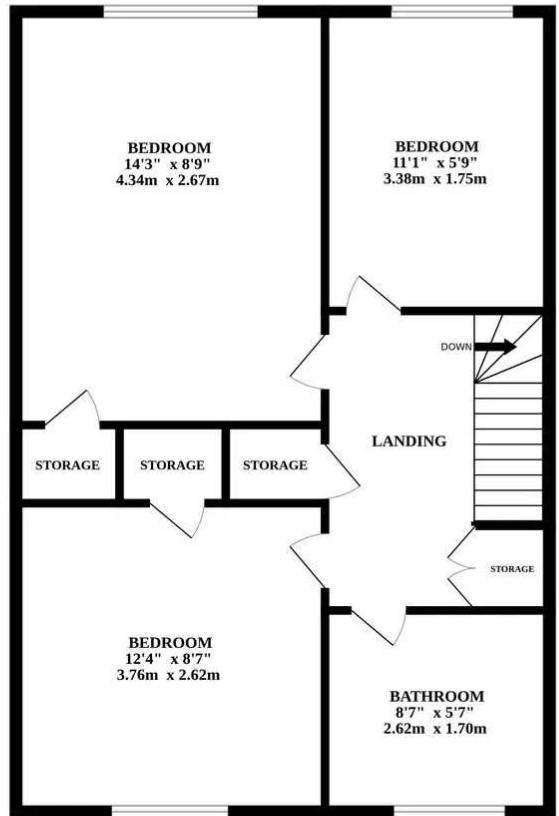
The property features a sizeable lounge, creating a bright and airy ambience throughout. Positioned for ease, residents will enjoy quick access to the University, Norfolk & Norwich Hospital, and the city centre, making daily commutes effortless. Situated a short walk from Eaton Park and offering scenic walks around the UEA Lake, this home provides ample opportunities for outdoor recreation. Featuring a sizeable lounge, a well-equipped kitchen, a family bathroom and three bedrooms. This home seamlessly combines practicality and leisure, offering a comfortable living space ideal for those seeking a vibrant city lifestyle with a touch of nature. Experience the best of city living and serenity in this lovely maisonette.



GROUND FLOOR



1ST FLOOR



Whilst every attempt has been made to ensure the accuracy of the floorplan contained here, measurements of doors, windows, rooms and any other items are approximate and no responsibility is taken for any error, omission or mis-statement. This plan is for illustrative purposes only and should be used as such by any prospective purchaser. The services, systems and appliances shown have not been tested and no guarantee as to their operability or efficiency can be given.
Made with Metropix ©2024

