



Faithfields Main Road, Little Fransham

In Excess of £250,000

Faithfields Main Road

Little Fransham, Dereham

Situated in the charming village of Little Fransham, this impeccably presented 3-bedroom semi-detached house offers a rare opportunity to acquire a modern and energy-efficient home in a wonderful countryside setting with captivating field views. Boasting three well-proportioned double bedrooms, this three-storey townhouse has been meticulously renovated by its current owners to provide a stylish and neutral living space, perfect for a growing family or those seeking a comfortable home designed for modern living.

Tenure: Freehold

EPC Energy Efficiency Rating: C

EPC Environmental Impact Rating: B





Faithfields Main Road

Little Fransham, Dereham

Situated in the charming village of Little Fransham, this impeccably presented 3-bedroom semi-detached house offers a rare opportunity to acquire a modern and energy-efficient home in a wonderful countryside setting with captivating field views. Boasting three well-proportioned double bedrooms, this three-storey townhouse has been meticulously renovated by its current owners to provide a stylish and neutral living space, perfect for a growing family or those seeking a comfortable home designed for modern living.

Location

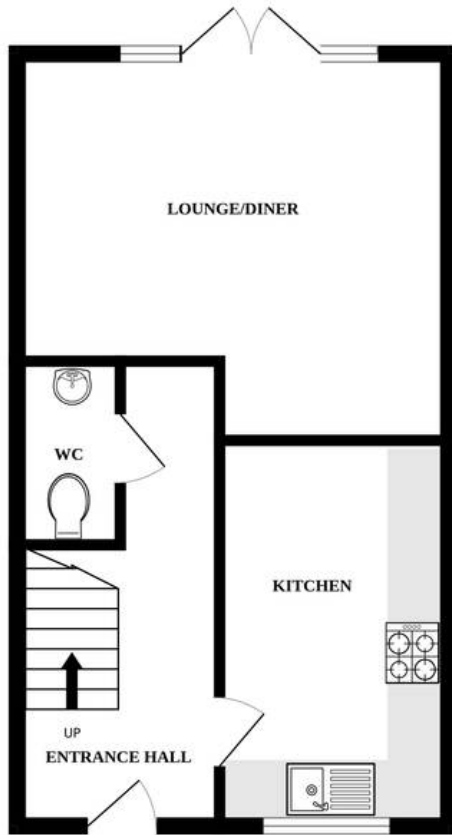
Little Fransham is a small village in Norfolk, England, situated approximately 6 miles east of Swaffham and 20 miles west of Norwich. Nestled along the A47, it provides easy access to nearby towns and cities while retaining a peaceful, rural character. The village is part of the Breckland district and is surrounded by scenic farmland and countryside, making it a tranquil setting for residents. Little Fransham is known for its historic All Saints Church and its proximity to local amenities, including shops and pubs in neighboring villages. The area is popular with those seeking a quiet, village lifestyle with the convenience of nearby urban centers.

The Property

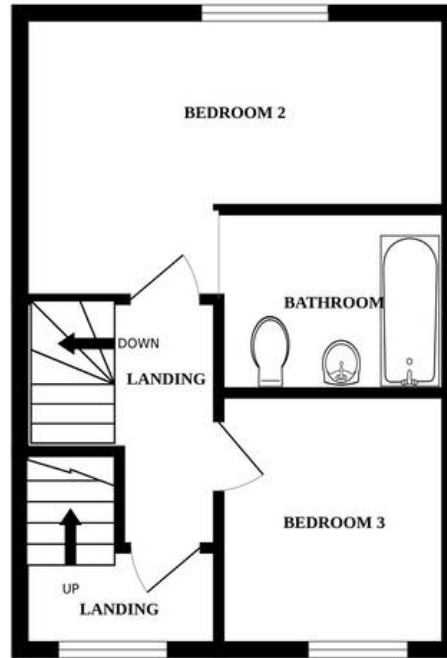
Upon stepping inside, you are greeted by the striking LVT herringbone flooring that seamlessly flows throughout the property, creating a sense of elegance. The eco-friendly features of this property are not to be overlooked, with solar panels



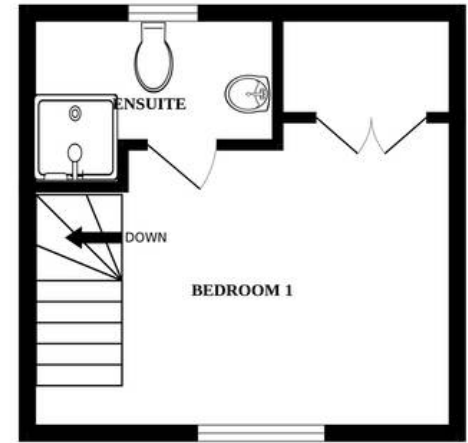
GROUND FLOOR



1ST FLOOR



2ND FLOOR



Whilst every attempt has been made to ensure the accuracy of the floorplan contained here, measurements of doors, windows, rooms and any other items are approximate and no responsibility is taken for any error, omission or mis-statement. This plan is for illustrative purposes only and should be used as such by any prospective purchaser. The services, systems and appliances shown have not been tested and no guarantee as to their operability or efficiency can be given.
Made with Metropix ©2024