



24 Gilpins Ride, Dereham
£230,000

24 Gilpins Ride

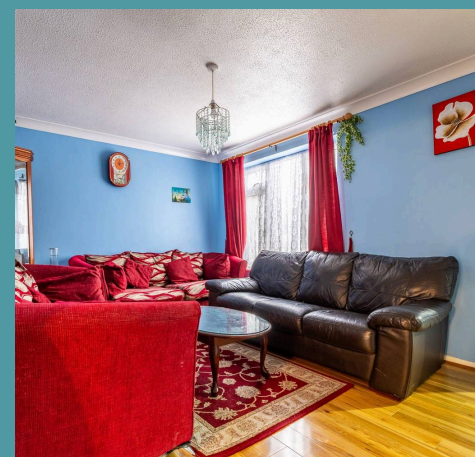
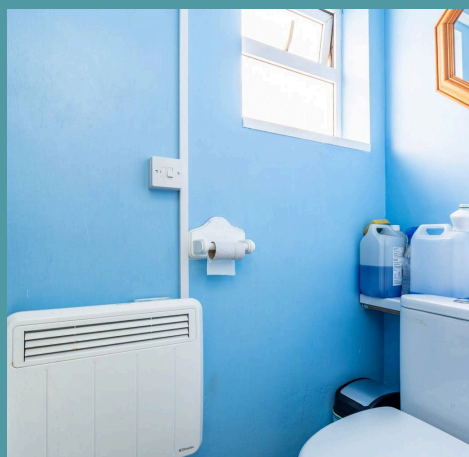
Dereham

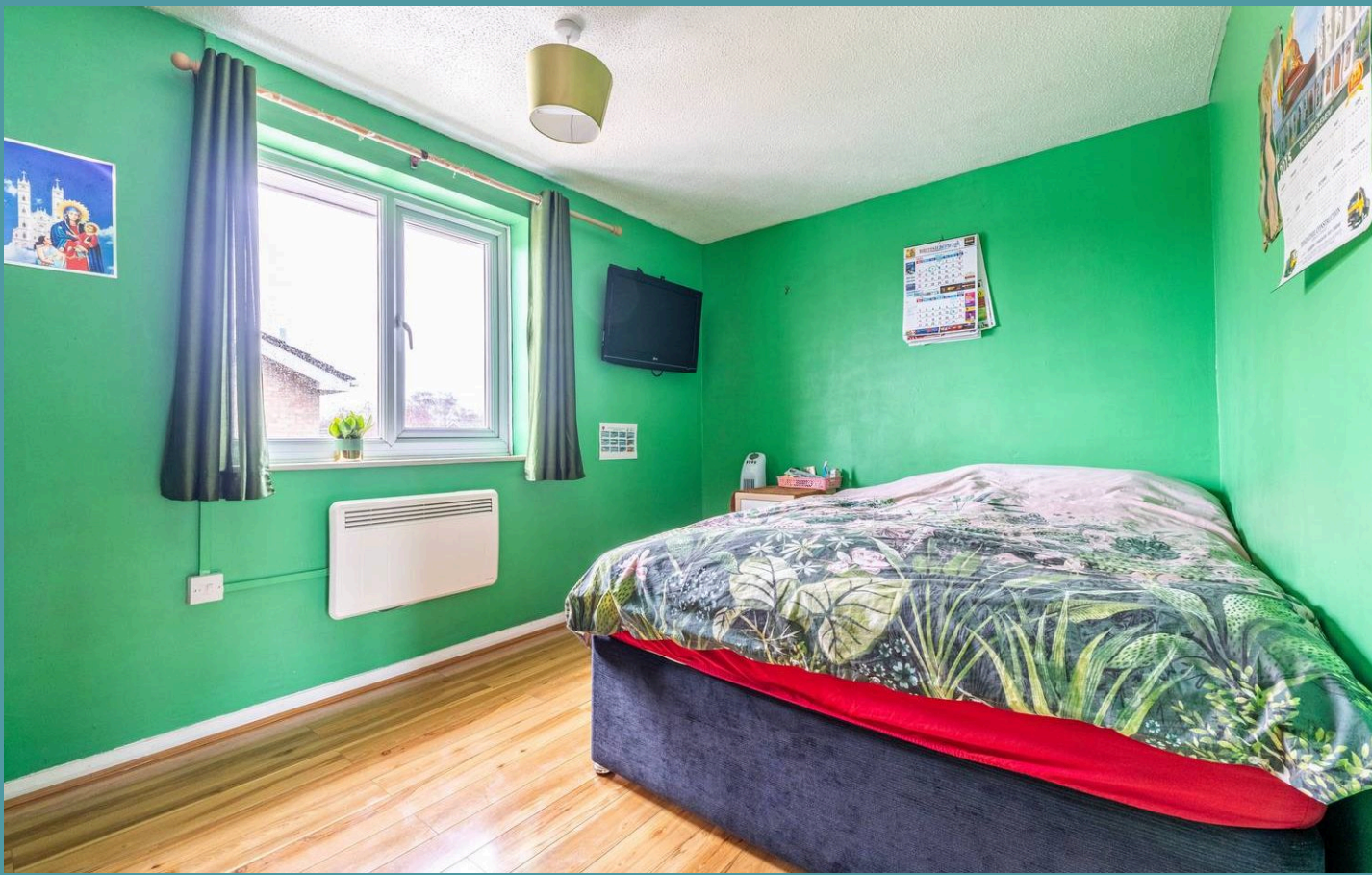
A versatile home offering walking distance to amenities and practical living spaces, this three-bedroom house in Dereham is designed for comfort. The entryway includes a useful WC and leads into a spacious sitting room, ready for your personal touch with ample room for furnishings.

The kitchen diner features wood-look cabinetry, generous storage and a dining area perfect for everyday meals or casual gatherings. While upstairs offers three well-sized bedrooms, providing flexibility for a small family or couples, alongside a three-piece bathroom. The rear garden is fully laid with patio, ideal for those seeking a low-maintenance outdoor space, while off-road parking at the front adds to the home's practicality.

The Location

Within walking distance to the town centre, this property is in a great location within Dereham. There are supermarkets and a pub close by, as well as having more amenities within the town centre, including more shops, pharmacies, doctor's surgery, dentists, cinema, bowling alley and leisure centre, as well as pubs and restaurants, and schools for all ages. There is easy access to the A47, and is on the edge of the town giving it a quieter feel whilst having amenities on your doorstep.





24 Gilpins Ride

Dereham

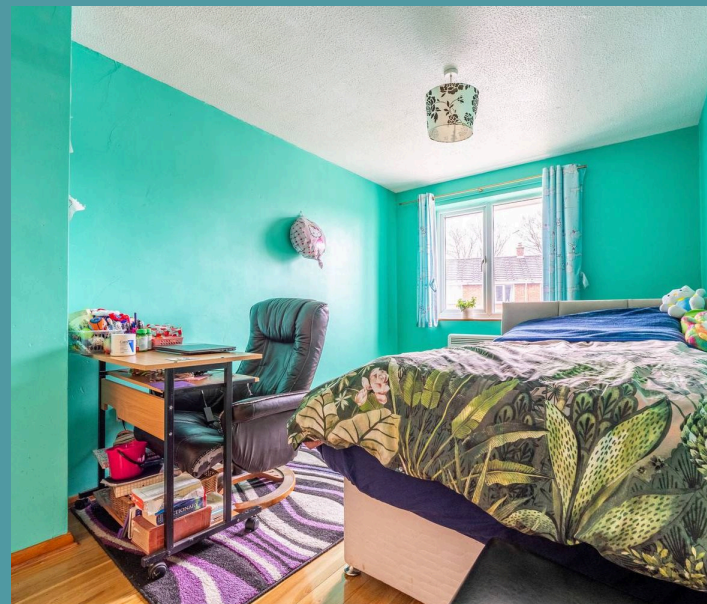
Gilpins Ride

This three-bedroom house in Dereham offers a warm welcome with its entryway, thoughtfully paired with a useful WC for added convenience.

The entrance flows seamlessly into a vibrant sitting room, boasting ample space for your chosen furnishings. While already inviting, this room provides the freedom to create a look that suits your personal style, whether that's cozy, bold or neutral. It's a versatile space ready to reflect your taste.

The kitchen diner offers an ideal setup for daily living and mealtime gatherings. With wood-look cabinetry and generous storage, it's a practical area for your cooking essentials.

Adjacent to the kitchen is a dining area that's perfectly sized for everyday meals, keeping functionality and comfort front and center.





24 Gilpins Ride

Dereham

Upstairs, the property comprises three good-sized bedrooms, providing flexibility for a small family or couples looking to make the most of the space. The three-piece suite bathroom caters to your self-care needs. Outside, the rear garden is designed with ease in mind, featuring a fully laid patio ideal for those who prefer no upkeep. At the front, off-road parking ensures convenience with space for your vehicles, making this property both practical and appealing.

Agents Note

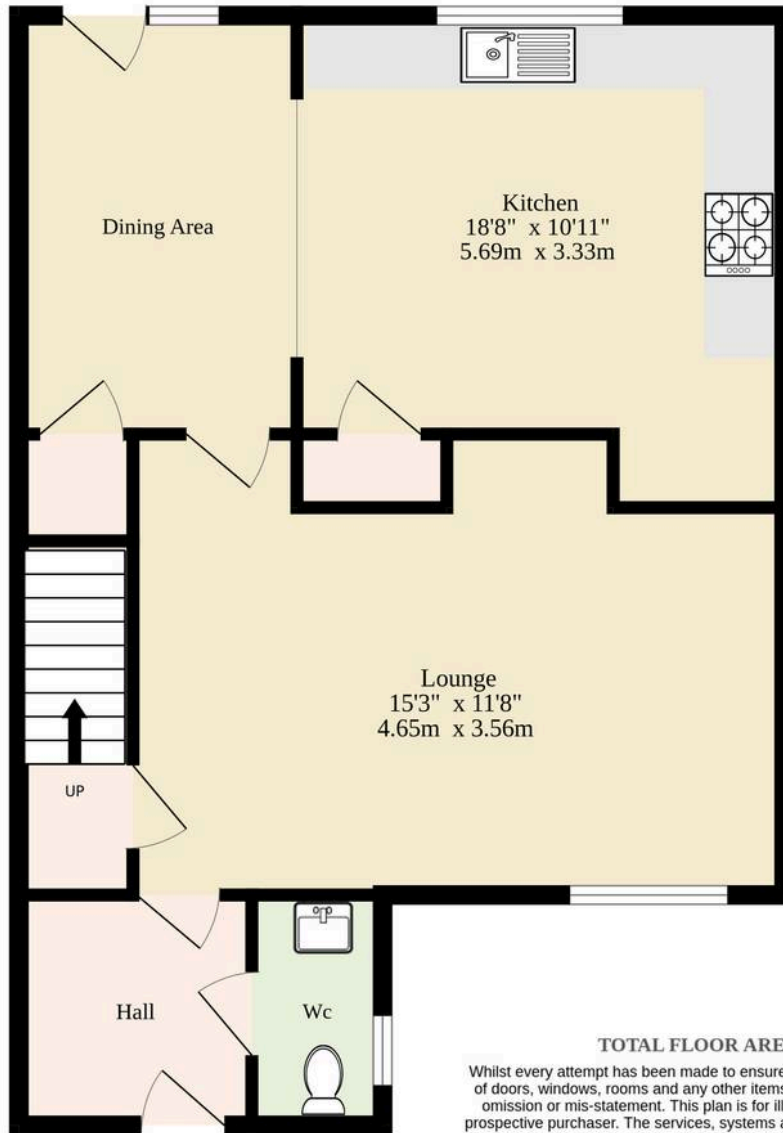
Sold Freehold.

Connected to all mains services.

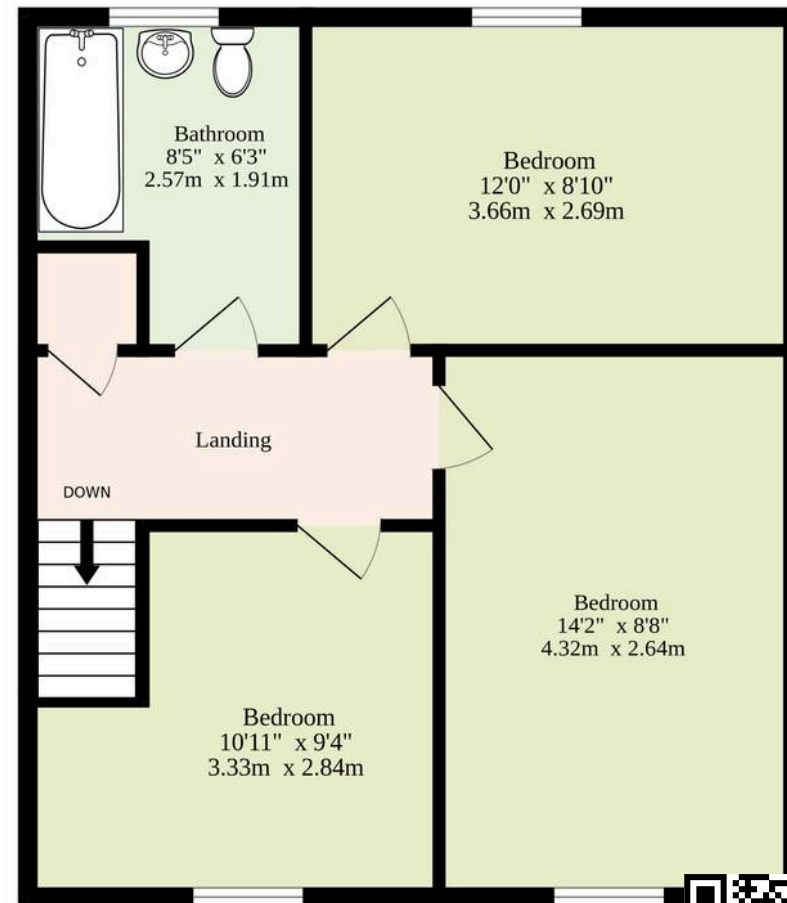
- Walking distance to local amenities making everyday tasks quick and convenient
- Useful WC located just off the entrance for added practicality
- Spacious sitting room with plenty of room for your chosen furnishings and decor
- Three well-sized bedrooms providing versatile options for a family or couples
- Three-piece bathroom suite designed to meet daily self-care needs
- Low-maintenance rear garden fully laid with patio for easy outdoor enjoyment
- Off-road parking at the front ensuring secure and accessible vehicle space



Ground Floor
482 sq.ft. (44.8 sq.m.) approx.



1st Floor
425 sq.ft. (39.5 sq.m.) approx.



TOTAL FLOOR AREA : 907 sq.ft. (84.3 sq.m.) approx.

Whilst every attempt has been made to ensure the accuracy of the floorplan contained here, measurements of doors, windows, rooms and any other items are approximate and no responsibility is taken for any error, omission or mis-statement. This plan is for illustrative purposes only and should be used as such by any prospective purchaser. The services, systems and appliances shown have not been tested and no guarantee as to their operability or efficiency can be given.

Made with Metropix ©2025

