



Flat 31 The Spectrum Building, East Road, London, N1 6FB

£750 Per Week

- Balcony
- Close to public transport

Flat 31 The Spectrum Building, London N1 6FB

Short Tenancy

This property is available for a short tenancy of 3 months only.

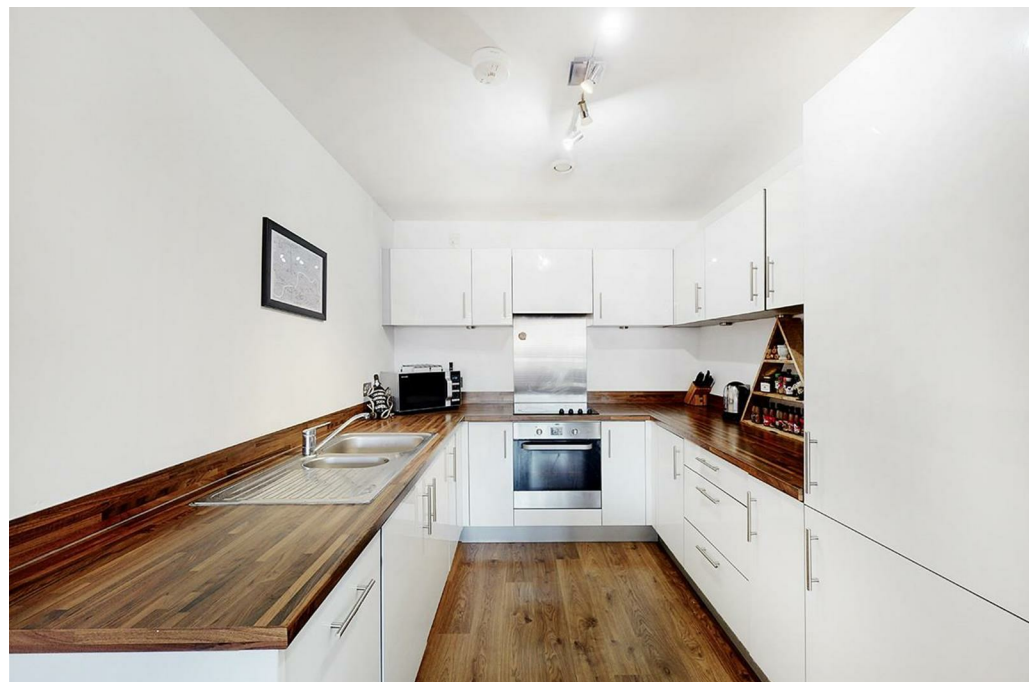
Property Description

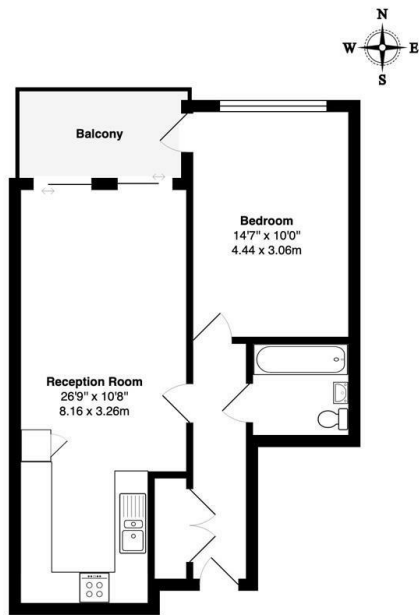
Alwyne Estates are pleased to present this spacious and beautifully appointed one-bedroom apartment, situated within a modern purpose-built block.

The property is incredibly bright throughout and features a private balcony leading off the reception room and a fully integrated kitchen. It includes a contemporary bathroom and a generously sized double bedroom with built-in wardrobes and large windows. Additionally, the apartment is equipped with underfloor heating throughout.



Council Tax Band:



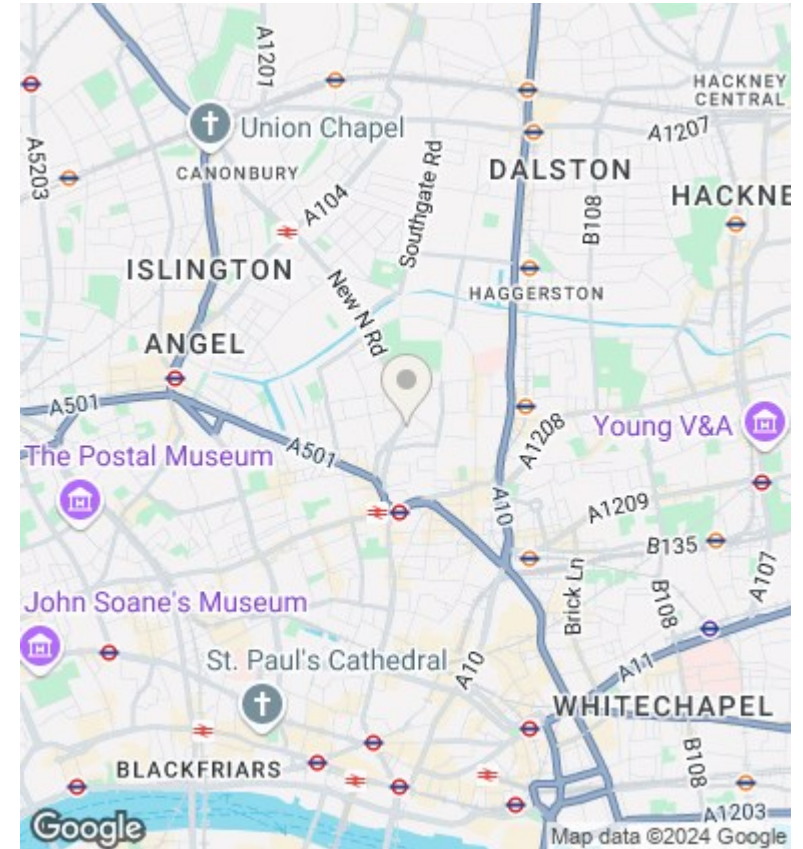


First Floor

The Spectrum Building, East Road, N1

Total Gross Area: 536 ft² ... 49.8 m² (excluding balcony)

All measurements are approximate and for identification guideline purposes only, not to scale.
Compliant with the RICS code of measuring practice



Directions

Viewings

Viewings by arrangement only. Call 02073593191 to make an appointment.

Council Tax Band

Energy Efficiency Rating		
	Current	Potential
Very energy efficient - lower running costs		
(92 plus) A		
(81-91) B	82	82
(69-80) C		
(55-68) D		
(39-54) E		
(21-38) F		
(1-20) G		
Not energy efficient - higher running costs		
England & Wales	EU Directive 2002/91/EC	

Full description

AlwyneEstatesarepleasedtopresentthisfantasticsizedonebedroomapartment,se





