



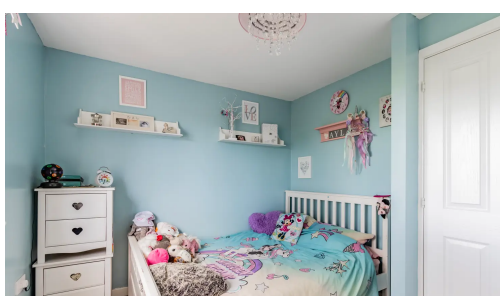
25 Brick Kiln Close, Martham

£250,000 Freehold

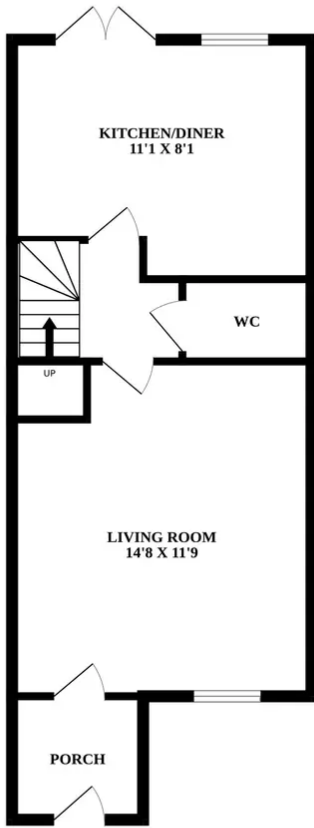
Immaculate 3-bed semi-detached family home in sought-after Martham. Spacious and contemporary with inviting living room, well-appointed kitchen, stylish bathroom, generous bedrooms, master with en-suite. Low-maintenance garden, off-road parking, beautiful field views. Don't miss out!

Council Tax band: B

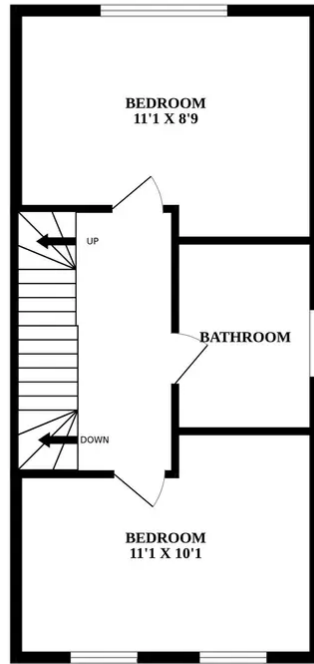
Nestled within the charming village of Martham, Brick Kiln Close offers a delightful residential setting in the heart of Norfolk. This tranquil locale is characterized by its picturesque surroundings and a welcoming community atmosphere. The village, with its historic charm and local amenities, provides residents with a serene retreat while maintaining easy access to essentials. Brick Kiln Close is conveniently located near shops, schools, and leisure facilities, ensuring a well-rounded and convenient lifestyle. The property serves as an ideal haven for those seeking a peaceful living experience in a quaint village setting, where the timeless appeal of Norfolk's countryside meets the comfort of modern amenities.



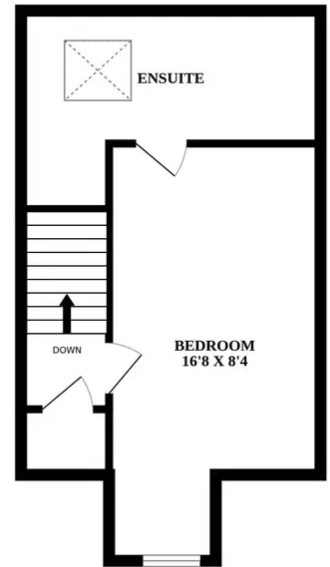
GROUND FLOOR



1ST FLOOR



2ND FLOOR



Whilst every attempt has been made to ensure the accuracy of the floorplan contained here, measurements of doors, windows, rooms and any other items are approximate and no responsibility is taken for any error, omission or mis-statement. This plan is for illustrative purposes only and should be used as such by any prospective purchaser. The services, systems and appliances shown have not been tested and no guarantee as to their operability or efficiency can be given.
Made with Metropix ©2023

We are delighted to present this immaculately presented 3 bedroom semi-detached family home, situated in the sought-after location of Martham, NR29. Offering spacious and contemporary accommodation, this property is ideal for those looking for a stylish and comfortable living space.

Upon entering through the entrance porch, you are welcomed into the inviting living room, perfect for relaxation and entertaining guests. The living room boasts ample natural light and provides a warm and inviting atmosphere.

Further down the hall boasts a convenient WC, ideal for guests, as well as a well-appointed kitchen that is sure to delight. The kitchen offers plenty of storage space and modern appliances, making it a joy to cook and entertain in.

Heading upstairs, you will find two generously sized double bedrooms, both of which are tastefully decorated and flooded with natural light. The bedrooms provide ample space for furniture and offer a peaceful retreat after a long day.

Also located on the first floor is a stylish bathroom, fitted with high-quality fixtures and finishes. This bathroom offers a tranquil space to unwind in, complete with a bathtub, perfect for indulging in a relaxing soak or quick refreshing shower.

Continuing upstairs to the second floor, you will discover the master bedroom. This spacious bedroom boasts an en-suite bathroom, enhancing the privacy and convenience of the owners. The en-suite is complete with modern fittings and a shower, providing a luxurious and convenient addition to this already impressive property.

Externally, the property features a low-maintenance rear garden, perfect for outdoor dining or entertaining. The garden provides a peaceful and private space to enjoy the fresh air and beautiful surroundings.

Further benefits include ample off-road parking, ensuring convenience and ease of access for both residents and visitors alike. Additionally, this property boasts beautiful field views, adding a touch of tranquillity and natural beauty to the location.

Overall, this property offers a fantastic opportunity to own a stylish and contemporary family home in a sought-after location.

With its versatile living spaces, generous bedrooms, and modern finishes throughout, this property is sure to capture your attention. Do not miss out on the chance to own this stunning home - contact us today to arrange a viewing and secure your future in this delightful property.

