



Spring Grove, London, W4 3NH

Guide Price £899,950

WHITMAN & CO.

SALES · LETTINGS · COMMERCIAL

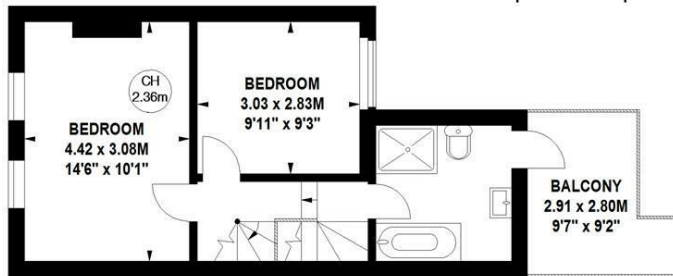
- Private 38' south facing garden
- Beautifully presented
- Fantastic transport links
- Sunny roof terrace
- Close to the river
- No chain

Tenure - Freehold
Local Authority - Hounslow
Council Tax - Band F

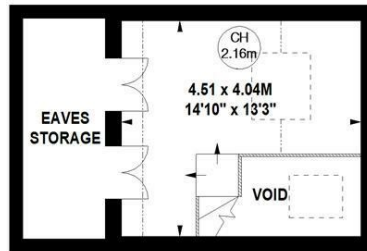
Spring Grove, W4

Approximate gross internal area
102.93 sq m / 1108 sq ft
(Including Eaves Storage & Void)
Approximate eaves storage area
6.41 sq m / 69 sq ft

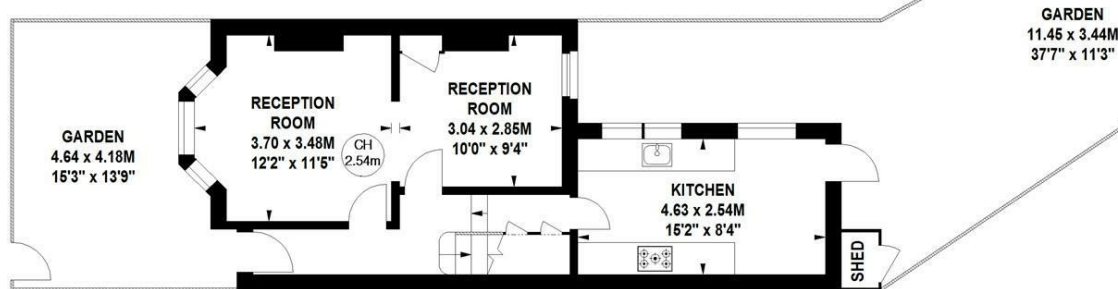
Key :
CH - Ceiling Height



First Floor



Second Floor



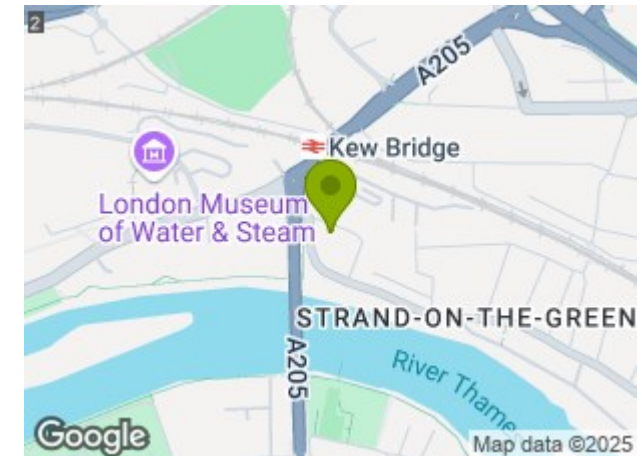
Ground Floor

Not to scale, for guidance only and must not be relied upon as a statement of fact.
All measurements and areas are approximate only

THE PROPERTY

A well-presented Victorian cottage, ideally located in the historic Strand on the Green, featuring a private 38-ft south-facing garden and a roof terrace. The property includes two double bedrooms, a staircase leading to a loft room, a luxury bathroom, a double reception room, and a fully integrated kitchen, all complemented by a host of original features. Situated on a sought-after residential street, it offers close proximity to Kew Bridge Station, local bus routes, Gunnersbury Station, and an array of local shops, bars, and restaurants. No chain.

SITUATION



5-7 Turnham Green Terrace, Chiswick, London, W4 1RG

Tel 020 8747 8800

E-mail sales@whitmanandco.com

Website www.whitmanandco.com