

Symonds  
& Sampson



19 Peverell Avenue West

Poundbury, Dorchester, Dorset



# 19 Peverell Avenue West

Poundbury  
Dorchester  
Dorset DT1 3SU

A well proportioned and beautifully presented town house with south facing garden and double garage conveniently situated close to Queen Mother Square.



- Three storey townhouse
- Conveniently situated close to Queen Mother Square
  - Four bedrooms
  - Open plan kitchen/dining room
- Spacious first floor double aspect sitting room
  - Two shower rooms and family bathroom
- Delightful south facing easily maintained enclosed garden
  - Double garage

Guide Price £595,000

Freehold

Poundbury Sales  
01305 251154  
[poundbury@symondsandsampson.co.uk](mailto:poundbury@symondsandsampson.co.uk)



## THE PROPERTY

A spacious and well appointed three storey town house conveniently situated in Poundbury within a short walking distance of Queen Mother Square. Built by Morrish Homes in 2007 with attractive rendered elevations under a slate roof, offering versatile accommodation which has been subject to considerable refurbishment by the current owners including fitted window shutters, new Harvey Maria flooring to the ground floor and newly fitted carpets throughout.

## ACCOMMODATION

On the ground floor, a welcoming reception hall leads to a ground floor shower room and bedroom/study with rear aspect stable door and cupboard housing the gas boiler. The open plan kitchen/dining room offers an abundance of natural light with a double aspect and full length windows and door opening to the rear, south facing garden. The kitchen is well appointed with wall and floor cupboards with granite worksurfaces, integrated fridge and freezer, dishwasher and washing machine with a built in double electric oven and 4 ring gas hob.

On the first floor, stairs lead to the second floor accommodation together with access to a double bedroom to the rear and delightful double aspect sitting room with living flame gas fire and light oak hard wood flooring. On the second floor landing is a useful linen cupboard, airing cupboard with pressurised water cylinder, hatch to loft, well appointed family bathroom and doors to two double bedrooms, both with built in wardrobes. The main bedroom has a new/modern en-suite shower room.

## OUTSIDE

A small front garden with slate border, enclosed by wrought iron railings. The rear garden enjoys a favoured south facing aspect and designed for ease of maintenance, mainly being paved with gravelled borders, and garden shed. Steps lead down to a covered walkway with pedestrian rear access and side door leading to a spacious double garage with twin electrically operated doors.

## SITUATION

The property is situated in a convenient location close to the stylish Butter Market and also within walking distance of Queen Mother Square, which provides a good range of amenities including Waitrose, butchers, gallery, coffee houses, restaurant and garden centre. Across the Poundbury development there are a variety of boutiques, a veterinary practice, dentist surgery and doctor's surgery along with a number of specialist outlets.

Dorchester town centre is situated approximately 1½ miles away and offers a comprehensive range of shopping and recreational facilities including a leisure centre, library and cinema. It is in the catchment area of a number of highly regarded schools such as the Prince of Wales First School, Dorchester Middle School and the Thomas Hardy School. There are numerous sports clubs around the town including cricket, rugby, football, tennis and golf clubs. The town also boasts mainline rail links to both London Waterloo and Bristol Temple Meads. The A35 gives access to Poole and Bournemouth and the cross channel ferries at Poole. There is a regular bus service from Poundbury to Dorchester with connections to surrounding towns and villages.

The Jurassic Coastline is a few miles to the south with some sandy beaches and water sports along the coast of Weymouth/Portland.

## DIRECTIONS

What3words:///invents.imprints.dame

## SERVICES

Mains gas, electric, water and drainage. Gas central heating system

Broadband- Ultrafast broadband is available  
Mobile phone coverage- Network coverage is reported to be excellent both indoors and out  
(Information from <https://www.ofcom.org.uk>)

## MATERIAL INFORMATION

Local Authority

Dorset Council Tel: 01305 251010

Council tax band E  
EPC C

Manco Charge 3: We are advised that there is a sum of £192.00 pa payable to the Poundbury Estate Company.





# Peverell Avenue West, Poundbury, Dorchester

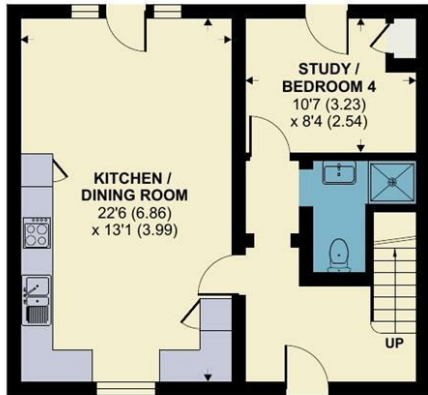
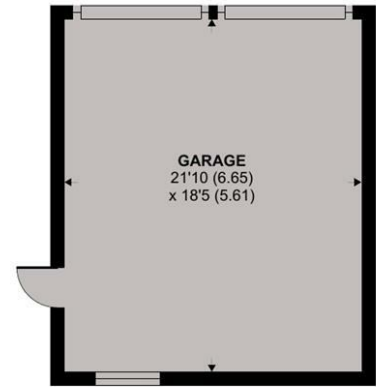
Approximate Area = 1653 sq ft / 153.5 sq m

Garage = 402 sq ft / 37.3 sq m

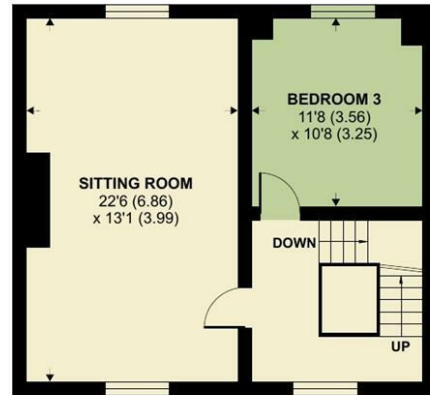
Total = 2055 sq ft / 190.8 sq m

For identification only - Not to scale

Energy Efficiency Rating		
Energy efficient - lower rating costs	Current	Best
A		
B		
C		
D		
E		
F		
G		
Energy efficient - higher rating costs		
England & Wales		
2020/11/15		



GROUND FLOOR



FIRST FLOOR



SECOND FLOOR



Floor plan produced in accordance with RICS Property Measurement Standards incorporating International Property Measurement Standards (IPMS2 Residential). © nclhcom 2023. Produced for Symonds & Sampson. REF: 1032045



Poundbury/DW/15.01.25



01305 251154

poundbury@symondsandsampson.co.uk  
Symonds & Sampson LLP  
Arch Point House, 7 Queen Mother Square,  
Poundbury, Dorset DT1 3BY



Important Notice: Symonds & Sampson LLP and their Clients give notice that: 1. They have no authority to make or give any representations or warranties in relation to the property. These particulars do not form part of any offer or contract and must not be relied upon as statements or representations of fact. 2. Any areas, measurements or distances are approximate. The text, photographs and plans are for guidance only and are not necessarily comprehensive. It should not be assumed that the properties have all necessary planning, building regulation or other consents and Symonds and Sampson LLP have not tested any services, equipment or facilities. 3. We have not made any investigation into the existence or otherwise of any issues concerning pollution of the land, air or water contamination and the purchaser is responsible for making his/her own enquiries in this regard. 4. The property is sold subject to and with the benefit of all existing wayleaves, easements and rights of way whether public or private, specifically mentioned or not. The vendors shall not be required to define any such rights, privileges or advantages.

SALES | LETTINGS | AUCTIONS | FARMS & LAND | COMMERCIAL | NEW HOMES | PLANNING & DEVELOPMENT