

# roundtree

real estate



Dartmouth Road NW2

£975,000



3



2



Y

FREEHOLD



BRITISH  
PROPERTY  
AWARDS

2022

★★★★★

GOLD WINNER

ESTATE AGENT  
IN NW4



BRITISH  
PROPERTY  
AWARDS

2022 - 2023

★★★★★

GOLD WINNER

LETTING AGENT  
IN NW4

*A fresh approach to your property journey...*



Beautifully presented three double bedroom two bathroom (One Ensuite) garden maisonette set within the highly desirable Mapesbury Conservation Area equidistant to Kilburn and Willesden Green tube stations (Jubilee Line, Zone 2). This huge apartment has been well kept with a newly fitted kitchen, spacious reception room and direct access to a large well-tended private garden.



- Three Double Bedrooms
- Two Bathrooms (One Ensuite)
- Spacious Living room/Dining Room
- Separate fitted kitchen
- Good size Private Rear Garden
- Off street parking
- Close to Transport Links
- Including the freehold of the block

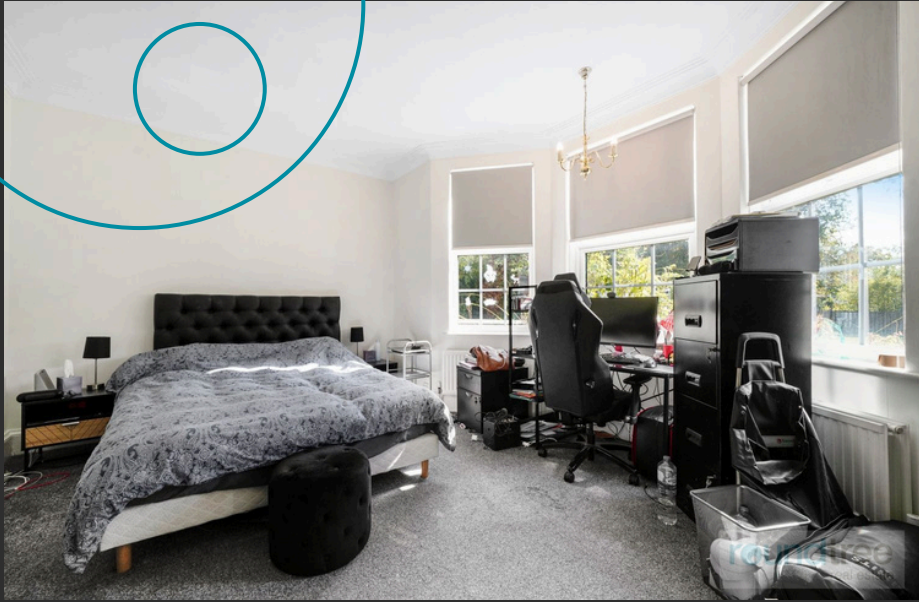






**Further benefits include high ceilings, ample storage space throughout and off-street parking for one car. The property is being sold with the freehold that also includes, Flat B & Flat C both sold on long leaseholds, that run for 125 years from June 1997 with approx. 98 years to expiry, and with current ground rent of £200 per annum for each flat, increasing each 25 years by £100 to a maximum of £500 per annum.**





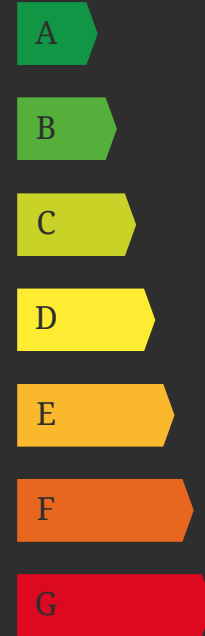
**Chain Free. Sole Agent.**

*A fresh approach to your property journey...*

## FLOOR PLAN



## EPC



E

1 Sentinel Square, Brent Street  
Hendon, NW4 2EL

020 8203 21111

mail@theroundtree.com

theroundtree.com

### Selling your home?

If you are considering selling your home please contact us today for your no obligation free market appraisal.

Our dedicated and friendly team will assist you.

Get in touch today!



General: While we endeavor to make our sales particulars fair, accurate and reliable, they are only a general guide to the property and, accordingly, if there is any point which is of particular importance to you, please contact the office and we will be pleased to check the position for you, especially if you are contemplating travelling some distance to view the property. Measurements: These approximate room sizes are only intended as general guidance. You must verify the dimensions carefully before ordering carpets or any built-in furniture. Services: Please note we have not tested the services or any of the equipment or appliances in this property, accordingly we strongly advise prospective buyers to commission their own survey or service reports before finalizing their offer to purchase. THESE PARTICULARS ARE ISSUED IN GOOD FAITH BUT DO NOT CONSTITUTE REPRESENTATIONS OF FACT OR FORM PART OF ANY OFFER OR CONTRACT. THE MATTERS REFERRED TO IN THESE PARTICULARS SHOULD BE INDEPENDENTLY VERIFIED BY PROSPECTIVE BUYERS OR TENANTS. NEITHER ROUNDTREE NOR ANY OF ITS EMPLOYEES OR AGENTS HAS ANY AUTHORITY TO MAKE OR GIVE ANY REPRESENTATION OR WARRANTY WHATSOEVER IN RELATION TO THIS PROPERTY.

*A fresh approach to your property journey...*