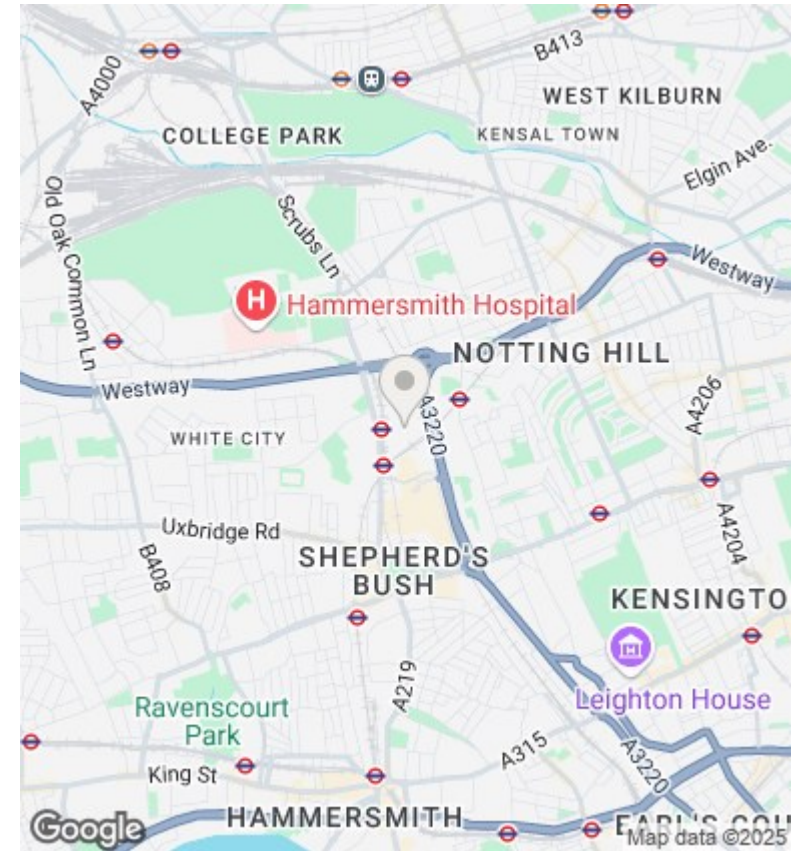
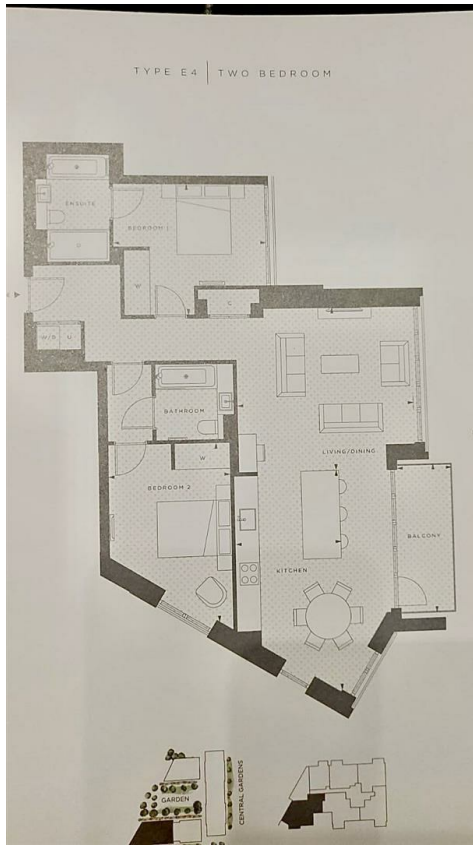




Lincoln Apartments, White City Living, W12 W12 7LG

£4,400 PCM

- Large Apartment with balcony
- Gym, spa and swimming pool
- Private balcony
- Floor to ceiling windows
- 5 mins to Wood Lane Tube Station
- 24 Hour Concierge
- Communal gardens
- 10 mins to Shepard's Bush Station
- 24 Hour Security



Viewings

Viewings by arrangement only.
Call 02077225022 to make an appointment.

Council Tax Band

F

EPC Rating:

| Energy Efficiency Rating | | |
|--|----------------------------|-----------|
| | Current | Potential |
| <i>Very energy efficient - lower running costs</i> | | |
| (92 plus) A | | |
| (81-91) B | | |
| (69-80) C | | |
| (55-68) D | | |
| (39-54) E | | |
| (21-38) F | | |
| (1-20) G | | |
| <i>Not energy efficient - higher running costs</i> | | |
| England & Wales | EU Directive 2002/91/EC | |