



CHASE APARTMENTS
LONDON



Hepworth Court, Grosvenor Waterside, 32 Gatliff Road SW1W 8QN

Asking Price £1,000,000

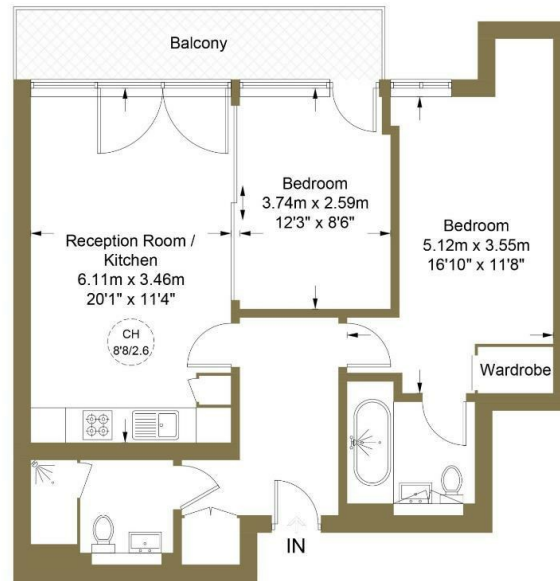
- 24 Hour Concierge
- Riverside Development
- Walking distance to Sloane Square
- On site Grocery store
- Underground Parking
- 24 Hour Security
- Walking distance to Victoria
- Gym/Spa
- Balcony
- On Site cafe

Grosvenor Waterside, 32 Gatliff Road, Belgravia, London, SW1W 8QN
02077225022

<http://www.chaseapartments.com/>

Hepworth Court, SW1W

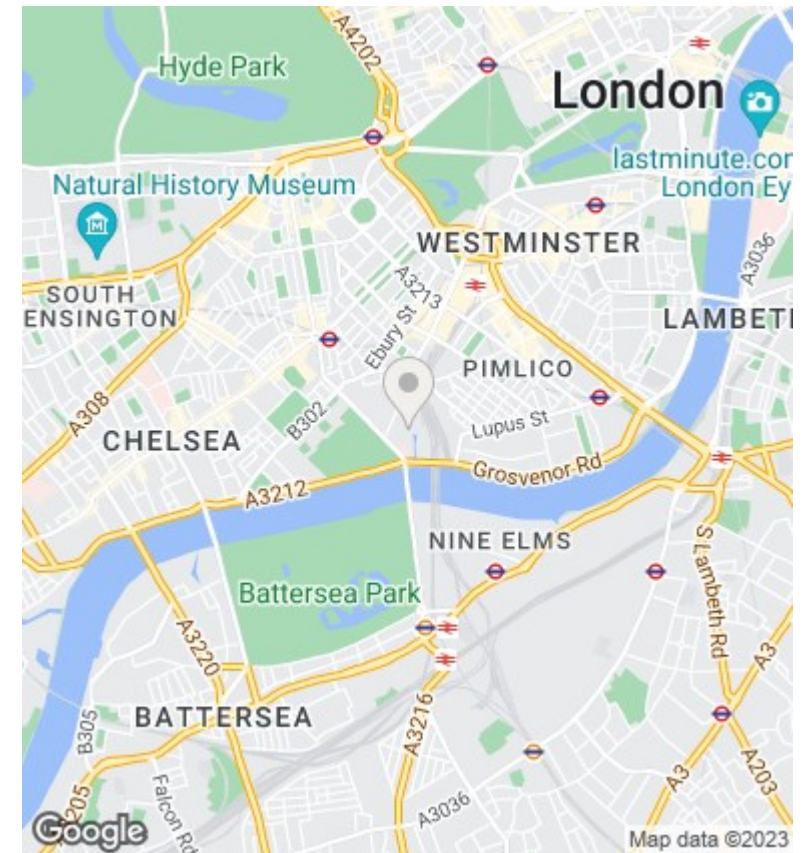
Approximate Gross Internal Area = 66.3 sq m / 714 sq ft



Second Floor



This plan is for layout guidance only. Not drawn to scale unless stated. Windows and door openings are approximate. Whilst every care is taken in the preparation of this plan, please check all dimensions, shapes and compass bearings before making any decisions reliant upon them. (ID979319)



Viewings

Viewings by arrangement only.
Call 02077225022 to make an appointment.

Council Tax Band

EPC Rating:

Energy Efficiency Rating		
	Current	Potential
Very energy efficient - lower running costs		
(92 plus) A		
(81-91) B		
(69-80) C		
(55-68) D		
(39-54) E		
(21-38) F		
(1-20) G		
Not energy efficient - higher running costs		
England & Wales	EU Directive 2002/91/EC	