

## 28 The Street, Bridgham

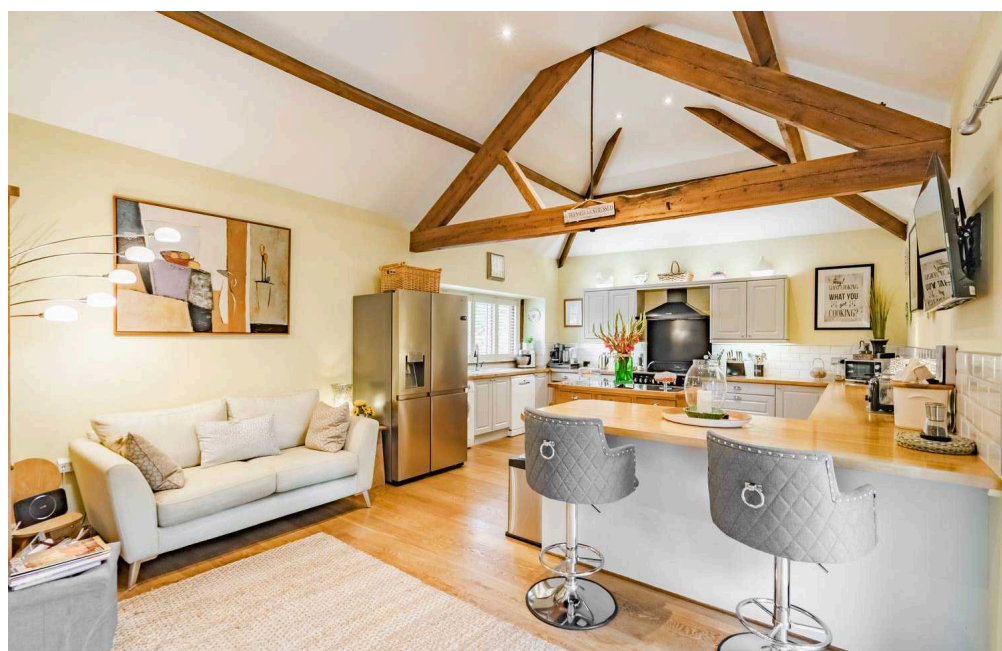
£575,000 Freehold

\*Guide Price £575,000 - £600,000 \* Discover a stunning barn conversion, all set against the picturesque backdrop of a historic church. Upon entry, you are welcomed by a stylish lobby that leads to three generous reception rooms, each featuring high ceilings, exposed beams and inviting log burners. The bright open-plan kitchen/breakfast room is designed for both functionality and style, with patio doors that open to a lovely garden terrace beneath an overhead pergola. Upstairs, four spacious bedrooms provide quiet settings, including a master suite with an ensuite shower rooms. The meticulously landscaped garden, complete with a manicured lawn and vibrant flowers, enhances the allure of this exquisite property.

\*Guide Price £575,000 - £600,000 \* Discover a stunning barn conversion, all set against the picturesque backdrop of a historic church. Upon entry, you are welcomed by a stylish lobby that leads to three generous reception rooms, each featuring high ceilings, exposed beams and inviting log burners. The bright open-plan kitchen/breakfast room is designed for both functionality and style, with patio doors that open to a lovely garden terrace beneath an overhead pergola. Upstairs, four spacious bedrooms provide quiet settings, including a master suite with an ensuite shower rooms. The meticulously landscaped garden, complete with a manicured lawn and vibrant flowers, enhances the allure of this exquisite property.

### The Location

Bridgham is a charming Breckland village nestled in the picturesque county of Norfolk. With its strong sense of community, the village offers an array of beautiful countryside walks, including great woodland trails that invite exploration. Residents can enjoy the local village church and a variety of



\*Guide Price £575,000 - £600,000 \* Discover a stunning barn conversion, all set against the picturesque backdrop of a historic church. Upon entry, you are welcomed by a stylish lobby that leads to three generous reception rooms, each featuring high ceilings, exposed beams and inviting log burners. The bright open-plan kitchen/breakfast room is designed for both functionality and style, with patio doors that open to a lovely garden terrace beneath an overhead pergola. Upstairs, four spacious bedrooms provide quiet settings, including a master suite



\*Guide Price £575,000 - £600,000 \* Discover a stunning barn conversion, all set against the picturesque backdrop of a historic church. Upon entry, you are welcomed by a stylish lobby that leads to three generous reception rooms, each featuring high ceilings, exposed beams and inviting log burners. The bright open-plan kitchen/breakfast room is designed for both functionality and style, with patio doors that open to a lovely garden terrace beneath an overhead pergola. Upstairs, four spacious bedrooms provide quiet settings, including a master suite with an ensuite shower rooms. The meticulously landscaped garden, complete with a manicured lawn and vibrant flowers, enhances the allure of this exquisite property.

### **The Location**

Bridgham is a charming Breckland village nestled in the picturesque county of Norfolk. With its strong sense of community, the village offers an array of beautiful countryside walks, including great woodland trails that invite exploration. Residents can enjoy the local village church and a variety of amenities within easy reach. Situated alongside the River Thet to the south, Bridgham is conveniently located just 7 miles southwest of Thetford and 2 miles east of East Harling, both of which provide essential services for this close-knit community. Experience village life at its finest in this idyllic setting.

### **The Street**

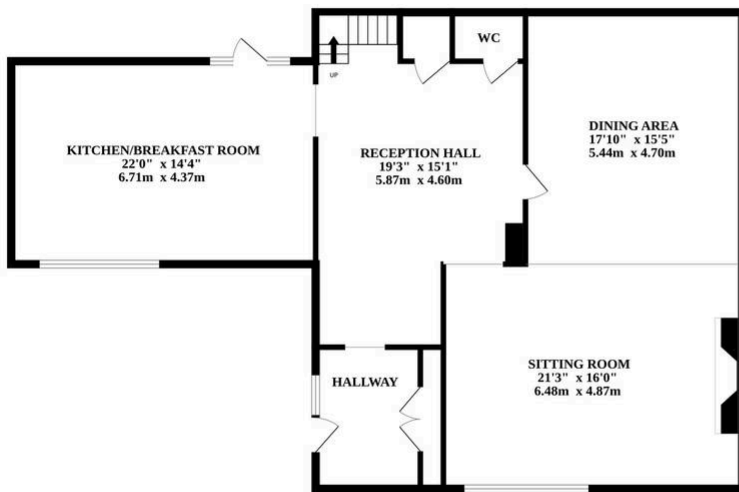
Boasting a stunning barn conversion that has been tastefully decorated to enhance its original features, providing a versatile living space that is sure to captivate all who enter. Upon stepping into the property, you are greeted by an entrance lobby with convenient built-in storage, leading to a reception area that sets the tone for the entire home. The property boasts three generously sized reception rooms, each exuding character with high ceilings, exposed beams and log burner, creating warm and inviting spaces for relaxation and entertainment.

The bright and airy open plan kitchen/breakfast room offers ample space for appliances, a range cooker and patio doors that lead out to a pergola within the garden. The property's versatile layout caters to the needs of various lifestyles, ensuring functionality for all residents.

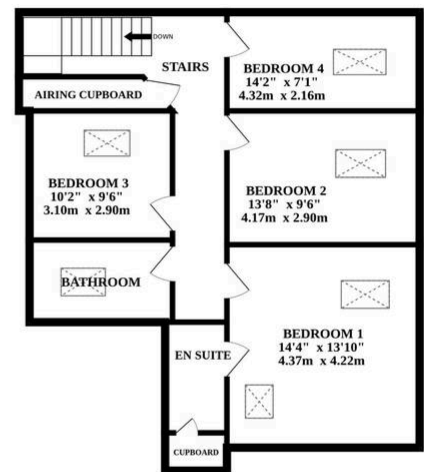
Situated alongside a picturesque church, the property enjoys stunning, unobstructed views, providing a serene and private setting for those seeking a quiet lifestyle. The village location offers a strong sense of community and easy access



GROUND FLOOR



1ST FLOOR



Whilst every attempt has been made to ensure the accuracy of the floorplan contained here, measurements of doors, windows, rooms and any other items are approximate and no responsibility is taken for any error, omission or mis-statement. This plan is for illustrative purposes only and should be used as such by any prospective purchaser. The services, systems and appliances shown have not been tested and no guarantee as to their operability or efficiency can be given.  
 Made with Metropix ©2024

You can include any text here. The text can be modified upon generating your brochure.

You can include any text here. The text can be modified upon generating your brochure.

