



52 Crossdale Street, Northrepps - NR27 9LB

£350,000

EPC Energy Efficiency Rating: D

EPC Environmental Impact Rating: E

GUIDE PRICE £350,000-£375,000 Experience the perfect blend of tranquility and cosy comfort in this delightful Northrepps cottage. The ground floor offers a spacious living area with a wood burner, an open-plan kitchen area leading to a bright conservatory and a versatile third bedroom with an ensuite shower room. Upstairs, two additional bedrooms provide unique potential, making this home flexible to your needs. The garden is full of quirks and charm, with multiple levels, lawned areas and mature plants, offering a serene outdoor oasis. With ample off-road parking at the front, this cottage is the ideal retreat for a peaceful and comfortable lifestyle.



GUIDE PRICE £350,000-£375,000 Experience the perfect blend of tranquility and cosy comfort in this delightful Northrepps cottage. The ground floor offers a spacious living area with a wood burner, an open-plan kitchen area leading to a bright conservatory and a versatile third bedroom with an ensuite shower room. Upstairs, two additional bedrooms provide unique potential, making this home flexible to your needs. The garden is full of quirks and charm, with multiple levels, lawned areas and mature plants, offering a serene outdoor oasis. With ample off-road parking at the front, this cottage is the



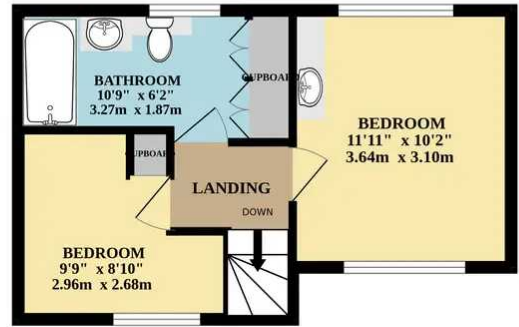
GUIDE PRICE £350,000-£375,000 Experience the perfect blend of tranquility and cosy comfort in this delightful Northrepps cottage. The ground floor offers a spacious living area with a wood burner, an open-plan kitchen area leading to a bright conservatory and a versatile third bedroom with an ensuite shower room. Upstairs, two additional bedrooms provide unique potential, making this home flexible to your needs. The garden is full of quirks and charm, with multiple levels, lawned areas and mature plants, offering a serene outdoor oasis. With ample off-road parking at the front, this cottage is the ideal retreat for a peaceful and comfortable lifestyle.



GROUND FLOOR



1ST FLOOR



Whilst every attempt has been made to ensure the accuracy of the floorplan contained here, measurements of doors, windows, rooms and any other items are approximate and no responsibility is taken for any error, omission or mis-statement. This plan is for illustrative purposes only and should be used as such by any prospective purchaser. The services, systems and appliances shown have not been tested and no guarantee as to their operability or efficiency can be given.  
Made with Metropix ©2023

You can include any text here. The text can be modified upon generating your brochure.

You can include any text here. The text can be modified upon generating your brochure.

