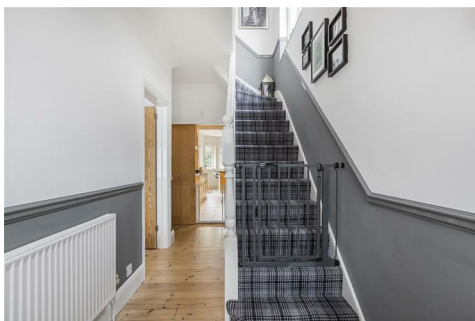




**Peter Barry**  
working harder for you

Tel: 020 8360 4777  
www.pbea.co.uk



## Faversham Avenue, Enfield,, EN1 2BU

Guide Price £675,000 to £685,000

Peter Barry are proud to offer this fantastic family home located on the sought after side of Enfield. Featuring three generously sized bedrooms, a bright and airy through lounge with hardwood flooring, bay windows, fitted cabinets, and a feature fireplace. The modern fitted kitchen includes a breakfast bar, while built-in wardrobes provide ample storage.

A stairway window enhances natural light, and the spacious garden with decking is ideal for outdoor relaxation. The property also benefits from a well-sized garage.

Positioned within the catchment area for outstanding schools and close to local amenities and transport links, this property is ideal for families and commuters.

Call our Sales Team today to arrange a viewing at your convenience.

Tel: 0208 360 4777

**£675,000**

- Off street parking for 2 cars
- Guest cloakroom
- Semi detached
- Extended to the rear
- Double glazed & central heating
- Great size rear garden
- Bright and airy
- Good road & transport links
- 0.7 miles to the station
- Potential to further extend (STPP)



Energy Efficiency Rating		Current	Potential
<i>Very energy efficient - lower running costs</i>			
(92 plus) A			
(81-91) B			
(69-80) C			71
(55-68) D			
(39-54) E		40	
(21-38) F			
(1-20) G			
<i>Not energy efficient - higher running costs</i>			
<b>England &amp; Wales</b>		EU Directive 2002/91/EC 