



Hamlet Gardens, London, W6
Guide Price £995,000

WHITMAN & CO.
SALES · LETTINGS · COMMERCIAL



A spectacular interior designed split-level penthouse apartment set within this handsome red brick mansion block located a short walk from numerous amenities. The flat benefits from light and spacious rooms with clever design features like the Crittal glazed entrance hallway. The accommodation comprises a stunning 28'5 reception room with French doors leading to two small balconies, a bespoke kitchen with a large island which opens onto the reception room, three bedroom suites - all with fitted wardrobes and ensuite bathrooms, two WC's and eaves storage. Hamlet Gardens is ideally located close to Ravenscourt Park and the River along with the extensive shopping and restaurant facilities on both King Street and Chiswick High Road. Transport links include Stamford Brook and Ravenscourt Park tube stations, local bus routes and the A4/M4 for routes in and out of London. No onward chain.

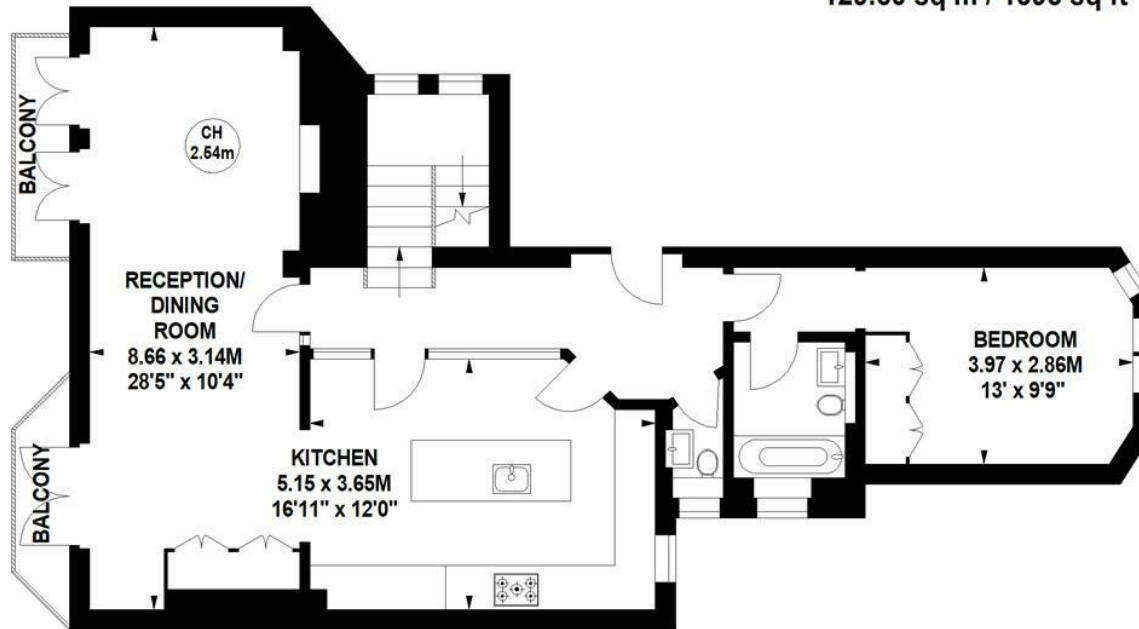


Hamlet Gardens, W6

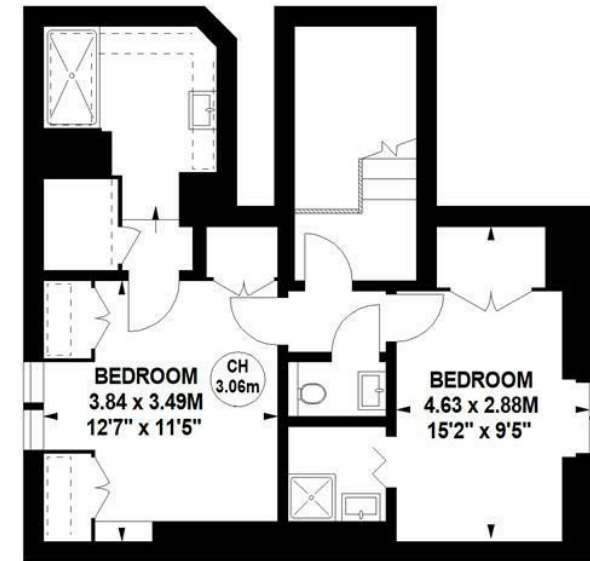
Approximate gross internal area

129.60 sq m / 1395 sq ft

Key :
CH - Ceiling Height



Third Floor



Fourth Floor

Not to scale, for guidance only and must not be relied upon as a statement of fact.
All measurements and areas are approximate only

- Split-level penthouse apartment
- Two small balconies
- Popular red brick mansion block

- 28'5 Reception room
- Three bed/three bath
- No onward chain

Tenure - Leasehold + Share of freehold
Lease length - 963 Years remaining
Ground Rent - Peppercorn
Service Charge - £7,182 pa
Local authority - Hammersmith and Fulham
Council tax - Band E

